

VTQs

A LEVELS



Walsall College

DISCOVER YOUR POTENTIAL

**SCHOOL LEAVERS'
COURSE GUIDE**

2025/2026

APPRENTICESHIPS

T LEVELS



Welcome

Welcome to Walsall College – one of the most successful colleges in the country.

We're dedicated to helping you develop skills and gain qualifications that employers are looking for. Whether it's higher education you're aiming for or getting your dream job, we're confident you will discover and reach your potential with us.

Joining us means becoming part of a college renowned for excellent teaching, state-of-the-art facilities and support services that bring out the best in you. With our range of Vocational Technical Qualifications (VTQs), T Levels, A Levels, and Apprenticeships, you'll find yourself on a pathway to success that suits you in every way.

Walsall College is not just a place to study. We are a welcoming, safe and supportive environment where every student belongs.

We work closely with hundreds of employers to provide real work experience and opportunities to showcase your talent and skills, giving you a competitive edge in job and university applications.

Outside the classroom, our Students' Union offers social activities and ways to give back to the community, so you'll make the most of your time here.

We look forward to being part of your journey and helping you achieve your goals.

Jatinder Sharma CBE DL -
Principal & Chief Executive

Image taken by Valerie Woolford for the Black Country Chamber of Commerce. Used with permission.

What's Inside



Welcome to Walsall College
Page 1-25



Achieving Together
Page 26-27



Automotive
Page 28-29



Aviation Operations, Travel & Tourism
Page 30-31



Business, Finance and Law
Page 32-39



Computing
Page 40-41



Construction Trades/Services
Page 42-57



Creative
Page 58-73



Early Years and Health & Social Care
Page 74-79



Engineering
Page 80-81



Hair, Barbering and Beauty
Page 82-85



Hospitality, Events and Cookery
Page 86-89



Protective Services
Page 90-91



Science
Page 92-93



Sports
Page 94-95



Supported Learning
Page 96-101

Did you know...

FREE BUS PASS

Available to full time students

*subject to eligibility



FREE Bus Pass



FANCY A CUPPA

We have an on-site Starbucks

ENGLISH & MATHS

are an important part of our study programmes



WiFi

FREE WI-FI ON CAMPUS



DISCOUNTED ACCESS TO OUR ON-SITE GYM



YOU CAN STUDY UP TO DEGREE LEVEL WITH US

Students get a

FREE BREAKFAST

Wisemore and Green Lane Campus 8am - 11am
Hawbush Campus 9am - 10:30am



98%
OF OUR STUDENTS
feel safe when in College

FE Teaching and Learning Survey 23/24

94%
OF OUR STUDENTS
would recommend us to others

FE Teaching and Learning Survey 23/24



▶▶▶
WE HAVE THE BIGGEST SIXTH FORM IN WALSALL

▶▶▶
CASHLESS Your ID card is a Smart Card. It can be pre-loaded with money to use at the College tills



We are one of the **LARGEST** PROVIDERS of 16-18 Apprenticeship Training in the West Midlands

WE WORK WITH OVER 700 APPRENTICE EMPLOYERS



COLLEGE BURSARIES AVAILABLE for equipment and childcare

*subject to eligibility

▶▶▶

Discover your path

Discover your potential with our wide range of courses. Most subjects are available in different pathways. Here's what you need to know about them:

Helping you to find the right route

It can be hard knowing which route or level is right for you. At Walsall College, we get rid of the guesswork so you'll know you're on the right path.

- You'll apply to study your chosen subject and be invited for an interview with one of our friendly tutors.
- They'll ask you about your ambitions and experience, then recommend which pathway will work best for you.
- You start your course with confidence, knowing you're on the right path to achieve your goals.

Maths and English are essential for success - both at work and in life. If you have already achieved grade 4s in these subjects, you will have chance to develop your knowledge as part of your course. If you haven't achieved grade 4s yet, we'll help to get you there.

▶▶▶

Vocational Technical Qualifications (VTQ)

What is a VTQ?

- A VTQ focuses on practical career skills and comes in different levels depending on your experience.
- Level 3 Extended Diplomas are equivalent to three A Levels.
- You'll gain real-world skills and get some work experience.
- You'll be assessed through practical sessions and coursework.

Ideal if...

- You want work-ready skills for a specific sector - like automotive or health.
- You learn best through hands-on experience.
- You love putting theory into practice.
- You want to progress to work or further study.

▶▶▶

T-LEVELS
THE NEXT LEVEL QUALIFICATION

What is a T Level?

- T Levels are courses that focus on one specific career path for two years.
- One T Level is equivalent to three A Levels.
- You spend 80% of your time studying and 20% of your time on an industry placement with an employer. Here you will gain experience working in your chosen industry.

Ideal if...

- You want to progress to work or further study.
- You know what career you want to do.
- You enjoy learning theories and ideas but want to get lots of practical hands-on work experience.

▶▶▶

Apprenticeships

What is an Apprenticeship?

- An Apprenticeship lets you learn while you earn.
- You spend six hours a week in the classroom and the rest in a sector/role of interest.
- You'll be assessed on your progress in both work and study.

Ideal if...

- You know what career you want to do.
- You want to learn on the job more than in the classroom but still want to support your work experience with professionals knowledge.
- You want to earn a wage while you study.

▶▶▶

Hybrid A Levels

What are hybrid A Levels?

- A Levels are courses that focus on a single subject for two years.
- Our A Level pathways are designed using complementary subjects to give you a broader understanding of industries.
- You'll be assessed with exams and some coursework.
- You'll get some work experience but will mostly study in the classroom.

Ideal if...

- You learn best through reading and studying.
- You're good at exams.
- You like theories and ideas.
- You want to study an academic subject at university.

Get ahead with work experience

Whatever you're studying, you'll get work experience to boost your career, confidence and credentials. You'll learn to apply your new knowledge and skills in a real-life work environment.

Why do work experience?



Real-life experience of your chosen career



Helps narrow down what you'd like to do



Boosts your CV with skills and experience



Gives you contacts in the workplace



Puts your theory into practice



Increases your confidence



What support will I get?

You'll get support to:

- Find and apply for work experience with our wide range of employer partners
- Support during your placement - to make sure it's going well
- Support after your placement - to help you apply what you've learned

Our work experience partners include





"We're committed to offering hands-on training and mentorship that will shape the future leaders of our industry."

Lee Gorton
Workshop Manager
The Trade Centre UK Wednesbury



Want to know more?
Scan the QR code

Working with parents

The support and encouragement you give your child at home can make a big difference to their success at college.

It's why we welcome you to really get involved in their education: encouraging them to attend college regularly and complete homework on time. You can also chat to us about their progress during parents' evenings.

In turn, we'll keep you updated about your child's behaviour, achievements and areas for improvement. Every student has a personal tutor responsible for their care, progress and success. They're always on hand to help them reach their full potential - and help with any difficulties.



Want to know more?
Scan the QR code

The college helped my child realise their dream. The teachers filled her with confidence and the belief that anything is possible.

Your support at College

During your studies, you'll be challenged in lots of good ways - learning and growing into the new you. But sometimes you might face things you need help with. When you do, we're here for you 100%.



▶▶▶

Careers guidance

Your dream job is closer than ever thanks to support from our award-winning Careers Guidance Team. Explore your higher education and employment options and get help in applying for part-time jobs.

▶▶▶

Support with money

If you're under 19, our courses are free. But if you're struggling with other costs - like travel, equipment and exams - you might be able to get financial help. Just talk to our Customer Service Team for advice.

▶▶▶

Somewhere to study

Not everyone has a quiet place to study at home. If you need room to think, our Learning Resources Centre has everything you need - thousands of books, magazines and digital resources, computers, study areas, and fantastic staff to help you find what you need.

▶▶▶

Free Counselling

If things are getting on top of you, you can get free personal counselling to talk things through. You can also chat with a Safeguarding and Wellbeing officer for help with social and personal issues.

Support for Special Educational Needs and/or Disabilities

We welcome students with a wide range of additional needs including autism spectrum disorder, physical disabilities, learning difficulties/specific learning difficulties and more.

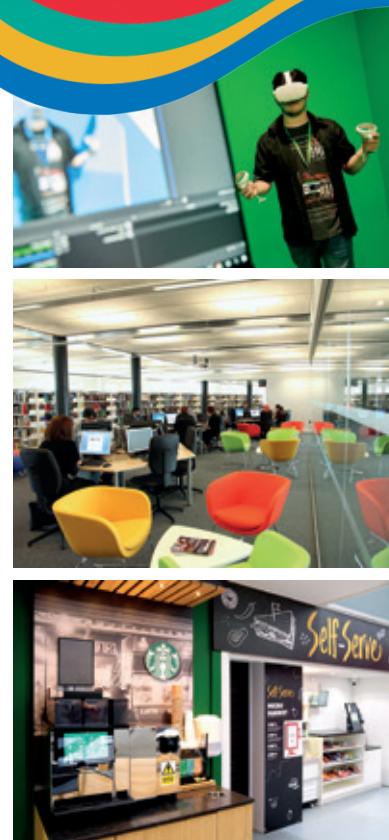
Want to know more?
Scan the QR code

Fantastic facilities, fantastic prospects

Step into our campuses for the first time and you'll be impressed. We've invested millions in our campuses to give you the very best equipment and facilities. How can we be so sure? Because we've worked with industry leaders - the very people who will want to employ you - to create them.

It's the perfect place to study. We have:

- Drop in learning decks that have all the latest technology
- Free wi-fi
- Free job search services
- Onsite award winning Littleton Restaurant
- Onsite nursery
- Music campus with recording studio and equipment
- Cisco Networking Academy/ Oracle Academy
- Bell Painting and Decorating Academy
- Theatre and dance space
- Hairdressing Salon and Barber Shop
- Digital Innovation Hub
- Beauty Therapy Spa including sauna, jacuzzi and steam room
- Workshops in: Brickwork, Engineering, Gas, Plumbing, Electrical, Plastering, Automotive including EV/Hybrid, Carpentry, and more
- Onsite gym
- Sports hall with badminton courts
- Sports training and injury clinic
- Conference/meeting rooms
- Dedicated Engineering Campus that includes: Solid Works and Autodesk suite, 3D printing technologies, CNC machines, pneumatic training rigs and more!



How to get here

Most of Walsall College’s campuses are just a short walk from Walsall’s main bus and train station which welcomes routes from all over the West Midlands and Staffordshire area. Choose to join us and you may even be eligible for a FREE Bus Pass*.

If you’re wondering how to get here

Wisemore Campus is just a few minutes walk from the railway station and central bus stops in Walsall town centre - and within walking distance of our Green Lane Campus, Digital Engineering Skills Centre, Broadway Campus and The Hub.

To reach our Hawbush Campus jump on bus 31 or 32 in Walsall which comes every few minutes and you will be onsite in 16 minutes. Our Inclusive Support Team can advise non-independent travellers and arrange disabled parking spaces.

Bike stands

There are bike stands available at all of our campuses.

Buses to Walsall

No.	From	36	Walsall to Alumwell to circular
4	Blackheath via West Bromwich	37	Willenhall via Lodge Farm Darlaston
4H	Hayley Green via Halesowen, Blackheath West Bromwich	39	Stowlawn via Bilston and Darlaston
4M	Merry Hill Shopping Centre via Blackheath West Bromwich	41	Willenhall via New Invention Bentley
6	Sutton Coldfield via Mere Green, Little Aston Aldridge	45	West Bromwich via Charlemont Farm, Stone Cross and Yew Tree
7	Walsall Wood via Aldridge	51	Birmingham - Walsall via Great Barr
8	Brownhills to via Clayhanger, Pelsall Lane and Rushall	69	Wolverhampton via New Cross Hospital Wood End New Invention Beechdale
9	Bloxwich via Pelsall, High Heath and Rushall	70	Bloxwich to Walsall Bus Station via Dudley Fields Beechdale
10	Brownhills via Streets Corner	70A	Walsall to Beechdale to Circular via Green Lane Sainsburys
11	Merry Hill to Dudley to Walsall via Powis Avenue Wood Green Road	77	Erdington via Streetly New Oscott, Sutton Coldfield
11A	Merry Hill to Dudley to Walsall via Gospel Oak Myvot	77A	Erdington via Streetly New Oscott Sutton Coldfield
19	Bloxwich via Blakenall Goscote	529	Wolverhampton via Willenhall
29	Bloxwich via Blakenall	X529	Wolverhampton
31	Mossley via Bloxwich	934	Birmingham via Kingstanding Pheasey
32	Lower Farm via Bloxwich	935	Birmingham via Kingstanding Streetly
34	Bilston via Darlaston	997	Birmingham via Perry Barr Old Oscott Pheasey Aldridge
35	Aldridge (via Rushall)	X51	Cannock to Birmingham via Walsall Great Barr

Trains to Walsall

Direct trains are available from the following stations: Birmingham New Street, Tame Bridge Parkway, Bloxwich, Bloxwich North, Landywood, Cannock, Hednesford, Rugeley Town, Rugeley Trent Valley, Wolverhampton, Coseley, Tipton, Dudley Port, Sandwell & Dudley, Smethwick Galton Bridge, Smethwick Rolfe Street, Duddeston, Aston, Witton, Perry Barr, Hamstead.

1

Wisemore Campus

Littleton St West, WS2 8ES

This campus includes fully-fitted areas for the study of business, creative arts, health, protective services and computing. There is also a performance area, a hair and beauty training salon and a nursery.

2

Broadway Campus

Littleton St West, WS2 8ES

An exclusive space just for music students and set in a listed building with its own grounds, students have access to state of the art instruments to enable them to perfect their musical talents.

3

The Hub

Littleton St West, WS2 8ES

Whether you need a great restaurant to meet up with friends, a gym and fitness classes, a meeting space, business start-up advice or business training, The Hub is open to students and the general public.

Key

- Pedestrian area
- Max stay 4 hours parking
- Max stay all day parking
- St. Paul's Bus Station



4

Green Lane Campus

Long Acre St, WS2 8HX

This campus is the centre for construction trades/ services. Modelled on industry standards, the centre has simulated workshop areas for trades, including painting and decorating, brickwork and carpentry.

5

Digital Engineering Skills Centre

Littleton St West, WS2 8ES

Our Digital Engineering Skills Centre (DESC) includes a range of revolutionary equipment for the engineering and advanced construction industries, including our Light Electric and Alternative Fuel (LEAF) Vehicle Training Centre.

Come and visit us at Walsall College

Scan the QR code



Join the Students' Union



Our Students' Union offers many ways to enjoy yourself, enrich your CV and improve your chances of landing that dream job.

Make friends

The induction and Freshers Fair both take place in September and are a great chance to make friends and find out what we've got to offer. The Student Lounge offers games consoles, pool tables, table tennis, and PCs - it's your place to relax and enjoy your free time.

TOTUM CARD

Make the most of discounts from the following brands, plus many more!



boohoo

ODEON
PARADISE ABOUT FILM

Boots

Pizza Hut

Alton Towers

Domino's Pizza

ASOS
discover fashion online

ASDA



Students Union



Freshers Fair

Volunteer and impress employers

Get some great work experience when you volunteer and really stand out from the crowd. It's a brilliant way to boost your skills and show employers how enterprising you are. To find out about volunteering opportunities email:

volunteer@walsallcollege.ac.uk

Speak Up

Only you can know what it's like to be a student and if you want to get more involved in the student experience then becoming a Student Rep, Student Union Officer or Student Governor could be the role for you. You will receive training, support and will help other students get their voice heard. To find out about these roles email: **studentsunion@walsallcollege.ac.uk**

Make great savings

Walsall College Students' Union is affiliated to the National Union of Students who promote and represent students' rights & issues. Being part of the NUS enables students to engage with a range of national campaigns **www.nus.org.uk**

Students can also save money with the TOTUM card which offers over 200 discounts online and in store. Find out more at, **www.totum.com**

Have fun

We want you to enjoy your time at college and we have lots of events and activities throughout the year. We always want to hear if you have any ideas or suggestions so please feel free to drop in and see us when you start college or find us at:

studentsunion@walsallcollege.ac.uk



We are part of the AoC Sports League scheme with teams in basketball and football.

Healthy Body, Positive Future

Alongside your study programmes, our state-of-the-art sports hall offers you the chance to come and have a go at football, cricket, volleyball, basketball, table tennis, tennis, badminton and dodgeball, as well as a range of dance and relaxation classes including yoga and pilates.

It's a great way to have fun, socialise and make new friends. There's also opportunities to get involved in volunteering and offsite activities and try something really exciting. This year has seen college students involved in many activities including tennis and golf. The best part is that it's all **FREE!** We have academies in basketball and football. They offer talented students an opportunity to work towards sporting success. For more information email sportsdevelopment@walsallcollege.ac.uk



Enrichment

Taking part in enrichment and extracurricular activities is a crucial part of student life. They are a brilliant way to meet different people, try new things, get active and of course, have fun while learning important life skills.

Many of our enrichment activities are linked to the courses we offer. On one day you could be flying a drone and on another day, learning how to patch plaster a wall. There's even pinhole photography, building your own digital device or games art visualisation to try out.

What's more, activities can be provided to reflect students' interests, so if there is ever anything you would like us to offer such as a jewellery-making class, then we'd be happy to set something up. We also invite you to hear from guest speakers, raise money for charity and enjoy marking national events such as Remembrance Day and other key awareness, cultural and religious festival dates from Black History Month to Chinese New Year to Diwali.

We look forward to getting you involved.

How to Apply

Don't forget to apply early to get on to the course you want!

+

Step 1

Fill in your application form

Complete the online form, or call us for a paper copy if that's easier.

💬

Step 2

Come and meet us

We'll invite you in for an interview with the subject tutor - it's a great chance to talk about the course, and discuss how it can help you achieve the career you want. It might also include an assessment - perhaps a portfolio review or an audition. We'll also invite you and your parent/s or guardian to an admissions evening to really get a feel for the College.

Visit us

Come along to an Open Day and discover for yourself why Walsall College is a brilliant place to start your journey for your ambitions! For fast track entrance to our Open Days, register your details on our website www.walsallcollege.ac.uk/planmyvisit

Don't Forget!

If you are successful, make sure to check your emails and accept your offer. We will also be in touch to invite you into the College to attend an assessment or transition day.

Open Day

10th October
(4pm - 8pm)

Open Day

26th November
(4pm - 8pm)

Open Day

25th January
(10am - 2pm)

Open Day

26th March
(4pm - 7pm)

Open Day

21st June
(10am - 2pm)

Results Day

Collect your VTQ/
T Level/ A Level/
GCSE Results

Start of Term

October 2024

November 2024

December 2024

January 2025

February 2025

March 2025

April 2025

May 2025

June 2025

July 2025

August 2025

September 2025

1 2

1 2

1 2

1 2 3

1 2 3

1 2 3

1 2 3

1 2 3

1 2 3

1 2 3

1 2 3 4

2 4

1

Apply to Walsall College

Applications are open from the October Open Day. Most students apply early as places fill up fast!

2

Interview

Attend your interview - this may be during school hours or scheduled on a weekday evening (some interviews may be conducted virtually).

3

Assessment & Transition Days

Once you have received a course offer, you will be invited to attend an assessment or transition day. Attendance on these days is mandatory for most courses so we strongly encourage you to book and attend.

These dates will give you a taste of what life will be like on your new course, you can meet your tutors and peers and get all the information you need about starting college.

4

Enrolment

Come and enrol on your course!

HAVE ANY QUESTIONS?
GET IN TOUCH:

📞

01922 657000

💻

walsallcollege.ac.uk

✓

Step 3

Congratulations - you've been offered a place!

This will be a conditional offer based on your predicted results and any other conditions for your course. If you don't get the results you need, please don't panic. We're right here to help you look at different options.

🏠

Step 4

Start your course!

Welcome to Walsall College. Courses kick off in September with induction activities and a Freshers Fair.

Stay Local, Go Further with our HE courses

Your Walsall College education doesn't need to stop when you reach 18, or when you get a job. We offer a range of higher education courses including degrees right here.



With our HI:ED university level courses, we can help you on the way to your dream job without going any further afield. And if university is your goal, you'll find it's a fantastic, cost-effective step on the way.

Access Courses (pre Higher Education)

Get the skills you need for HE - they're a great foundation to build on.

Foundation Degrees

Get the know-how and up-to-date specialist industry skills that employers need - then top-up to full degree level at the College or university if you like.

Higher National Certificate/ Diplomas (HNCs/HNDs)

These offer a mix of the academic, practical and vocational, including our new HTQ accredited qualifications. Enjoy your improved career prospects straightaway or top up to degree level.

Level 6 Top-Up Degrees

We're delighted to offer our one-year top-up designed to convert an existing qualification at Level 5 into a full BA or BSc Honours qualification at Level 6. It's aimed at successful HND/FdA (or equivalent) graduates who want to gain an affordable, accessible university level qualification. Visit our website to see what's on offer.

Higher Apprenticeships

Get the higher level skills employers want - with the opportunity to enrol on higher level courses (may need additional qualifications for some higher level courses).

Professional Qualifications

Enhance your skills and career prospects with these higher level courses.



Four reasons to study higher education at Walsall College

- Spend less** Study our HNC/D and top-up courses at a fraction of the price of university with no compromise on quality.
- Achieve More** Our close industry links will help you get the skills that employers are looking for and put you on course to the career you want.
- Fantastic Facilities** £76m invested in five state of the art campuses over the last seven years.
- Small Class Sizes** Our lessons are taught in small classes increasing the one-to-one support from your lecturer.



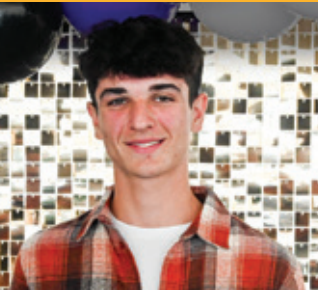
Where are they now?

Your future starts with Walsall...but the world awaits.
Our graduates go on to universities around the globe.
Where will your course take you?

“

"I came to college to improve as an athlete. I achieved this while excelling academically."


Callum Merrett
Studied: Level 3 Sports Coaching & Development
Progression: BSc Sport, Exercise & Health Sciences - University of Birmingham



“

"The T Level is the best possible course with which to gain beneficial experience, improve your knowledge and work towards your future career goals."


Eleanor Causier
Studied: T Level in Health
Progression: BSc Physiotherapy - University of Wolverhampton



“

"With four days in college and one day on placement, the T Level is like a reverse apprenticeship. It prepared me for work and supported my ambitions."


Shahzeb Adnan
Studied: T Level in Computing
Progression: Digital Technology Solutions Apprentice - BT Group



“

"Lecturers helped me with coursework, my UCAS application and the LNAT law entrance exam to go on to my degree."

Amilah Akhtar
Studied: A Level Law and Psychology with Level 3 Criminology
Progression: BSc Law at University of Birmingham



Our students have gone on to study at universities across the UK

Last year, our students progressed on to

50 destinations*

Here's just a few...

*Correct at time of print for students starting university in 2024



Edinburgh Napier University

Leeds Trinity University

University of York

Liverpool John Moores University

Sheffield Hallam University

De Montfort University

University of Birmingham

University of Worcester

Oxford Brookes University

University of Westminster, London

Buckinghamshire New University

Bath Spa University

Bournemouth University

Cardiff University

Aberystwyth University

University of Nottingham

University of Chester

Manchester Metropolitan University

Apprenticeships



**See our
latest
vacancies**

Scan the QR code

How does an Apprenticeship work?

Initial Assessment

Before you begin your apprenticeship, we will conduct an initial assessment with you. This will assess your English and Maths skills.

Developing Knowledge, Skills and Behaviours

Your apprenticeship will develop the knowledge, skills and behaviours you need to be able to work competently in the particular occupation you have chosen:

Knowledge - the information, technical detail, and 'know-how' that you develop and understand to successfully carry out your duties. Knowledge will be occupation-specific and generic.

Skills - the practical application of knowledge needed to successfully undertake your duties. These are learnt through on and/or off-the-job training or experience.

Behaviours - mindsets, attitudes or approaches needed for competence. These may be similar across other apprenticeships, for example, being adaptable and professional.

Off-the-Job Training

Off-the-job training is learning completed outside of your day-to-day work duties. This could be your time studying at college. This training is part of your normal (contracted) working hours.

English and Maths

Applicants who do not have grades 4 in GCSE Maths and English or equivalent, will be required to study these to improve their grades. This will be a mandatory element of the programme.

Gateway

The 'Gateway' is a set of requirements that need to be met so your employer is able to put you forward for an 'End Point Assessment'. This includes completion of the mandatory aspects of the apprenticeship and any work that supports specified assessment methods.

End Point Assessment

End point assessment (EPA) is an assessment of the knowledge, skills and behaviours that you have learned throughout your Apprenticeship and which confirms that you are occupationally competent.

Apprenticeships

An apprenticeship is a brilliant first step on the career path in many businesses. They're an excellent way of gaining nationally recognised qualifications whilst earning a wage, and combine practical 'hands on' work experience with academic knowledge.

Put the skills you learn into practice on the job, in the workplace, in real life situations - what could prepare you better?

Apprenticeships are available from Level 2 to Level 7 in a wide range of subjects.

How do you become an apprentice?

You might already be employed but if not, to find job vacancies go to:

- www.apprenticeships.gov.uk
- www.walsallcollege.ac.uk/apprenticeships

If you are already employed...

If you want to further your qualifications in the job you are currently in, you could ask your employer if this is possible. Apprenticeship training won't cost your employer anything* if you are between the ages of 16-18. **Subject to eligibility.*

How much can you earn?

The National Minimum Wage for apprentices is £6.40** per hour (as of Apr 2024), but many employers pay more - the average salary is approximately £244 per week, but some employers could pay more.

What are the entry requirements?

Ideally you will possess grade 4 or above in English and Maths; we can offer support if required. Each employer and Standard will have different entry criteria. Check with our Apprenticeships Team for further information.

What if you don't meet the entry criteria?

Don't worry, there are a number of routes you can follow to help you get the required skills to do an Apprenticeship. Please come in to the college to the Job Shop or call **01922 651129** and we can discuss your options.

***subject to change (correct at time of print)*

We offer Apprenticeships in:

- Accounting, Finance and Management
- Administration and Customer Service
- Automotive
- Business Accounting and Enterprise
- Construction and Property Maintenance
- Dental
- Education and Teacher Training
- Electrical Installation
- Engineering
- Health & Social Care
- Pharmacy
- Scaffolding, Roofing & Groundwork
- Signmaking



**You're paid to learn
and receive excellent
training. I love being
in control of my
schedule. My work
life is more flexible
and I've benefited
more financially.**

Achieving Together

The Achieving Together programme is designed for young people aged 14-17 looking for a mainstream education experience that is an alternative to school or home study.

The programme focuses on improving your academic qualifications in English, Maths and ICT, whilst delivering a package of employability qualifications to develop skills and qualities related to communication, team work, confidence and problem solving. You'll get English, Maths, ICT and a package of employability and social skills you need for life and work. You'll also work on building up your confidence, enhance your problem solving skills and build on your communication by working in teams. Smaller class sizes - and dedicated attention from our encouraging tutors - help you achieve your potential in a supportive environment.



How to join:

This programme is available in the following ways:

School Links: A referral from your school

Elected Home Educated (EHE): Students who are currently registered as Elected Home Educated with the Local Authority (LA)

Post 16: Students who are over 16 years of age but do not have the academic qualifications to enrol onto a mainstream vocational course, or who need additional social or emotional support to succeed.

The Achieving Together team will work with students to improve their knowledge in a variety of subjects, with the aim of achieving Entry 3, Level 1 and Level 2/GCSE qualifications.

Entry Requirements

There is no formal entry criteria. There will be an Interview, Initial Assessment and discussion on past achievements (non-educational).

Subjects covered:

- Functional Skills English (Entry Level 1 – Level 1)
- Functional Skills Maths (Entry Level 1 – Level 1)
- Functional Skills ICT (Entry Level 2 – Level 2)
- GCSE English & Maths
- The Prince's Trust
- Personal Social Development and Employability
- Group Tutorial



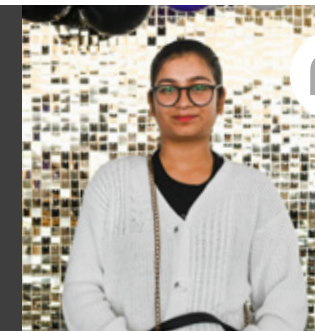
Safeguarding and Wellbeing Support

As an Achieving Together student you'll have a dedicated Safeguarding and Wellbeing Officer who is assigned to you and will be committed to every aspect of your wellbeing. The Safeguarding and Wellbeing Officer will provide support to students facing barriers preventing you from maximising your academic potential.

Support can be focused on mental health, social and emotional well-being, lack of confidence, low self-esteem or simply a listening ear.

Thinking about next steps?

You can move on to a cross-college course, training programme or employment.



"Achieving Together is about being confident, making new friends and improving your English and Maths. Best of all, it's so much fun through the activities you do and trips you go on. It helps build your future."

Harshdeep Kaur
Progression: Level 1 & 2 Beauty Therapy

FIND OUT MORE



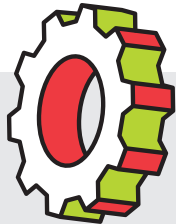
Automotive

Do you have a driving ambition to work with vehicles? If you love fixing cars, trucks and motorbikes, our courses can lead to a rewarding career in the retail motor industry.

In our industry-standard training workshop, you'll learn how to service vehicles, and diagnose and fix mechanical and electric issues. You'll also experience hybrid and electrical technology, preparing you for the future of the automotive sector.

Employer links include:

- Halfords
- West Midlands Ambulance Service
- West Midlands Fire Service
- Electude UK
- Trade Centre UK



Aspire to be...

There are so many careers in the automotive sector including:

- Auto Technician
- MOT Inspector
- Vehicle Service Technician
- Car Manufacturing Technician
- Automotive Engineer
- and much more!

Did you know...

More than **1.62 million** engines were built in the UK in 2023

You could earn...

- £ Motor Mechanic
£18,000 - £35,000
- Motor Vehicle Breakdown Engineer
£26,000 - £48,000
- Figures taken from National Careers Service

Choose your pathway

Study Automotive **your** way with one of the following pathways:

VTQ Pathway	T Level	Apprenticeships
Level 1 Motor Vehicle Maintenance Level 2 Motor Vehicle Maintenance	Engineering & Manufacturing T Level Pathway (Light Electric Vehicles)	Level 3 Heavy Vehicle Service and Maintenance Technician Apprenticeship Standard Level 3 Motor Vehicle Service and Maintenance Technician (Light Vehicle) Apprenticeship Standard

Develop career-ready skills

- Vehicle systems - suspension, steering, braking, engine, electronic
- Electric/Hybrid vehicle technologies and systems
- Tyre legislation and technical information
- Diagnostic procedures
- Customer care and satisfaction
- Carrying out vehicle safety inspections and routine maintenance
- Automotive Fast-Fit systems
- Digital skills including use of autodata software and diagnostic equipment

How to Apply

Pick the qualification pathway you would like to study, for your chosen subject on our website. During your interview you will be assigned a level dependent on your predicted grades.

Entry Requirements

VTQ Pathway

Level 1: No formal qualifications are required. Interview, dexterity test and an initial assessment will be required.

Level 2: A level 1 qualification in a related subject, interview, initial assessment and a dexterity test.

T Level Pathway

- Grade 5 preferred in Maths, English and Science.
- Interview with a tutor and initial assessment
- A commitment to undertaking a 45-day industry placement following a successful interview with an employer.

Apprenticeships

Ideally you will possess grade 4 or above in English and Maths; we can offer support if required. Each employer and Standard will have different entry criteria. Check with our Apprenticeships Team for further information.

Thinking about next steps?

You can move on to a higher level apprenticeship, university or employment.



FIND OUT MORE



Aviation Operations, Travel & Tourism

Are you passionate about travelling and would like to experience new adventures, cultures and a world of employment opportunities?

The tourism industry is growing fast and there are lots of opportunities at home and abroad. Develop a career in this diverse industry, become a travel agent, aircraft dispatcher, cabin crew, passenger service agent...the world is your oyster.



Employer links include:

- easyJet
- Birmingham Airport
- Jet2.com
- Cooperative Travel
- TUI
- Ryanair

Aspire to be...
There are so many careers in travel and tourism including:

- Aircraft Dispatcher
- Cabin Crew
- Resort/Holiday Rep
- Baggage Advisor
- Departure/Arrival Agent
- Travel Consultant
- and much more!

Did you know...
By 2025, the tourism industry UK is set to be worth over **£257 billion**.

You could earn...

£

Travel Agency Manager

£20,000 - £40,000

Figures taken from National Careers Service

Cabin Crew

£15,000 - £30,000

Choose your pathway
Study Aviation, Operations or Travel & Tourism **your** way with one of the following pathways:

- Aviation & Cabin Crew VTQ Pathway

Level 2 Introduction to Cabin Crew, Aviation and Ground Operations

Level 2 Diploma in Aviation
- Travel & Tourism VTQ Pathway

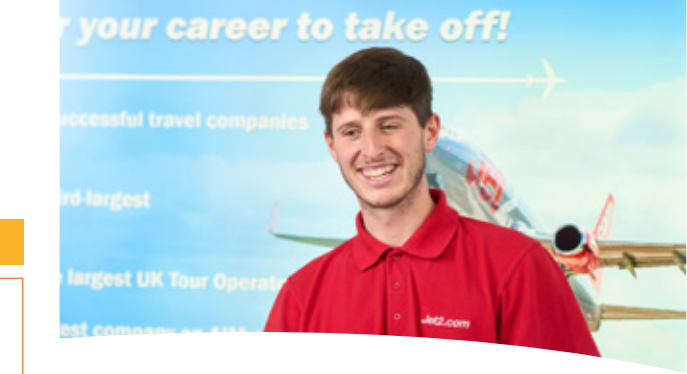
Level 2 Diploma in Travel & Tourism

Level 3 Introductory Diploma in Travel & Tourism

- Develop career-ready skills and knowledge**
- Holiday promotion, sales and customer service
 - Understanding tourism in the UK and the world
 - Knowledge of overseas resort operations
 - Interpersonal and communication skills
 - Understanding of airline and aviation operations
 - Knowledge of health, safety, security and emergency procedures
 - Crew room duties and the role of cabin crew
 - Security and Communications required to work in an aviation environment

Thinking about next steps?

You can move on to a higher level apprenticeship, university or employment.



Entry Requirements
Aviation & Cabin Crew Pathway
Level 2: 4 GCSEs at grade 3 or above and a Grade 4 in English.

Travel & Tourism Pathway
Level 2: 4 GCSEs at grade 3 including English and Maths.
Level 3: 4 GCSEs at grades 4 or above including English Language and/or Maths or a Level 2-related qualification.

How to apply
Pick the qualification pathway you would like to study, for your chosen subject on our website. During your interview you will be assigned a level dependent on your predicted grades.

“Learning from experienced tutors from the travel industry gave me the knowledge and drive to follow in their footsteps.”

Abi Poxon
Progression: Cabin Crew - TUI

FIND OUT MORE

Business, Management and Marketing

Business is booming and you can be part of it. You'll discover how organisations work and what different departments do to make them a success.

Learning from industry experts, you'll gain essential skills in communication, professionalism, leadership, decision-making, administration, marketing and more. So whatever your career ambitions - whether you want to work in a business or start your own - you're set up for success.



Employer links include:

- Dudley Council
- whg
- The Entertainer
- Dudley Group NHS Foundation Trust
- Aston University

Aspire to be...

Business and management skills open the door to careers like:

- Administrator
- General Manager
- Human Resources Officer
- Business Development Manager
- Marketing Officer
- and much more!

You could earn...

£

Marketing Executive

£20,000 - £65,000

Business Project Manager

£29,000 - £75,000

Figures taken from National Careers Service

Choose your pathway

Study Business and Management **your** way with one of the following pathways:

VTQ Pathway	Apprenticeships
BTEC Level 2 Technical Certificate in Marketing BTEC Level 3 Extended Diploma in Business and Management BTEC Level 3 Extended Diploma in Business and Marketing	Level 3 Team Leader/Supervisor Apprenticeship Standard Level 5 Operations or Departmental Manager Apprenticeship Standard

Develop professional skills

- Professional workplace communication
- Business administration and report writing
- Marketing, events and promotion
- Business decision-making and leadership styles
- Digital skills inc software systems, email and social media tools
- Understanding Equality, Diversity and Inclusion
- Understanding HR systems and legal requirements
- Look at business improvement techniques
- Devising digital marketing campaigns
- Branding a business
- International business
- Recruitment and selection

Entry Requirements

- VTQ Pathway**
Level 2: 5 GCSEs grade 3/4 including GCSE Maths and English grade 3 or above.
Level 3: 5 GCSEs at grade 4 or above including Maths and English. You will also be asked to sit a short written assessment.
- Apprenticeships**
Ideally you will possess grade 4 or above in English and Maths; we can offer support if required. Each employer and Standard will have different entry criteria. Check with our Apprenticeships Team for further information.

How to apply

Pick the qualification pathway you would like to study, for your chosen subject on our website. During your interview you will be assigned a level dependent on your predicted grades.

Thinking about next steps?

You can move on to a higher level apprenticeship, university or employment.

FIND OUT MORE

Accounting and Finance



If you're good with numbers and want a career in business, accounting and finance could be for you.

Finance skills are in demand - every business needs to balance the books, submit their taxes, and pay staff and suppliers. Whether you go straight into employment - for example, as a finance officer or accounts clerk - or want to develop skills and confidence to begin further training, a rewarding career starts here.



Employer links include:

- Wolverhampton Council
- Walsall Council
- HSBC
- Natwest
- DJH Mitten Clarke

Industry Spotlight

There are so many careers in accounting and finance including:

- Accounts Payable Clerk
- Bookkeeper
- Budget Analyst
- Accountant
- Financial Advisor
- Credit Controller
- and much more!

You could earn...

£ Management Accountant
£22,000 - £60,000
Figures taken from National Careers Service

Choose your pathway

Study Accounting and Finance **your** way with one of the following pathways:

VTQ Pathway	Apprenticeships
Level 3 Business and Management Accounting	Level 2 Accounts or Finance Assistant Apprenticeship Standard
A Level Pathway	Level 3 Assistant Accountant Apprenticeship Standard
A Level Accounting, A Level Economics and A Level Business	Level 4 Professional Accounting or Taxation Technician Apprenticeship Standard

Develop in-demand financial skills

- Calculating VAT and submitting a VAT return
- Learning about different types of pay and pensions
- Using payroll software to pay wages
- Working with sales and purchase ledgers
- Understanding accounting transactions
- Running calculations and ensuring payments are correct
- Complying with relevant legal requirements
- Producing reports using accounting software
- Look at security and risk
- Fundamentals of law
- Data driven analytics and innovation

How to apply

Pick the qualification pathway you would like to study, for your chosen subject on our website. During your interview you will be assigned a level dependent on your predicted grades.

Entry Requirements

- VTQ Pathway**
Level 3: 5 GCSEs at grade 4 or above including Maths and English. You will also be asked to sit a short written assessment.
- A Level Pathway**
Students will need a grade 6 in English Language and Grade 5 in Maths.
- Apprenticeships**
Ideally you will possess grade 4 or above in English and Maths; we can offer support if required. Each employer and Standard will have different entry criteria. Check with our Apprenticeships Team for further information.

Thinking about next steps?

You can move on to a higher level apprenticeship, university or employment.



FIND OUT MORE



Business Administration and Customer Service



If you want to work in retail or hospitality - or excel in a call centre environment - customer service skills are essential.

And with our apprenticeships, you can earn while you learn them. You'll split your time between studying and working in a customer service role, putting your new skills into practice. Learn how to build rapport, give great service, make sales, resolve complaints, and keep customers happy.

Employer links include:

- The Dudley NHS Group Foundation Trust
- University Hospitals Birmingham NHS



- Aspire to be...**
Customer service skills can lead to jobs like:
- Call Centre Agent
 - Bank Clerk
 - Patient Care Coordinator
 - Technical Support Representative
 - Help Desk Support and much more!

Did you know...
109,000 people in the UK work in customer service.

You could earn...

£ Business Advisor	Business Analyst
£25,000 - £54,000	£23,000 - £55,000

Figures taken from National Careers Service

Apprenticeships

- Level 3 Business Administrator Apprenticeship Standard
- Level 2 Customer Service Practitioner Apprenticeship Standard
- Level 3 Customer Service Specialist Apprenticeship Standard

Develop career-ready skills

- Understanding customers and building rapport
- Creating a customer focused experience
- Achieving sales through effective selling skills
- Managing customer expectations
- Knowing how to adapt your service style
- Dealing with customer conflict and challenge
- Understanding industry best practice
- Digital customer service skills
- Look at business improvement techniques
- Writing reports



Entry Requirements

Apprenticeships
Ideally you will possess grade 4 or above in English and Maths; we can offer support if required. Each employer and Standard will have different entry criteria. Check with our Apprenticeships Team for further information.

Thinking about next steps?

You can move on to a higher level apprenticeship, university or employment.



"I chose an Apprenticeship to have a better understanding of the industry I wanted to work in."
"I get to know how a company works and experience different aspects of a business in a hands-on way."

Stanislav Makuna
Studying: Business Administrator Apprenticeship Standard – Surespan Covers

FIND OUT MORE



Law



From crime and courtroom drama, to consumer and human rights, law touches every part of our lives.

It's a fascinating topic and not just for aspiring barristers and solicitors. Studying law can lead to work in a legal firm or business, victim support, law enforcement, or rehabilitation of offenders, and more. If you can't get enough of true crime podcasts, combine law with criminology, psychology or sociology for an insight into the criminal mind.



Employer links include:

- Bila Legal Services
- HCB solicitors

Aspire to be...

There are so many careers in law including:

- Legal Secretary
- Barrister
- Paralegal
- Court Usher/Officer
- Solicitor
- Probation Officer
- Company Secretary

and much more!

Did you know...

There are over 219 thousand solicitors in the UK.

You could earn...

£	Company Secretary	Barrister
	£26,000 - £90,000	£21,000 - £200,000
	Figures taken from National Careers Service	

Choose your pathway

Study Law, Criminology and Psychology *your* way with one of the following pathways:

VTQ Pathway
Level 3 Applied Law, Criminology & Psychology
A Level Pathway
A Level in Law, Psychology and Sociology

Develop sought-after skills and knowledge

- Understand the British legal system
- Learn about criminal liability, consumer rights and more
- Discover the history of law, criminal law and family law
- Explore criminology, crime and punishment
- Understand the human mind
- Develop business and marketing skills
- Conduct digital research and develop IT skills
- Crime scene to court room
- Criminological theories
- Psychological approaches and applications
- Conducting psychological research



Entry Requirements

VTQ Pathway

Level 3: GCSE English Language at grade 5 plus Maths at grade 4 (ideally a grade 5) and three other GCSEs at grade 4/5.

You also will be asked to sit a short written assessment.

A Level Pathway

5 GCSEs at Grade 5 including English Language and Maths at Grade 5.

You also will be asked to sit a short written assessment.

How to apply

Pick the qualification pathway you would like to study, for your chosen subject on our website. During your interview you will be assigned a level dependent on your predicted grades.

Thinking about next steps?

You can move on to a higher level apprenticeship, university or employment.



FIND OUT MORE



Computing

From web design and games development to data analysis and cyber security, computing skills are in high demand.

And - as computers become ever-more important in our lives - the opportunities for computer experts will keep growing. Choose a computing course that matches your experience and aspirations - then get hands-on with the latest technology in our high-spec labs. You'll be supported by industry experts and benefit from our close links with tech brands and local employers.

Employer links include:

- Covatic
- Methods
- LearnPlay Foundation
- CISCO
- Poundland
- Vantage 365



Aspire to be...

There are so many careers in computing including:

- IT Technical support
- Games/Web Developer
- Software Developer/Engineer
- Security Engineer
- Software Analyst
- and much more!

You could earn...

£ Software Developer
£24,000 - £70,000
Figures taken from National Careers Service

Choose your pathway

Study Computing **your** way with one of the following pathways:

VTQ Pathway

Level 1 BTEC in Computing
Level 2 BTEC in Computing

Develop cutting-edge career skills

- Understanding software, systems and networks
- Web and games design and programming
- Programming languages and writing code
- Building computer systems
- Application and interface design
- System analysis and design
- Software development
- Cyber security

How to apply

Pick the qualification pathway you would like to study, for your chosen subject on our website. During your interview you will be assigned a level dependent on your predicted grades.

Thinking about next steps?

You can move on to a higher level apprenticeship, university or employment.

FIND OUT MORE

T Level

T Level in Computing - Digital Production, Design and Development

A Level Pathway

A Level Computer Science combined with BTEC Diploma in Computing
A Level Maths combined with BTEC Diploma in Computing

Entry Requirements

VTQ Pathway
Level 1: No formal qualifications needed.
Level 2: 3 GCSEs at grade 3 or above including English Language and Maths. Relevant Level 1 qualifications will also be considered.

A Level Pathway
It is expected that applicants will have GCSE maths at grade 6. A minimum of four additional GCSEs at grades 5-9 is also required, including English.

T Level Pathway
Grade 5 GCSE in Maths and English Language and at least 4 other GCSEs at Grade 4 and above in relevant subjects.
A successful interview with a tutor. A commitment to undertaking a 45-day industry placement following a successful interview with an employer.

Bricklaying

Build a brilliant career with bricklaying. As a bricklayer, you'll be in demand on construction sites, erecting new homes and business premises.

You can also progress to niche areas like heritage restoration and stonemasonry. Experienced bricklayers can progress to construction site management, self-employment, tutoring and more. You'll study under industry experts to become a competent, confident bricklayer - with the skills to pursue your preferred career path.

Employer links include:

Jessup Keepmoat Homes
Ibstock Bricks Taylor Wimpey



Aspire to be...

Bricklaying skills can lead to lots of careers including:

Bricklayer Self-employed Tradesperson

Construction Site Supervisor

Construction Manager Stonemason

Did you know...

12,000 construction jobs have been created in the West Midlands over the last 3 years.

You could earn...

£ Bricklayer **£17,000 - £40,000** Construction Manager **£27,000 - £65,000**
Figures taken from National Careers Service

Choose your pathway

Study Bricklaying **your** way with one of the following pathways:

VTQ Pathway

Level 1 Bricklaying
Level 2 Bricklaying

Apprenticeship

Level 2 Bricklayer Apprenticeship Standard

Develop in-demand construction skills

- Constructing block walling, brick walling and cavity walling
- Mixing and preparing construction materials
- How to construct chimneys, fireplaces and decorative features
- How to repair and maintain masonry
- Health, safety and welfare in construction
- Knowledge of construction technology
- Digital skills in communication and information management
- Working safely and professionally

Entry Requirements

VTQ Pathway

Level 1: No formal qualifications needed.

Level 2: A Level 1 Bricklaying qualification and an appropriate level of English and Maths.

Apprenticeship

Ideally you will possess grade 4 or above in English and Maths; we can offer support if required. Each employer and Standard will have different entry criteria. Check with our Apprenticeships Team for further information.

How to apply

Pick the qualification pathway you would like to study, for your chosen subject on our website. During your interview you will be assigned a level dependent on your predicted grades.

Thinking about next steps?

You can move on to a apprenticeship or employment.



Student bricklayers go green and virtual



SCAN TO
**READ
MORE**

**FIND
OUT
MORE**



Building Maintenance

If you're good with your hands and want to experience different areas of construction and repair, building maintenance is for you.

You'll get hands-on with a range of construction crafts - including bricklaying, carpentry, plastering and tiling - becoming highly skilled in them all. After your course, you'll be ready to develop a career in estates, facilities or building management. Or, if you discover a talent for a particular trade, progress to further training.



Employer links include:

- Taylor Wimpey
- E-Act Academy
- Dudley Council
- Bromford Housing

Aspire to be...

Building Maintenance skills can lead to lots of careers including:

- Bricklayer
- Construction Site Manager
- Heritage/Historic Building Manager
- Multi-skilled Technician
- Joinery

Did you know...

Construction will need **217,000 new workers by 2025** to meet demand.

You could earn...

- £ Handy Person
£17,000 - £28,000
Figures taken from National Careers Service
- Building Control Manager
£22,000 - £60,000

Choose your pathway

Study Building Maintenance **your** way with one of the following pathways:

VTQ Pathway	Apprenticeships
Pathways into Construction Trades Level 1 Building Maintenance Operative Level 2 Building Maintenance Operative	Level 2 Roofer Apprenticeship Standard Level 2 Scaffolder Apprenticeship Standard Level 2 Property Maintenance Operative Apprenticeship Standard Level 2 Groundworker Apprenticeship Standard Level 2 Highways Maintenance Skilled Operative Apprenticeship Standard

Develop career-ready construction skills*

- Learn bricklaying, carpentry, joinery, painting, decorating, boarding, plastering, tiling and sign making
- Understand plumbing and drainage systems
- Use hand tools - such as screwdrivers, power drills, pliers and paper strippers - safely
- Understand different construction methods and materials
- Carry out repairs to walls, doors, frames, skirting boards
- Digital skills in communication and information management
- Working safely and professionally

* Your exact topics and skills will depend on the course and level you choose.

How to apply

Pick the qualification pathway you would like to study, for your chosen subject on our website. During your interview you will be assigned a level dependent on your predicted grades.

Entry Requirements

VTQ Pathway

Level 1: No formal qualifications needed.

Level 2: A Level 1 Construction qualification and an appropriate level of English and Maths.

Apprenticeship

Ideally you will possess grade 4 or above in English and Maths; we can offer support if required. Each employer and Standard will have different entry criteria. Check with our Apprenticeships Team for further information.

Thinking about next steps?

You can move on to a higher level apprenticeship, university or employment.



"The Level 1 and 2 courses give you adaptable skills to help you stand out with different employers. Tutors genuinely believe in your potential. There's lots of open feedback to build your self-esteem."

Nathan Adams
Progression: T Level in Construction: Design, Surveying and Planning

FIND OUT MORE

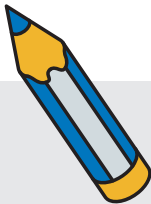


Carpentry and Joinery



Carpentry and joinery combine creativity, patience and practical skills to create furniture, fittings, floors, doors and more.

From making furniture to installing kitchens, if you enjoy working with wood and other materials, this could be the trade for you. You'll study the theory and practice of joinery and carpentry, getting plenty of hands-on instruction from expert professionals. On completion, a world of work awaits - from construction to heritage and the arts.



Employer links include:

- Liberon
- Nuttall
- GreenSquareAccord
- Stairways Midlands

Aspire to be...

Carpentry and joinery skills can lead to lots of careers including:

- Commercial/Construction Carpenter
- Bespoke Wooden Stair Builder
- Furniture Maker
- Heritage Restorer

Did you know...

Carpenters are the **largest group** of the building trades workers

You could earn...



Carpenter

£17,000 - £38,000

Furniture Maker

£20,000 - £28,000

Figures taken from National Careers Service

Choose your pathway

Study Carpentry and Joinery **your** way with one of the following pathways:

VTQ Pathway	Apprenticeships
Level 1 Carpentry and Joinery Level 2 Site Carpentry	Level 2 Carpentry and Joinery Standard

Develop practical professional skills

- Maintain and use relevant hand tools and power tools
- Produce woodworking joints
- Carry out first and second fix operations
- Carry out maintenance, non-structural and structural work
- Set up and operate cutting and shaping
- Digital skills in CAD, communication and information management
- Commercial operations like costing and scheduling
- Working safely and professionally

Entry Requirements

- VTQ Pathway**
- Level 1:** No formal qualifications needed.
- Level 2:** A Level 1 Carpentry and Joinery qualification and an appropriate level of English and Maths.

Apprenticeship

Ideally you will possess grade 4 or above in English and Maths; we can offer support if required. Each employer and Standard will have different entry criteria. Check with our Apprenticeships Team for further information.

How to apply

Pick the qualification pathway you would like to study, for your chosen subject on our website. During your interview you will be assigned a level dependent on your predicted grades.

Thinking about next steps?

You can move on to an apprenticeship or employment.

“Making something like a hardwood bar and varnishing it gives you a huge sense of achievement. Especially when you know that your client owns something that’s been built to last.”

Jake Hughes
Progression: Carpentry and Joinery Apprentice - Wedgewood Construction and Joinery

FIND OUT MORE

Electrical Installation

Does working in electrical technology spark your interest?

Whether it's powering people's homes or working on large-scale energy projects, there are lots of jobs in the sector that will be in demand - in or out of a recession. Our hands-on electrical courses will help you develop the skills to become a qualified electrician. You'll learn in our electrical workshop - built to industry standards - mastering electrical principles and installation techniques.



Employer links include:

- Aico
- Denmans Electrical Wholesalers
- Armeg Ltd
- Luceco Group
- Zemper

Industry Spotlight

Electrical installation skills can lead to so many careers including:

- Installation Electrician
- Electrical Fitter
- Electrical Winder
- Maintenance Electrician
- Telecommunication Operative

and much more!

You could earn...

£

Electrician
£17,000 - £38,000

Smart Meter Installer
£20,000 - £28,000

Figures taken from National Careers Service

Choose your pathway

Study Electrical Installation **your** way with one of the following pathways:

VTQ Pathway	Apprenticeship	T Level
Level 1 Electrical Installation Level 2 Electrical Installation	Level 3 Domestic Electrician Apprenticeship Standard Level 3 Installation Electrician/ Maintenance Electrician Standard	Construction and Building Service Engineering T Level Pathway (Electrical Installation)

Develop in-demand practical skills

- Electrical installations technology
- Installation of wiring systems and enclosures
- Fabrication techniques for electrical installation
- Electrical science and technology
- Health and safety in building services engineering
- The legislation for inspection, testing, commissioning and certification of electrotechnical systems and equipment
- Organising the work environment, maintaining tools and equipment
- Digital skills for research, measuring, recording, and using industry-specific software

How to apply

Pick the qualification pathway you would like to study, for your chosen subject on our website. During your interview you will be assigned a level dependent on your predicted grades.

Entry Requirements

VTQ Pathway

Level 1: No formal qualification needed.
Level 2: Level 1 Electrical qualification. It is expected that students will have GCSE Maths and English grades 4 or above.

T Level Pathway

5 GCSEs at grade 5 or above including English and Mathematics. It is preferable that applicants will also have a Science GCSE at Grade 5 or above.
A successful interview with a tutor. A commitment to undertaking a 45-day industry placement following a successful interview with an employer.

Apprenticeship

Ideally you will possess grade 4 or above in English and Maths; we can offer support if required. Each employer and Standard will have different entry criteria. Check with our Apprenticeships Team for further information.

Thinking about next steps?

You can move on to an apprenticeship or employment.



"Off-the-job training is a chance to meet others doing commercial, domestic/ residential and industrial work while learning from tutors with heaps of experience."

Martell Wilson
Electrical Installation Apprentice
– Midland Heart

FIND OUT MORE



Painting and Decorating

Painters and decorators are always in demand - from working with construction companies to running your own business.

Under the guidance of industry professionals, you'll learn specialist techniques, such as preparing surfaces, different methods of applying paint, and creating decorative finishes. You'll develop your skills in a lifesize simulated environment - learning everything you need to work safely and professionally - so you can advance your career with confidence.



Employer links include:

- Bell Group
- Chambers & Hall
- Decorer Ltd
- Dulux Paints
- Repair Care International
- AkzoNobel

Aspire to be...

Painting and decorating skills can lead to lots of careers including:

- Self-employed painter and decorator
- Industrial painting and finishing
- Historic Restorations
- and much more!

You could earn...

£

Painter/Decorator
£21,000 - £34,000

Interior Designer
£18,000 - £45,000

Figures taken from National Careers Service

Choose your pathway

Study Painting and Decorating **your** way with one of the following pathways:

VTQ Pathway	Apprenticeship
Level 1 Painting and Decorating Level 2 Painting and Decorating	Level 2 Painter and Decorator Apprenticeship Standard

Develop career-ready skills

- Applying paint by brush, roller and HVLP spray equipment
- Applying papers to ceilings and walls, around windows etc
- Preparing surfaces for decorating by filling holes and sealing cracks
- How to select, use, maintain and store paint, tools, wall coverings, equipment etc
- How to produce specialist decorative finishes
- Measuring, estimating and costing jobs
- Working safely and professionally
- Digital skills in communication and information management

Entry Requirements

- VTQ Pathway**
- Level 1:** No formal qualifications needed.
- Level 2:** Level 1 Painting & Decorating qualification and an appropriate level of English and Maths.

Apprenticeship

Ideally you will possess grade 4 or above in English and Maths; we can offer support if required. Each employer and Standard will have different entry criteria. Check with our Apprenticeships Team for further information.

How to apply

Pick the qualification pathway you would like to study, for your chosen subject on our website. During your interview you will be assigned a level dependent on your predicted grades.

Thinking about next steps?

You can move on to an apprenticeship or employment.



"I'd heard the college was the best place to learn painting and decorating. My experiences at Level 1 and 2 proved that."

Patrick Novak
Progression: Painter/Decorator – Chambers & Hall

FIND OUT MORE



Plumbing and Gas

Plumbers are always in demand, fitting and maintaining water systems, heating systems and gas boilers.

Whether you're just starting out or looking to build on your existing experience, our courses help you progress along this lucrative career path. You'll master essential plumbing techniques in our real-life simulated environment, as well as learn the science and theory of plumbing. Afterwards, you'll be ready for the next stage of professional training.



Employer links include:

- Wolseley UK
- Alpha Heating
- Adey
- Altecnic
- Ground and Heat Source Association (GSHPA)
- Baxi
- Worcester Bosch
- McAlpine Plumbing Products

Aspire to be...

There are so many careers in plumbing and gas including:

- Domestic Plumber
- Heating Engineer
- Commercial Plumber
- Renewable Energy and Technologies
- Installation and Maintenance

and much more!

You could earn...

£

Plumber
£21,000 - £40,000

Heat Pump Engineer
£22,000 - £45,000

Figures taken from National Careers Service



Choose your pathway

Study Plumbing *your* way with one of the following pathways:

VTQ Pathway	T Level
Level 1 Certificate in Plumbing Level 2 Certificate in Plumbing	T Level in Building Service Engineering: Plumbing and Heating

Develop in-demand technical skills

- Installation, repair and maintenance of plumbing systems
- Scientific principles for domestic, industrial and commercial plumbing
- Common plumbing processes
- Domestic gas principles and central heating
- Copper and steel pipework installations
- Jointing and pressure testing systems
- Drainage systems and sanitation
- Cold and hot water systems
- Domestic gas principles and central heating

Entry Requirements

- VTQ Pathway**
- Level 1:** No formal entry qualifications.
- Level 2:** A Level 1 plumbing qualification and a good standard of English and Maths.
- T Level Pathway**
- 5 GCSEs at grade 5 or above including English and Mathematics. It is preferable that applicants will also have a Science GCSE at Grade 5 or above.
- A successful interview with a tutor. A commitment to undertaking a 45-day industry placement following a successful interview with an employer.

Thinking about next steps?

You can move on to a higher level apprenticeship, university or employment.



"It's a great course with a relaxed learning environment, tutors who do great demos, lots of groupwork and friendly people everywhere."

Kyle Wain
Studying: Level 2 Plumbing

FIND OUT MORE



Professional Construction



If you'd like a career managing construction projects, you'll learn everything you need to know with this two-year T Level.

You'll discover how projects are run, from inception to completion, and what's involved every step of the way. You'll get practical experience working in project teams, exploring different roles to see which works for you. You'll also complete 315 hours* of work experience too - so you're ready for further study or employment.

*Equivalent to 45 days

Employer links include:

- Balfour Beatty VINCI
- BAM Construction
- Volkerfitzpatrick Ltd
- Kier Highways
- Tilbury Douglas
- Winvic
- Interclass



Aspire to be...

Professional construction skills can lead to lots of careers including:

- Quantity Surveyor
- Engineering Design Technician
- Construction Site Supervisor

and much more!

Did you know...

Every **1 in 14 people** globally work in the construction or building sector.

You could earn...

£

Quantity Surveyor
£25,000 - £80,000

Construction Manager
£27,000 - £65,000

Figures taken from National Careers Service



T Level

T Level in Construction: Design, Surveying and Planning

Develop career-ready construction skills

- How construction projects are run
- Methods of building design
- Building information modelling and geospatial surveying techniques
- How digital technology is used within the construction industry
- Scientific principles in construction - material properties, chemical composition etc
- Digital skills including computer aided design, digital measuring tools, BIM software
- Project management
- Commercial aspects of construction

Entry Requirements

5 GCSEs at grade 5 or above including English Language and Mathematics.
A successful interview with a tutor. A commitment to undertaking a 45-day industry placement following a successful interview with an employer.

Thinking about next steps?

You can move on to a higher level apprenticeship, university or employment.



"Working on HS2 is a once-in-a-lifetime opportunity and the perfect reward for all the hard work I put in during my studies."

Charlotte Gibberson
Progression: Civil Engineering Apprenticeship - Balfour Beatty VINCI

FIND OUT MORE



Signmaking

If you're good with your hands, like design and have great attention to detail, it could be a sign about what to study.

Learn to design, create and install a wide range of signage - from building and roadside signage to vinyl vehicle wraps. You'll get practical experience creating signage using different materials. And learn design software and principles, as well as commercial operations like costing and scheduling projects.



Employer links include:

- Bowden and Dolphin Signs
- Morelock Signs
- Singgeer
- Viewtec Signs
- Xsign
- Midland Signs & Graphics

Aspire to be...
Signmaking skills can lead to lots of careers including:

- Graphic Sign Maker
- Graphics Installer
- Roadside Maker and Fitter
- Transport and Vehicle Wrapper
- Sign Designer
- and much more!

Did you know...
83% of businesses use signage to promote their business.

You could earn...
£ Signmaker
£20,000 - £28,000
Figures taken from National Careers Service



Apprenticeship

Level 2 Signage Technician Apprenticeship Standard

Develop career-ready skills

- Designing, making and installing signage to customer requirements
- Knowledge of the signage industry and British Standards for Signage
- Experience using different signmaking materials - including vinyls, metals, fibreglass and more
- Experience of signmaking machinery, tools and equipment
- Design principles including layout, colour, scale and proportion
- Digital skills in CAD, communication and information management
- Commercial operations like costing and scheduling
- Working safely and professionally

Entry Requirements

Ideally you will possess grade 4 or above in English and Maths; we can offer support if required. Each employer and Standard will have different entry criteria. Check with our Apprenticeships Team for further information.

Thinking about next steps?

You can move on to a higher level apprenticeship, university or employment.



"An Apprenticeship is only as good as you make it. You do have to push yourself. Then the jobs and responsibilities you are given will increase once you start proving yourself."

Andy George
Level 3 Signage Technician Apprenticeship Standard

FIND OUT MORE



Art & Design

If you have designs on a creative career, immerse yourself in art, craft and design at Walsall College.

You can study everything from painting, photography and illustration, to digital design, textiles and printmaking. You'll be encouraged to express yourself through your own personal projects and have plenty of time to indulge your passion for different media. You'll learn about professional practice for artists and enjoy trips to galleries and museums for inspiration.



Employer links include:

- The New Art Gallery Walsall
- Birmingham Art Gallery

Aspire to be...

There are so many careers in art and design including:

- Animator
- Fashion Designer
- Product Designer
- Graphic Designer
- Photographer
- Fine Artist

and much more!

Did you know...

The creative arts industry employs **2 million people** in the UK.

You could earn...

£

Art Therapist

£35,000 - £50,000

Art Editor

£20,000 - £40,000

Figures taken from National Careers Service

VTQ Pathway

- Level 2 Art and Design Skills
- Level 3 BTEC Art and Design
- Level 3/4 Foundation Diploma Art and Design

Develop creative career skills

- Master your chosen media - fine art, photography, sculpture, design, graphics, textiles, printmaking, illustration
- Use ideas to explore, develop and produce art and design
- Build an art and design portfolio
- Work on live briefs
- Use design software such as Photoshop and Illustrator
- Use innovative new technology such as 3D printing

Entry requirements

- Level 1:** 4 GCSEs at grade 3 - 1 (including a curriculum-related subject). Or a Level 1 related qualification.
- Level 2:** 4 GCSEs at grade 4 or above including English Language and/or Maths are required. Or a Level 2 related qualification.
- Level 3/4:** 1 A Level grade C (or equivalent Level 3 qualification) in a subject and a strong GCSE profile including English GCSE grade 4 or above. AS qualifications are also welcomed. Mature students with alternative qualifications and/or work experience are welcomed.

How to apply

Pick the qualification pathway you would like to study, for your chosen subject on our website. During your interview you will be assigned a level dependent on your predicted grades.

Thinking about next steps?

You can move on to a higher level apprenticeship, university or employment.



"Ideas come to me quickly. I talk about my work confidently in class and when we exhibit our work publicly. I'm a better artist and better student."

Natalia Klobowska
Level 2 and 3 Art & Design

FIND OUT MORE



Photography

Explore photography as a medium for self-expression and a future career.

Under expert guidance, build on your existing photography skills to produce a portfolio of high-quality images. You'll experience a range of genres - from fashion and advertising, to landscapes and portraiture - working on real briefs from clients. You'll also develop skills for professional practice such as lighting techniques, darkroom skills, and digital post-production.



Employer links include:

- British Institute of Professional Photography (BIPP)
- Eileen Mason Photography

Aspire to be...

Photography skills can lead to careers including:

- Fine Art Photographer
 - Wildlife Photographer
 - Forensics Photographer
- and much more!

Did you know...

You'll need a **portfolio** of your work to demonstrate your ability and style. You can develop this through work experience, volunteering, college projects or awards.

You could earn...

£	Photographer	Medical Illustrator
	£17,000 - £45,000	£28,000 - £43,000
Figures taken from National Careers Service		



VTQ Pathway

Level 3 BTEC Extended Diploma in Photography

Develop creative and technical skills

- Understanding the theory and practice of photography
- Communicating visually
- Developing and executing creative ideas
- Capturing and editing digital images
- Studio and location photography
- Experimental imagery in photography
- Darkroom practice
- Digital skills including Photoshop and post-production
- Photographic media, techniques and technology

Entry Requirements

4 GCSEs at grade 4 or above including Art, English Language and/or Maths. You will be invited to attend an interview, with a portfolio of images.

Thinking about next steps?

You can move on to a higher level apprenticeship, university or employment.

FIND OUT MORE



Creative Media

Aspire to work in film or TV production? Our courses could give you the competitive edge.

You'll work on a range of creative projects - like producing a short documentary - and complete 40 hours of work experience producing content for real clients. You'll develop practical skills in camera techniques, TV production and production design - and can get even more experience with our in-house student production company, Future Flames Productions.



Employer links include:

- James Brindley Foundation
- NHS
- One Walsall
- Royal Television Society
- Walsall Council
- West Midlands Combined Authority

Aspire to be...

There are so many careers in creative media including:

- Broadcast Journalist
- Vlogger
- Film Producer
- Lighting Technician
- Media Researcher
- Radio Broadcaster
- Camera Operative
- and much more!

You could earn...

£

Broadcast Engineer
£23,000 - £42,000

Video Editor
£18,000 - £45,000

Figures taken from National Careers Service



Choose your pathway

Study Creative Media **your** way with one of the following pathways

VTQ Pathway

Level 2 BTEC Diploma in Creative Media Skills
Level 3 BTEC Extended Diploma in Creative Media Production (TV & Film)

T Level Pathway

T Level in Media, Production and Broadcast

Develop creative and technical skills

- Fundamentals of creative practice
- Generating and communicating ideas
- TV production and production design
- Producing documentaries, videos and adverts
- Using filming cameras
- Pre-production, production and post-production
- Using 4K video equipment
- Editing footage on top-spec PCs and Macs using industry-standard software
- Film studies

Entry Requirements

- Level 2:** 4 GCSEs at grade 3-1. Or a Level 1 related qualification.
- Level 3:** 5 GCSEs at grade 4 or above including English Language and Maths. Or a Level 2 related qualification.
- T Level pathway:** 5 GCSEs at grade 5 or above including English and maths.

How to apply

Pick the qualification pathway you would like to study, for your chosen subject on our website. During your interview you will be assigned a level dependent on your predicted grades.

Thinking about next steps?

You can move on to a higher level apprenticeship, university or employment.



"There's a family feel within creative media. Lecturers all bring a unique perspective and insights to our learning. It's why I've progressed as a filmmaker."

Lana Millard
Progression: BA Hons Film Production – University of Wolverhampton

FIND OUT MORE



Fashion

Whether you dream of being a designer, stylist or visual merchandiser, we'll help you channel your passion for fashion.

You'll explore your personal creativity by producing designs and garments using a range of materials and techniques. You'll learn about the fashion industry - as well as fashion promotion and visualisation - and take part in a fashion show or photoshoot. You'll leave with a portfolio of work to show potential employers and universities.



- Employer links include:**
- Couture Company
 - Lauren Broxton
 - Brady Bags

- Aspire to be...**
- There are so many careers in fashion including:
- Fashion Designer
 - Stylist
 - Textile Designer
 - Fashion Journalist
 - Visual Merchandiser
 - Retail Buyer
 - Jewellery Designer
 - and much more!

- You could earn...**
- £ Fashion Merchandiser £16,000 - £36,000
 - £ Tailor £20,000 - £40,000
- Figures taken from National Careers Service



VTQ Pathway

Level 3 BTEC Extended Diploma in Fashion

Develop practical and creative skills

- Producing garments and pattern construction
- Using different materials, techniques and processes
- Fashion visualisation and promotion
- Visual recording in art and design
- Professional practice in art and design
- Computing in art and design
- Digital skills in design software
- Materials, techniques and processes

Entry Requirements

4 GCSEs at grades 4 or above including English Language and/or Maths. Or a Level 2 related qualification.

Thinking about next steps?

You can move on to a higher level apprenticeship, university or employment.



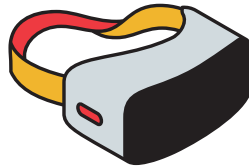
FIND OUT MORE



Games Art

The game art industry is a captivating realm that offers a world of boundless creativity and limitless possibilities.

It's a field where imagination comes to life, where breathtaking virtual worlds are born, and where captivating characters spring forth from the depths of the artist's mind. In the games industry, you have the power to shape immersive experiences, blend visual aesthetics with interactive storytelling, and transport players to extraordinary realms. From crafting stunning landscapes to designing intricate characters, the artistry in games holds the potential to captivate, inspire, and entertain millions of people worldwide.



Aspire to be...

There are so many careers in games art including:

- Pixel Artist
- Technical Artist
- Environmental Artist
- Concept Artist
- Animator
- Game Artist
- and much more!

You could earn...

£ Games Developer
£25,000 - £70,000
Figures taken from National Careers Service



VTQ Pathway

Level 3 BTEC Diploma in Games Art

Develop practical and creative skills

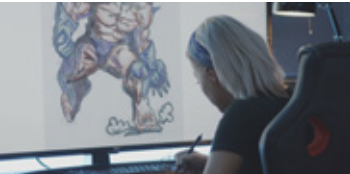
- Develop your drawing, sculpture, photography, animation and Illustration skills
- Gain insights into how both 2D and 3D software is utilised to create game characters, environments and objects
- Learn about the rich history of gaming and how this links to the history of art & design
- How traditional and contemporary visual culture inspires games design

Entry Requirements

4 GCSEs at grade 4 or above including Art & Design/ Creative Subjects, English Language and/or Maths (or a Level 2 related qualification).
Portfolio-based interview and demonstrate a strong ability in observational drawing.

Thinking about next steps?

You can move on to a higher level apprenticeship, university or employment.



FIND OUT MORE



Graphic Design

If you're artistic and love communicating ideas visually, studying graphic design could lead to a lucrative, lifelong career.

You'll study a variety of areas of design - from photography and typography to advertising and animation - under the guidance of expert staff, who are all active practitioners in the industry. You'll enjoy visits to galleries, design studios and agencies for inspiration - and develop a professional quality portfolio to impress future employers.



Employer links include:

- Public Health Walsall
- Urban Hax

Aspire to be...

There are so many careers in graphic design including:

- Graphic Designer
- Web Designer
- Branding Consultant
- Studio Manager
- Exhibition Designer
- Illustrator/Animator
- and much more!

You could earn...

£

Graphic Designer
£20,000 - £40,000

Web Designer
£18,000 - £40,000

Figures taken from National Careers Service



VTQ Pathway

- Level 2 Certificate in Graphic Design
- Level 3 Extended Diploma in Graphic Design

Develop specialist design skills

- Generating and executing visual concepts
- Photography, illustration and typography
- Packaging, advertising and editorial design
- Corporate identity
- Computer graphics, digital and web design
- 2D animation and 3D computer modelling
- Digital skills in Adobe design software, web design and desktop publishing

Entry Requirements

- Level 2:** 4 GCSE at grades 3 -1 or a related level 1 qualification
- Level 3:** 4 GCSEs at grades 4 or above including English Language and/or Maths. Or a Level 2 related qualification

Thinking about next steps?

You can move on to a higher level apprenticeship, university or employment.



"I had creative freedom to make decisions, problem solve and learn along the way. As time went on, my decision making improved, along with confidence in my work."

Faiz Fatima
Progression: HNC & HND Graphic Design

FIND OUT MORE



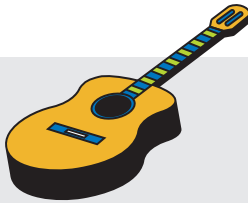
Music

Do you want to be a performer, producer, or work in the music industry? Develop your performance and professional skills with these courses.

You'll receive expert tuition from experienced musicians to perfect your music practice - and have plenty of opportunities to perform as an individual and as part of an ensemble. You'll also learn music production techniques and develop practical skills for a successful career.

Employer links include:

- Lauren Grace Musician
- Splinter Studios
- Resonance



Aspire to be...

There are so many careers in music including:

- Session Musician
- Music Journalist
- Artist/Tour Manager
- Music Producer
- Music Teacher
- Sound/Recording Engineer

You could earn...

- £ Live Sound Engineer
- £17,000 - £38,000
- Music Promotions Manager
- £20,000 - £28,000
- Figures taken from National Careers Service



VTQ Pathway

- Level 2 BTEC Diploma in Music Industry Skills
- Level 3 BTEC Extended Diploma in Music

Develop performance and professional skills

- Music performance and production techniques
- Using different musical styles
- Understanding the music business
- Working and developing as a musical ensemble
- Understanding the sound and music industry
- Music events management
- Songwriting
- Studio recording

Entry Requirements

- Level 2:** 4 GCSEs grade 3 - 1 (including a curriculum-related subject), or a Level 1 related qualification. Music performance and/or music technology experience, and an audition.
- Level 3:** 4 GCSEs at grade 4 or above including English Language and/or Maths. Or a Level 2 related qualification. Attend an audition.

Thinking about next steps?

You can move on to a higher level apprenticeship, university or employment.



FIND OUT MORE



Performing Arts

(Acting and Dance)

Whether you see yourself dancing on stage or acting on film, studying performing arts can prepare you for a creative career.

Our courses offer acting and dance pathways, developing your skills through practice and performance at our campus theatre, The Venue. Aspiring actors will learn stagecraft, singing and musical theatre skills and more. Meanwhile, dancers will train in a range of genres, from classical ballet, hip hop and street to contemporary dance.

Employer links include:

- Birmingham Hippodrome
- The Birmingham Rep
- Birmingham MAC
- New Art Gallery Walsall
- Curtis Stanley



Aspire to be...

There are so many careers in performing arts including:

- Actor/Theatre Performer/Dancer
- Theatre Manager
- Choreographer
- Community Arts Worker
- Costume/Prop/Set Designer

Did you know...

283,000 people work in music, performing and visual arts in the UK.

You could earn...

£

Stagehand
£19,000 - £30,000

Lighting Technician
£15,000 - £40,000

Figures taken from National Careers Service



Performing Arts Acting VTQ Pathway

- Level 2 BTEC Performing Arts
- Level 3 BTEC Performing Arts (Acting)

Performing Arts Dance VTQ Pathway

- Level 2 BTEC Performing Arts
- Level 3 Performing Arts (Dance)

Develop performance and professional skills

- Working in the performing arts industry
 - Performing arts production process
 - Acting skills and techniques
 - Musical theatre performance
 - Devising and performing plays
 - Developing your career as an actor or dancer
 - Developing a professional showreel*
- * Level 3 only

Thinking about next steps?

You can move on to a higher level apprenticeship, university or employment.



“Studying acting at college has helped me achieve even more than I expected. I’ve grown, matured and learned what it means to not only be an actor, but show as an artist how passionate I am about my work.”

Tyrelle Scarlett

Progression: BA Hons Acting at Northampton University

FIND OUT MORE

Entry Requirements

Acting Pathway

Level 2: 4 GCSEs at grades 3 - 1 (including a curriculum-related subject). Or a Level 1 related qualification

Level 3: 4 GCSEs at grades 4 or above including English Language and/or Maths. Or a Level 2 related qualification. Attend an audition.

Dance Pathway

Level 2: 4 GCSEs at grades 3 - 1 (including a curriculum-related subject). Or a Level 1 related qualification

Level 3: 4 GCSEs at grades 4 or above including English Language and/or Maths. Or a Level 2 related qualification. Attend an audition.

How to apply

Pick the qualification pathway you would like to study, for your chosen subject on our website. During your interview you will be assigned a level dependent on your predicted grades.

Childcare & Early Years

Dream of working in a school or nursery? Develop your abilities to care for, teach and support children with one of our rewarding childcare courses.

You'll learn about child development and communication, planning and managing educational activities, how to keep children safe and healthy, and lots more. You will also have the opportunity to work with local primary schools where you will host forest school activities. Your course could lead straight to a career with young people or lay the foundations for further study.

Employer links include:

Nurseries and primary schools across Walsall, West Bromwich, Cannock and Birmingham



Industry Spotlight

There are so many careers in childcare and education including:

- Primary or Secondary Teacher
- Educational Psychologist
- Education Welfare Officer
- Nursery Worker
- Teaching Assistant

Did you know...

802,000 people work in childcare in the UK

You could earn...

£ Primary Teacher £30,000 - £47,000 Youth Worker £22,000 - £35,000
Figures taken from National Careers Service

Choose your pathway

Study Childcare and Early Years **your** way with one of the following pathways:

VTQ Pathway	T Level	Apprenticeship
Level 1 Foundation Diploma in Caring for Children Level 2 Certificate Introducing Caring for Children and Young People Level 2 Diploma for the Early Years Practitioner Level 3 Diploma in Childcare and Education*	T Level in Education and Childcare	Level 3 Teaching Assistant Apprenticeship Standard

Develop career-ready skills

- Understanding children's growth and development
- Safeguarding, protection and welfare of babies and children
- Supporting children through play, musical and craft activities
- The communication needs of children with learning difficulties
- Paediatric first aid skills
- Healthy eating and nutrition for children and families
- Observation, assessment and planning activities
- Understanding schools, policies and procedures

How to apply

Pick the qualification pathway you would like to study, for your chosen subject on our website. During your interview you will be assigned a level dependent on your predicted grades.

* Subject to change

Entry requirements

VTQ Pathway

Level 1: 2 GCSEs grade 2 in English and Maths.

An initial assessment will need to be undertaken and an interview conducted to assess suitability for the programme.

Level 2: 4 GCSEs Grade 3 including Maths and English

Level 2 Diploma: 4 GCSEs at Grade 3 plus a grade 4 in maths or English

Level 3: 5 GCSEs at grade 4 or above including English Language and/or Maths (some courses may require both, please check your individual course).

Or a relevant Level 2 related qualification.

T Level Pathway

5 GCSEs at grade 5 or above including English Language and Mathematics.

A successful interview with a tutor. A commitment to undertaking a 45-day industry placement following a successful interview with an employer.

Apprenticeships

Ideally you will possess grade 4 or above in English and Maths; we can offer support if required. Each employer and Standard will have different entry criteria. Check with our Apprenticeships Team for further information.

Thinking about next steps?

You can move on to a higher level apprenticeship, university or employment.

FIND OUT
MORE



Health & Social Care

There are more than 350 different roles in health and social care - from nursing and midwifery, to social work and speech therapy.

Our courses are your first step to working in this rewarding sector. You'll develop the professional skills you need to care for people with compassion and dignity through work experience and employer-led masterclasses. You could then go directly into employment - for example, as a care worker - or use your course as a springboard to further specialist study.

Employer links include:

- NHS
- Walsall Manor Hospital
- Royal College of Nursing
- The Dudley Group NHS



Aspire to be...

There are over 350 different careers in health and social care including:

- Adult or Children's Nurse
- Midwife
- Psychologist
- Counsellor
- Speech Therapist
- Social Worker

Did you know...

1.54 million people work in adult social care in the UK.

You could earn...

£

Midwife
£28,000 - £50,000

Nurse
£28,000 - £43,000

Figures taken from National Careers Service

Choose your pathway

Study Health and Social Care **your** way with one of the following pathways:

VTQ Pathway	T Levels	Apprenticeships
Level 1 Introductory Diploma in Health & Social Care Level 2 Extended Diploma in Health and Social Care Level 3 Extended Diploma in Health & Social Care*	T Level in Health (Adult Nursing/Therapy/Midwifery)	Level 2 Healthcare Support Worker Apprenticeship Standard

Develop professional skills and knowledge

- Understanding human development, anatomy and physiology
- Developing effective communication skills with adults and children
- Supporting people with social activities, eating, mobility and personal care
- Understanding and promoting healthy eating and lifestyles
- Monitoring health and wellbeing
- Ensuring compliance with regulations, policies and procedures

How to apply

Pick the qualification pathway you would like to study, for your chosen subject on our website. During your interview you will be assigned a level dependent on your predicted grades.

Thinking about next steps?

You can move on to a higher level apprenticeship, university or employment.

FIND OUT MORE

Entry requirements

VTQ Pathway

Level 1: 2 GCSEs grades 3 - 1 although students without qualifications may apply.

Level 2: 4 GCSEs at grades 3 - 1 (including a curriculum-related subject), or a Level 1 related qualification. Successful completion of a DBS check.

Level 3: 5 GCSEs at grade 4 or above including English Language/Literature and/or Maths, or a Level 2 related qualification (minimum Extended Diploma) at overall Merit grade.

T Level Pathway

5 GCSEs at grade 4 or above, including Maths, English Language and Combined Science. Successful completion of a DBS check. Full medical history & health assessment with NHS Trust. Evidence of childhood vaccinations to include MMR, Hepatitis A, Hepatitis B & Tetanus.

A successful interview with a tutor. A commitment to undertaking a 45-day industry placement following a successful interview with an employer.

Apprenticeships

Ideally you will possess grade 4 or above in English and Maths; we can offer support if required. Each employer and Standard will have different entry criteria. Check with our Apprenticeships Team for further information.

*subject to change

Pharmacy & Dental

From dispensing medications to helping dentists treat their patients, there are lots of hands-on healthcare roles in pharmacy and dentistry.

These jobs complement other medical professions, ensuring patients get high-quality care that keeps them healthy. You'll learn clinical skills to support your chosen career path - such as measuring and packaging medicines or how to use common dental equipment - and develop knowledge of the human body.



Employer links include:

- Oswyn House Dental Practice
- Church Stretton Dental
- Alpha Pharmacy

Aspire to be...

There are over 350 different careers in pharmacy and dental including:

- Pharmacy Technician
- Pharmacy Assessor
- Clinical Technician
- Dispensing Assistant
- Dental Nurse
- Dental Therapist
- and much more!

Did you know...

There are currently 14,465 dental practices across the UK.

You could earn...

£

Dental Nurse

£23,000 - £35,000

Pharmacy Technician

£35,000 - £69,000

Figures taken from National Careers Service



Apprenticeships

- Level 3 Dental Nurse (Integrated) Apprenticeship Standard
- Level 2 Pharmacy Technician (Integrated) Apprenticeship Standard
- Level 3 Pharmacy Services Assistant Apprenticeship Standard

Develop career-ready skills

Pharmacy

- Dispensing procedures and practices
- The different types of prescriptions
- Doses and forms of medicines
- Issues that may affect how medicines are taken

Dental

- Dental anatomy, respiratory and circulatory systems
- Health promotion and disease prevention
- The transmission of infectious diseases and their prevention
- Dental clinical skills

Entry requirements

Ideally you will possess grade 4 or above in English and Maths; we can offer support if required. Each employer and Standard will have different entry criteria. Check with our Apprenticeships Team for further information.

How to apply

You can view the vacancies we currently have available on our website or submit an enquiry form by scanning the QR codes below.

Thinking about next steps?

You can move on to a higher level apprenticeship, university or employment.



“With an Apprenticeship, you’re immediately gaining the skills and knowledge to carry out a role in the workplace. Plus, this experience helps you move into different industry areas and progress.”

Rahul Kumar
Progression: Drug Administration Pharmacy Technician - Queen Elizabeth Hospital, Birmingham

FIND OUT MORE



Pharmacy Courses



Dental Courses

Engineering Machining and Manufacturing

Whether you're interested in exploring a career as an engineer - or looking to qualify as an engineering machinist - we have lots of courses to get you there.

You'll study relevant engineering skills under the guidance of our expert tutors - such as mechanical and electrical assembly, and producing and understanding technical drawings. You'll also learn how to work safely and professionally in this diverse and lucrative sector.



Employer links include:

- Stenmar Gauge & Model Co Ltd
- Comid Engineering Ltd
- Winward Engineering Ltd

Aspire to be

There are so many careers in engineering machining and manufacturing including:

- Engineering Operative
- Welder
- Mechanical Engineering Technician
- Toolmaker
- Machine Setter

Did you know...

18% of the UK working population work in engineering

You could earn...

£ Manufacturing Systems Engineer
£26,000 - £50,000
Figures taken from National Careers Service

Choose your pathway

Study Engineering Machining and Manufacturing **your** way with one of the following pathways:

VTQ Pathway	T Level	Apprenticeships
Level 1 Engineering Machinist Level 2 Engineering Machinist	T Level Engineering in Maintenance, Installation and Repair for Engineering and Manufacturing	Level 2 Engineering Operative Apprenticeship Standard Level 2 Lean Manufacturing Operative Apprenticeship Standard

Develop in-demand technical skills

- Engineering principles - both mechanical, electrical and electronic
- 3D design and printing
- Machining materials and mechanical assembly
- Hydraulics and pneumatics
- Mathematics for engineering technicians
- Producing engineering drawings
- Carrying out mechanical assembly
- Digital skills including using CAD software, measuring equipment and CNC machines

How to apply

Pick the qualification pathway you would like to study, for your chosen subject on our website. During your interview you will be assigned a level dependent on your predicted grades.

Entry Requirements

VTQ Pathway

- Level 1:** Level 1 in English and Maths preferred and/or GCSE equivalent. An aptitude for physical tasks is also essential for this course along with good dexterity.
- Level 2:** GCSEs at Grade 4 in both Maths and English preferred or a prior qualification in engineering/an engineering-related subject.

T Level Pathway

Grade 5 GCSE in Maths, English Language and Science preferred and at least 3 other GCSEs at Grade 4 and above in relevant subjects. A successful interview with a tutor.

A commitment to undertaking a 45-day industry placement following a successful interview with an employer.

Apprenticeship

Ideally you will possess grade 4 or above in English and Maths; we can offer support if required. Each employer and Standard will have different entry criteria. Check with our Apprenticeships Team for further information.

Thinking about next steps?

You can move on to a higher level apprenticeship, university or employment.



FIND OUT MORE



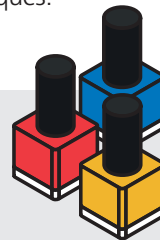
Beauty Therapy

Do you love pampering people and making them feel great about themselves? Studying beauty therapy could be the start of a gorgeous career!

Our state-of-the-art beauty salon and training facilities will teach you skills to become a qualified therapist working in a salon, spa, hotel, cosmetic company, or even on cruise liners. You'll get professional masterclasses with industry experts, plus insights into the latest beauty trends and techniques.

Employer links include:

Glitterbels Fairlawns Glam Ibiza
Rebecca Orme (London Fashion Week)
Hoar Cross Hall Dermalogica



Aspire to be...

There are so many careers in beauty therapy including:

Beauty Therapist Nail Technician
Eyelash Technician
Salon Owner Make-up Artist

Did you know...

In 2023, the UK beauty industry was worth over **£13.4 billion**.

You could earn...

£ Beauty Therapist **£16,000 - £25,000** Nail Technician **£15,500 - £22,000**
Figures taken from National Careers Service



VTQ Pathway

Level 1 Diploma in Beauty Therapy
Level 2 Diploma in Beauty Therapy
Level 3 Diploma in Beauty Therapy
Level 3 Diploma in Nail Technology

Develop salon-ready skills

- Skin care and make-up skills
- Manicures, pedicures and nail art
- Salon reception duties
- Waxing and hair removal
- Eyelash and eyebrow treatments
- Tanning and massage
- Electrotherapy treatments
- Health and Safety
- Sustainability and commercial skills
- Spa treatments

Entry Requirements

Level 1: No formal qualifications required.

Level 2: Minimum of 2 GCSEs at grade 4 or equivalent. This must include English and Maths, or a Level 1 related qualification in Beauty Therapy.

Level 3: Beauty

GCSEs at grades C/GCSE grade 4 or above including English Language, Maths and Science. A Level 2 Beauty Therapy related qualification is required.

Level 3: Nails

Level 2 Diploma in Beauty Therapy/Nail Services. GCSE English and Maths grades 4 or above are desirable.

Thinking about next steps?

You can move on to a higher level apprenticeship, university or employment.



"It is true what people say about college being fun and one of the best times in your life."

Jo Clarke
Level 2 and 3 Beauty Therapy

FIND OUT MORE



Barbering and Hairdressing

Whatever your current level of barbering or hairdressing skill, we can help you build to the next.

You will learn everything you need to become a highly competent haircare professional - specialising in trimming, cutting, colouring and styling hair - as well as male grooming. You'll learn communication and consultation skills, how to market and sell your services, and professional practice including health and safety.



Employer links include:

- Francesco Group
- FG Man
- Wella
- KEM Unisex Salon



Aspire to be...

There are so many careers in barbering and hairdressing including:

- Barber or Hairdresser
- Salon Manager
- Hair Loss Specialist
- Stylist for Film and Photography
- Hair Product Marketer
- and much more!

Did you know...

1 in 50 working people in the UK are employed in the hair and beauty industry.

You could earn...

£

Hairdresser
£19,500 - £30,000

Barber
£19,500 - £30,000

Figures taken from National Careers Service



VTQ Pathway

- Level 1 Hairdressing and Barbering
- Level 2 Barbering
- Level 2 Women's Hairdressing
- Level 3 Barbering
- Level 3 Hairdressing

Develop professional skills

- Customer consultation skills
- How to shampoo, condition and treat the hair and scalp
- Cutting, styling and colouring hair
- Trimming facial hair into shape with shaving services
- Hair extensions, bridal hair and other specialisms
- How to promote and sell products/services
- Professionalism and values
- Safe working practices (health and safety)

Entry requirements

- Level 1:** GCSEs in English and Maths Grade 2 and above.
- Level 2:** Level 1 Hairdressing/Barbering qualification, or prior experience within the industry, plus GCSE English at Grade 4 or above.
- Level 3:** Level 2-related hairdressing qualification or prior experience running a column within the hairdressing industry. 2 GCSEs in English and Maths grades 4 – 9. Practical cut and finish assessment.

Thinking about next steps?

You can move on to a higher level apprenticeship, university or employment.



"Through college, I took part in and became an industry competition winner; a huge achievement that I know helps me stand out as I turn fully professional."

Jack Bradshaw
Level 2 and 3 Barbering

FIND OUT MORE



Cookery and Catering

If you love creating meals and cooking food - or enjoy hosting customers and making them happy - our cookery and catering courses are for you.

Whether you have some experience or are new to the sector, you'll build on your current knowledge and grow into a capable food service professional. From the basics of cookery - to advanced techniques used by top chefs - your skills will soon be sharper than your kitchen knives.

Employer links include:

- Hundred House Hotel
- Quorn Foods
- Fairlawns Hotel and Spa
- Dunstall Park
- Walsall Council
- The Boat Inn
- The Manor House
- Henry Tudor House Shrewsbury



Aspire to be...

Culinary skills can lead to lots of careers including:

- Events Caterer
- Recipe Developer
- Chef (executive, private, pastry, sous etc)
- Food Writer
- Food Stylist
- and much more!

Did you know...

At the end of 2023 there were 112,000 vacancies in hospitality.

You could earn...

£

Chef
£22,000 - £40,000

Catering Manager
£20,000 - £34,000

Figures taken from National Careers Service



VTQ Pathway

- Level 1 Introductory Certificate in Hospitality (Culinary Skills)
- Level 2 Diploma in Patisserie and Confectionary
- Level 2 Technical Certificate in Professional Cookery
- Level 3 Advanced Diploma for Professional Chefs (Kitchen & Larder)

Develop kitchen-ready culinary skills

- Preparing and cooking food
- Cooking techniques (boiling, poaching, steaming, stewing, braising, baking, roasting, grilling, frying)
- Producing professional quality dishes (vegetarian, meat, poultry, game, fish, shellfish, desserts)
- Serving food and drink and delivering customer service
- Promoting and running a hospitality event
- How to use different knives, tools and equipment
- How to organise yourself as a chef, working safely and hygienically

Entry requirements

- Level 1: No formal qualifications are required.
- Level 2: 4 GCSEs at grades 3-1. A curriculum related qualification.
- Level 3: 4 GCSEs at grades 3-1, relevant Level 2 qualification and previous industry experience.

Thinking about next steps?

You can move on to a higher level apprenticeship, university or employment.



"You don't just learn the kitchen basics, you learn specialist skills so that you can be flexible about where to take your career."

Freddie Coulter
Progression: Commis-chef at The Trooper

FIND OUT MORE



Hospitality and Events Supervisory



Hospitality combines customer service, supervisory skills and creativity to give guests an unforgettable experience.

With opportunities to plan a dining experience and hold a personal/corporate event, you'll share your creativity, innovation and high quality service values, all underpinned with involvement from employer clients.



Employer links include:

- Fairlawns Hotel and Spa
- Dunstall Park
- Walsall Council
- The Boat Inn
- The Manor House
- Quorn Foods

Aspire to be...

There are so many careers in hospitality and events management including:

- Accommodation Manager
- Event Manager
- Wedding Planner
- Restaurant, Hotel or Pub Manager

Did you know...

Hospitality makes up **6.9% of all UK employment.**

You could earn...

£

Events Manager
£21,000 - £40,000

Catering Manager
£20,000 - £34,000

Figures taken from National Careers Service



VTQ Pathway

Level 3 Extended Diploma in Hospitality with Events

Develop professional skills

- Serving food and drink - including preparing alcoholic drinks, barista skills and more
- Personal professional development
- Human resources in hospitality
- Personal selling and promotional skills
- Organise and planning events
- Marketing for hospitality and events
- Customer service skills

Entry requirements

Level 3: 5 GCSEs at grade 4 or above including English Language and/or Maths. Or a Level 2 related qualification.

Thinking about next steps?

You can move on to a higher level apprenticeship, university or employment.



FIND OUT MORE



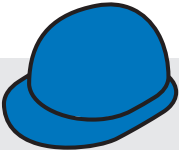
Protective Services

If you want a career protecting your community - or your country - our protective services courses are ideal.

They're for people who want to work for the armed forces, police, fire or prison services. You'll develop essential fitness, teamwork and leadership skills for success in your chosen area. And through our industry links, get to talk to professionals in the sector and discover the skills you'll need to join them.

Employer links include:

- British Army
- Royal Navy
- Birmingham Airport
- West Midlands Police
- Counter Terrorism Units
- West Midlands Fire Service
- HMS Prisons
- Royal Air Force



Aspire to be...

There are so many careers in protective services including:

- The Armed Forces
- Police Service
- Prison Service
- Security Sector
- Revenues and Customs
- Fire Service

Did you know...

There's a **13% skills shortage** in protective services

You could earn...

£

Police Officer
£28,000 - £44,000

Firefighter
£28,000 - £42,000

Figures taken from National Careers Service



VTQ Pathway

- Level 1 Public Services
- Level 2 Public Services
- Level 3 Uniformed Protective Services

Develop professional skills

- Essential wellbeing and physical fitness
- Dealing with public service incidents
- Responding to emergency service incidents
- Assisting the public
- Expedition skills (through outdoor and adventurous activities)
- Planning and participating in events
- Aspects of the legal system and current affairs
- Understanding crime and its effects
- Teamwork, leadership and communication
- Behaviour and discipline
- Security work and procedures

Entry requirements

- Level 1:** No formal entry requirements.
- Level 2:** 4 GCSEs at grade 3 (including a curriculum related subject), or a Level 1 related qualification.
- Level 3:** 4 GCSEs at grade 4 or above including English Language and/or Maths, or a Level 2 related qualification with a final grade of at least a Merit.

Thinking about next steps?

You can move on to a higher level apprenticeship, university or employment.



"My course was ideal preparation for the Royal Navy in terms of developing leadership and communication skills, plus fitness endurance."

Elliot Sutton
Progression: AB2 Royal Navy seaman

FIND OUT MORE



Science

If you'd like to study science at university - or want a stepping stone to a scientific career - our courses will give you the knowledge and practical skills to succeed.

Depending on your chosen course, you'll immerse yourself in fascinating topics such as microbiology, organic chemistry and astrophysics. You'll get hands-on in our high-spec labs, learning practical techniques and conducting your own experiments - and explore different career options.



Employer links include:

- Aston University
- Birmingham City University

Aspire to be...

Science skills can lead to fascinating careers in:

- Forensic Science
- Pharmacy
- Environment and Manufacturing
- Biomedical Science and Genetics
- Industry and Technology

Did you know...

Global health and life science is predicted to grow up to 10% per year

You could earn...

£

Clinical Scientist
£35,000 - £68,000

Biochemist
£24,000 - £50,000

Figures taken from National Careers Service

Choose your pathway

Study Science **your** way with one of the following pathways:

VTQ Pathway	A Level Pathway
Level 2 BTEC Diploma in Applied Science Level 3 BTEC National Extended Diploma in Applied Science	A Level Physics and A Level Maths combined with BTEC Level 3 Extended Certificate Applied Science A Level Biology and A Level Chemistry combined with BTEC Level 3 Extended Certificate Applied Science A Level Environmental Science*

Develop scientific skills and knowledge

- Understanding the fundamentals of science
- Scientific investigation and practical skills
- Maths and statistics for science
- Physiology of the human body
- Organic and inorganic chemistry
- Biochemistry and biochemical techniques
- Scientific techniques in microbiology, medical physics and more
- Digital skills for research, recording data, and communication
- Particles and radiation
- Astrophysics and many more

*Your exact topics and skills will depend on the course and level you choose. See our website full listing of modules.

Entry requirements

VTQ Pathway

Level 2: Grade 3 in GCSE Maths and English preferred or a minimum of Level 1 Initial assessment in Maths & English.

Level 3: Ideally 5 GCSEs at grade 4 including Maths, English and a Science qualification. A previous Level 2-related qualification or higher GCSE results may allow direct entry to this course.

A Level Pathway

English and Maths at grades 5-9 and a Science GCSE at grades 6-9. Additional GCSE results at grades 5-9 will be an advantage.

How to apply

Pick the qualification pathway you would like to study, for your chosen subject on our website. During your interview you will be assigned a level dependent on your predicted grades.

Thinking about next steps?

You can move on to a higher level apprenticeship, university or employment.



FIND OUT MORE



Sport & Fitness

Indulge your brain AND body with a sport and fitness course.

You'll learn about the human body, nutrition, physiology and psychology from industry experts. Plus develop your physical fitness, use our gym, and participate in sports tournaments. You'll visit different sports grounds and get inspiration from sector professionals, thanks to our links with leading sports clubs. Your future career could be in education, the NHS, self-employment, at a sports club or governing body.



Employer links include:

- Walsall Football Club
- Aston Villa Football Club
- Inspire
- Streetly Tennis Club

Aspire to be...

There are so many careers in sport and fitness including:

- Fitness Instructor/Personal Trainer
- Sports and Exercise Psychologist
- Sports Centre Manager
- Professional Athlete
- Sports Coach

Did you know...

The sport and fitness sector is growing!

You could earn...

- £ PE Teacher
£30,000 - £47,000
- Sports Physiotherapist
£28,000 - £50,000
- Figures taken from National Careers Service



VTQ Pathway

- Level 1 Diploma in Active Sport and Leisure
- Level 2 Foundations of Strength and Conditioning for Sports Fitness/Player Development
- Level 3 Diploma in Personal Training
- Level 3 Extended Diploma in Sport Development

Entry requirements

- Level 1: Entry Level 3 in English and Maths.
- Level 2: 4 GCSEs grade 3 and above including Maths and English.
- Level 3: 4 GCSEs at grades 4 or above including English Language and Maths. If you have studied BTEC Level 2 in Sport you must achieve Merit grade or above.

Develop professional skills

- Experience of different sports and exercise activities
- Understanding anatomy, physiology, nutrition, and sports psychology
- Planning fitness programmes and preparing goals
- Promoting health and fitness for wellness
- Sports coaching skills
- Officiating skills including rules and regulations
- Understanding the healthcare systems and exercise referral process
- Skills for self-employment

Thinking about next steps?

You can move on to a higher level apprenticeship, university or employment.



"My success has been because of my college network of lecturers and friends plus the freedom to find my own way."

Rhys Humphries
Progression: BSc Sports & Exercise Science - Birmingham Newman University

FIND OUT MORE



Supported Learning



FIND OUT MORE

At Walsall College, we passionately believe that education should be available for everyone who can benefit from it.

Our programmes lead towards progression on to cross college courses, independent living or a Supported Internship.



Employer links include:

- Birmingham FA
- Dunelm
- Walsall Leather Museum
- MLSS Gym
- The Co-operative
- Ninja Warrior UK

Supported Learning Pathways

Preparation for Adulthood

- Entry Level 1 Life Skills
- Entry Level 2 Skills for Independence

Employability

- Entry Level 2 Skills for Progression
- Entry Level 3 Skills for Employment
- Supported Internship

Vocational

- Level 1 Art & Design
- Level 1 Performing Arts
- Level 1 Media
- Level 1 Sport Academy
- Level 1 Catering

Preparation for Adulthood Pathway

Entry Level 1 Life Skills

Duration: 1 year
Location: Wisemore Campus or Hawbush Campus
Entry Requirements: This course is suitable for students aged 16-25 who have an Education Health and Care Plan. While you will not need any formal qualifications, you will need to attend an assessment and interview with our Supported Learning tutors.

Ideal for: This programme is ideal for SEND students with complex to moderate LDD. The course aims to improve students' 'life skills'.

The aim of the course is to help students develop a range of life skills and become more independent at home and at college.

A possible 3 years on the course, students will work towards an Entry Level 1 qualification.

You'll learn: skills which are needed in daily life such as basic food preparation, personal safety and communication skills.

Expect: to learn in a variety of settings including the local community.

You'll love: the practical activities which will support you to improve a wide range of skills.

What's next? You may be able to progress to higher level courses within Supported Learning.

Entry Level 2 Skills for Independence

Duration: 1 year
Location: Wisemore Campus or Hawbush Campus
Entry Requirements: This course is suitable for students aged 16-25 who have an Education Health and Care Plan. While you will not need any formal qualifications, you will need to attend an assessment and interview with our Supported Learning tutors.

Students aged 16-18 who do not have an EHCP but require this course to improve specific skills or students aged 19+ who do not have an EHCP may be suitable but will be assessed on an individual basis.

Ideal for: students who want to improve their ability to live more independently by developing independence skills, including accessing different campuses at Walsall College.

You'll learn: about shopping and basic food preparation, personal safety, community participation and safety in the home.

Expect: individual and group activities, real life scenarios and practical, written and verbal assessments.

You'll love: the opportunity to develop independent living skills in a community based venue.

What's next? There may be possible progression options to higher level courses within Supported Learning, based on your interests/skills.

Other routes include voluntary and/or paid employment.

Support we offer:

- Support from highly skilled learning mentors
- One-to-one and small group support
- Support in class and lunch/break times
- Transport meet and greet
- Specialist dyslexia support
- Specialist Language Support
- Educational Interpreters and Notetakers
- Support for personal care needs
- Pastoral Support (behaviour and welfare support).

Supported Learning

Employability Pathway

Skills for Progression Entry Level 2

Duration: Up to 2 years
Location: Wisemore Campus or Hawbush Campus
Entry Requirements: You will not need any formal qualifications. You will need to attend an assessment and interview with Supported Learning tutors.

Ideal for: This course is designed to help students with learning difficulties and/or disabilities progress from a school to college environment, improving skills in English, Maths, digital skills, promoting good health and wellbeing and personal development. It allows for different vocational areas to be experienced, helping students to choose their future employment or college progression.

You'll learn: practical skills in a range of subjects such as catering, care, motor vehicle, art and design, performing arts, media, sports and gardening.

Expect: to study Functional Skills in Maths, English and ICT as part of this course.

You'll love: the support you'll get from tutors and the chance to meet new people and make friends.

What's next? Progress onto higher level courses within Supported Learning/cross college, based on your interests and skills. Other routes include social services provision, voluntary and/or paid employment.

Employability Pathway

Skills for Employment Entry Level 3

Duration: 1 year
Location: Wisemore Campus
Entry Requirements: You won't need any formal qualifications however you should be working at Entry Level 2 to Entry Level 3, and be able to independently access a work placement with minimal support. Suitability to the course will be assessed by a course tutor.

Ideal for: Students who want to gain the foundation skills required in the workplace to help you get a job.

You'll learn: about dealing with problems in daily life, preparing for work and exploring job opportunities available to you.

Expect: to study Functional Skills in English, Maths and ICT with exam based assessments.

You'll love: the chance to gain real life work experience with a local employer.

What's next? Supported Internship, a cross college vocational course, paid or voluntary employment.

Employability Pathway

Supported Internship

Duration: 1 year
Location: Wisemore Campus
Entry Requirements: You won't need any formal qualifications however you should be working at Entry Level 3 to Level 1, and be able to independently access a work placement with minimal support. Suitability to the course will be assessed by a course tutor.

Ideal for: 16 to 24-year-olds with SEND, who have an education, health and care (EHC) plan. The core aim of a Supported Internship study programme is a substantial work placement, facilitated by the support of an expert job coach. This course is all about getting students work ready, building on their vocational skills and improving their employability skills and confidence. It's also ideal for students with SEND who, with the right level of guidance and support, are ready and prepared to learn skills to make the step into employment.

You'll learn: skills which will help you to gain and maintain employment, whilst also learning on the job skills through your Internship placement.

Expect: to develop your employability skills during an internship with a local employer and study English and Maths.

You'll love: the support you'll get from tutors during your placement to help you get the most out of your experience.

What's next? Progress on to an Apprenticeship or employment based on your interests and skills.

Vocational Pathway

Level 1 in Art & Design

Duration: 1 year
Location: Wisemore Campus
Entry Requirements: You will not need any formal qualifications. You will need to attend an assessment and interview with Supported Learning tutors.

Ideal for: Those who want to develop your creativity by exploring a variety of art and design techniques and gain more confidence in applying these skills.

You'll learn: different art and design methods including painting and drawing, 3D design, photography, computer generated graphics, textiles and printmaking.

Expect: to work on personal projects and build up your own portfolio of artwork.

You'll love: field trips to local art galleries and museums.

What's next? Level 2 cross college courses, Supported Internship, Apprenticeship, employment.

Supported Learning

Vocational Pathway

Level 1 Performing Arts

Duration: 1 year
Location: Wisemore Campus
Entry Requirements: You will not need any formal qualifications. You will need to attend an assessment and interview with Supported Learning tutors.
Ideal for: Students who want to develop your confidence and communication skills by exploring a variety of different performing arts techniques.
You'll learn: a range of practical performance skills including acting, dancing and music, as well as social skills and health and safety knowledge.
Expect: individual and group activities, real life scenarios and practical, written and verbal assessments.
You'll love: performing on stage during various productions.
What's next? Level 2 cross college courses, Supported Internship, Apprenticeship, employment.

Vocational Pathway

Level 1 Media

Duration: 1 year
Location: Wisemore Campus
Entry Requirements: You will not need any formal qualifications. You will need to attend an assessment and interview with Supported Learning tutors.
Ideal for: Students who have a keen interest in video and audio production and want to improve your media skills within a supported learning environment.
You'll learn: about the media industry and aspects of video and audio production, including film making.
Expect: to work on a variety of projects which will allow you to explore different media techniques.
You'll love: working on live projects which will allow you to improve your media skills.
What's next? Level 2 cross college courses, Supported Internship, Apprenticeship, employment.

Vocational Pathway

Level 1 Sport Academy

Duration: 1 year
Location: Wisemore Campus
Entry Requirements: You will not need any formal qualifications. You will need to attend an assessment and interview with Supported Learning tutors.
Ideal for: Students who have a keen interest in sports, and if you have a learning difficulty or need to improve your English and Maths skills to support you to progress.
You'll learn: the skills to participate and coach a wide range of sports through practical and theory sessions.
Expect: opportunities to compete regionally in a range of sports. You can expect to be part of the Supported Learning Football Team who compete on a regional and national level.
You'll love: the range of practical sports activities available to students.
What's next? Level 2 cross college courses, Supported Internship, Apprenticeship, employment.

Vocational Pathway

Level 1 Catering

Duration: 1 year
Location: Wisemore Campus
Entry Requirements: You will not need any formal qualifications. You will need to attend an assessment and interview with Supported Learning tutors.
Ideal for: Students who have an interest in cooking and want to learn the skills you need to work in the hospitality and catering sector.
You'll learn: about a range of practical food preparation and production skills and food hygiene.
Expect: to study Functional Skills in Maths, English and ICT as part of this course.
You'll love: working in industry standard kitchens and opportunities for work experience in a range of settings.
What's next? Level 2 cross college courses, Supported Internship, Apprenticeship, employment.

We offer English for Speakers of Other Languages (ESOL) for 16-19 year olds.

ESOL (16-19)

English for Speakers of other Languages

Duration: 1 year
Location: Wisemore Campus
Entry Requirements: No formal qualifications are required.
Ideal for: Students if English is your second language.
You'll learn: how to communicate effectively in the English Language.
Expect: the opportunity to develop your reading, writing and speaking and listening skills, alongside planning for your chosen career goals and the steps required to reach these goals
You'll love: the opportunity to develop independent English skills which will support you in gaining access to the vocational programme of your choice.
What's next? Level 2 cross college courses, Supported Internship, Apprenticeship, employment.

What people say about us



"Thanks to the support of the tutors over the entire six years, I am more confident within myself as a person as well as my chosen career path. Thank you Walsall College."

Tommie



"Walsall College is a great place to learn. It's an environment where you are supported and guided to the best form of success. The tutors are very knowledgeable and there is a great balance where you can bounce ideas off a mixture of talents."

James



"I appreciate the help, support and guidance that I received, I hope the College know that I am thankful for everything they have done for me. I learned a lot and gained great grades."

Shanice



"I am so happy that I chose to go to college, especially Walsall College, life at Walsall College is helping me to figure out the right career path that I should take."

Chloe



"My experience has been the best, I have gained new skills from attending work placement and have enjoyed it very much. Staff and students are all polite and treat each other with respect. I have made many friends that will stick by me and hopefully be by my side for life."

Sophie



"Such a pleasant experience, the staff were professional and really helpful throughout the process. I recommend the institution to anyone looking to progress in their career or better their lives."

Bianca

Disclaimer

Our prospectus and college documents are simply here to offer a guide. We accept no liability for any inaccurate statements and are not responsible for any negative outcomes if you rely on an inaccurate statement. When you sign forms and accept a place at the College, you agree to abide by College rules and any changes made to them, and accept that we have the right to reject applicants. You also accept that there are certain circumstances that could prevent us from providing some services or programmes. These are: low class numbers; severe weather conditions; severe damage to buildings; circumstances which may affect the health and safety of staff and/or students, or any other relevant circumstances outside the reasonable control of the College. In these cases, we reserve the right to withdraw any programmes or service. If we close the course within four weeks of the start date, we will give you a full refund.

Privacy Notice

Walsall College collects and processes personal data relating to potential learners to manage effectively the administration of their education and to meet its statutory obligations as part of the College's public task. Walsall College is committed to being transparent about the data it collects and uses that data lawfully in line with its data protection obligation. For our full privacy notice, please see the Walsall College website.

Your personal information may be shared with third parties for education, training, employment and well-being purposes, including for research. This will only take place where the law allows it and the sharing is in compliance with data protection legislation. For further information on which organisations we regularly share personal data with, please read our full privacy notice on the Walsall College website.

Sustainability

This publication has been produced using carbon balanced material. All paper used was a mix of materials from Forestry Stewardship Council certified forests.

USEFUL CONTACTS

Course advice

Our impartial Information, Advice & Guidance Team are here to discuss the best options available to you. Contact our Student Services team to discuss your options on **01922 657000**.

Financial advice

- To find out what financial help may be available to you. Talk to our Information, Advice & Guidance Team on **01922 657000**
- Find out more at: **www.studentfinancedirect.co.uk**

Stay safe

- If you're worried for yourself or someone else, contact us at: **safeguardingteam@walsallcollege.ac.uk**

Students with disabilities

- Apply for Disabled Students Allowance (DSA) at: **www.gov.uk/disabled-students-allowances-dsas/overview**
- Talk in confidence to our Inclusive Support Team on **01922 657093** or **01922 688536**
- For interpreting support for deaf students, contact **01922 657000**.

Students' Union

- Find out more at: **www.walsallcollege.ac.uk** or email **studentsunion@walsallcollege.ac.uk**

Apprenticeships

- Find out more at: **www.walsallcollege.ac.uk/apprenticeships** or call **01922 651129**

Get social with us...

Stay in touch and keep up-to-date with all our latest news, events and student success stories. Follow us on our socials to check out what life at Walsall College is like.

Find us at:



walsall_college



/walsallcollege



@walsallcollege



Walsall College

If you need help accessing this prospectus or would like it in another format e.g. braille, widget or audio, please contact us on **01922 657000**.
Deaf Users Minicom: **01922 657064**.



OPEN DAYS

Thursday 10th October 2024

4pm - 8pm

Tuesday 26th November 2024

4pm - 8pm

Saturday 25th January 2025

10am - 2pm

Wednesday 26th March 2025

4pm - 7pm

Saturday 21st June 2025

10am - 2pm



01922 657000

www.walsallcollege.ac.uk



walsall_college



@walsallcollege



/walsallcollege



Walsall College