

walsallcollege.ac.uk

2024/2025

 Walsall College

# DISCOVER YOUR POTENTIAL

**School Leavers' Course Guide**



A Levels • T Levels • Apprenticeships • Vocational Technical Qualifications



# Welcome

**Welcome to Walsall College – one of the most successful colleges in the country. We are here to help you develop your skills and gain the qualifications that employers want. Whether your goal is to prepare for higher education or to head into the world of work, we are certain that you will discover your potential with us.**

By joining us, you will belong to a college highly regarded for our teaching and learning, state-of-the-art facilities, support services and success rates. Our wide range of Vocational Technical Qualifications (VTQs), T Levels, A Levels and Apprenticeships will provide the opportunity for you to start your journey to success. If you are coming to college to follow your ambition or to nurture your passion, we are sure that you will be inspired to learn and achieve with us.

If university is your goal, then you're in the right place. In fact, over 500 of our full-time students go to university every year.

Jatinder Sharma CBE DL - Principal & Chief Executive

Many students also choose to stay here to study for their degree, where they benefit from smaller class sizes, one-to-one support and significantly lower fees compared to traditional universities.

We are working with more employers than ever before to ensure you get access to real work experience and a chance to showcase your skills on live industry briefs; giving you a competitive edge when you apply for jobs or university places.

Walsall College is also a place to make friends and become part of the local community. Our Students' Union team will help you settle into college life, organising social activities and events to ensure you make the most of your time with us.

We are not just an exceptional college, we are a vibrant and safe place to study, where everyone is welcome and supported. That's why employers and our community partners have such high praise for our students.

We hope that you find the course you are looking for and our passionate staff will provide you with all the support you need to achieve your goals. We look forward to welcoming you to Walsall College.

Image taken by Valerie Woolford for the Black Country Chamber of Commerce. Used with permission.

# What's Inside

<p>▶▶▶</p> <p><b>Welcome to Walsall College</b> Page 1-27</p>	<p>▶▶▶</p> <p><b>Achieving Together</b> Page 28-29</p>	<p>▶▶▶</p> <p><b>Aviation Operations, Travel &amp; Tourism</b> Page 30-31</p>	<p>▶▶▶</p> <p><b>Automotive</b> Page 32-33</p>
<p>▶▶▶</p> <p><b>Business, Finance and Law</b> Page 34-41</p>	<p>▶▶▶</p> <p><b>Early Years and Health &amp; Social Care</b> Page 42-47</p>	<p>▶▶▶</p> <p><b>Computing</b> Page 48-49</p>	<p>▶▶▶</p> <p><b>Construction Trades/Services</b> Page 50-67</p>
<p>▶▶▶</p> <p><b>Creative</b> Page 68-83</p>	<p>▶▶▶</p> <p><b>Engineering</b> Page 84-85</p>	<p>▶▶▶</p> <p><b>Hair, Barbering and Beauty</b> Page 86-89</p>	<p>▶▶▶</p> <p><b>Hospitality, Events and Cookery</b> Page 90-93</p>
<p>▶▶▶</p> <p><b>Protective Services</b> Page 94-95</p>	<p>▶▶▶</p> <p><b>Science</b> Page 96-97</p>	<p>▶▶▶</p> <p><b>Sports</b> Page 98-99</p>	<p>▶▶▶</p> <p><b>Supported Learning</b> Page 100-105</p>

# Did you know...

**FREE BUS PASS**  
Available to full time students  
\*subject to eligibility



**FANCY A CUPPA**  
We have an onsite Starbucks



**ENGLISH & MATHS**  
are an important part of our study programmes

**FREE WI-FI ON CAMPUS**



**DISCOUNTED ACCESS TO OUR ON SITE GYM**

Students get a **FREE BREAKFAST**  
\*between 8.00am and 10.00am

**YOU CAN STUDY UP TO DEGREE LEVEL WITH US**

**WE WORK WITH OVER 700 APPRENTICE EMPLOYERS**

**WE HAVE THE BIGGEST SIXTH FORM IN WALSALL**

**98% OF OUR STUDENTS** feel safe when in College  
FE Teaching and Learning Survey 22/23

**95% OF OUR STUDENTS** would recommend us to others  
FE Teaching and Learning Survey 22/23

**#1 FAN**

**WE HAVE THE BIGGEST SIXTH FORM IN WALSALL**

**CASHLESS**  
Your ID card is a Smart Card. It can be pre-loaded with money to use at the College tills



**WE ARE ONE OF THE LARGEST PROVIDERS** of 16-18 Apprenticeship Training in the West Midlands

**WE WORK WITH OVER 700 APPRENTICE EMPLOYERS**

**COLLEGE BURSARIES AVAILABLE** for equipment and childcare  
\*subject to eligibility

# Discover your path

Discover your potential with our wide range of courses. Most subjects are available in different pathways. Here's what you need to know about them:

## Helping you to find the right route

It can be hard knowing which route or level is right for you. At Walsall College, we get rid of the guesswork so you'll know you're on the right path.

- You'll apply to study your chosen subject and be invited for an interview with one of our friendly tutors.
- They'll ask you about your ambitions and experience, then recommend which pathway will work best for you.
- You start your course with confidence, knowing you're on the right path to achieve your goals.

Maths and English are essential for success - both at work and in life. If you have already achieved grade 4s in these subjects, you will have chance to develop your knowledge as part of your course. If you haven't achieved grade 4s yet, we'll help to get you there.



### Vocational Technical Qualifications (VTQ)



#### What is a VTQ?

- A VTQ focuses on practical career skills and comes in different levels depending on your experience.
- Level 3 Extended Diplomas are equivalent to three A Levels.
- You'll gain real-world skills and get some work experience.
- You'll be assessed through practical sessions and coursework.

#### Ideal if...

- You want work-ready skills for a specific sector - like automotive or health.
- You learn best through hands-on experience.
- You love putting theory into practice.
- You want to progress to work or further study.



### T-LEVELS THE NEXT LEVEL QUALIFICATION



#### What is a T Level?

- T Levels are courses that focus on one specific career path for two years.
- One T Level is equivalent to three A Levels.
- You spend 80% of your time studying and 20% of your time on an industry placement with an employer. Here you will gain experience working in your chosen industry.

#### Ideal if...

- You want to progress to work or further study.
- You know what career you want to do.
- You enjoy learning theories and ideas but want to get lots of practical hands-on work experience.



### Apprenticeships



#### What is an Apprenticeship?

- An Apprenticeship lets you learn while you earn.
- You spend six hours a week in the classroom and the rest in a sector/role of interest.
- You'll be assessed on your progress in both work and study.

#### Ideal if...

- You know what career you want to do.
- You want to learn on the job more than in the classroom.
- But you still want to support your work experience with professional knowledge.
- You want to earn a wage while you study.



### A Levels



#### What are A Levels?

- Our A Level pathways are designed using complementary subjects to give you a broader understanding of industries.
- Most of our A Level pathways are delivered alongside a technical qualification allowing you to get some practical experience.
- You'll be assessed with exams and some coursework.
- You'll get some work experience but will mostly study in the classroom.

#### Ideal if...

- You learn best through reading and studying.
- You're good at exams.
- You like theories and ideas.
- You want to study an academic subject at university.





# Get ahead with work experience

Whatever you're studying, you'll get work experience to boost your career confidence and credentials. You'll learn to apply your new knowledge and skills in a real-life work environment.

## How much work experience will I get?

<p>▶▶▶ <b>VTQ</b></p> <p>Your course is based on developing real-world practical skills. You'll get 36 hours of work-related activities including work placements, employer visits and projects.</p>	<p>▶▶▶ <b>T Level</b></p> <p>You spend 80% of your time studying and 20% of your time on an industry placement with an employer. That's 315 hours of work experience - equivalent to 45 days.</p>	<p>▶▶▶ <b>Apprenticeship</b></p> <p>Take on a paid job where you spend 6 hours a week in the classroom and the rest in a sector/role of interest.</p>	<p>▶▶▶ <b>A Level</b></p> <p>You will cover elements of preparation for the world of work which will include trips to employers places of work and projects.</p>
--	---	---	--

### Why do work experience?

					
Real-life experience of your chosen career	Helps narrow down what you'd like to do	Boosts your CV with skills and experience	Gives you contacts in the workplace	Puts your theory into practice	Increases your confidence

## What support will I get?

You'll get support to

- Find and apply for work experience with our wide range of employer partners
- Support during your placement - to make sure it's going well
- Support after your placement - to help you apply what you've learned

## Our work experience partners include



*"Work placements allow us to show students our working practices, and in turn give us insight into the future talent pool."*

**Daniel Aston**  
Human Resources Coordinator,  
Access Bookings



## Get the Walsall College graduate advantage

Your qualifications will take you far. But your attitude will take you further. Wherever you want to go in life, Walsall College is a great place to start.

**As a Walsall College graduate you'll be:**

### Skilled

You'll have the industry skills, knowledge and experience to thrive in the workplace, from day one of employment.

### Professional

You'll be job ready, with bags of initiative, communication skills and the ability to work well as part of a team.

### Enterprising

You'll be resourceful, adaptable to the changing needs of business, and able to innovate.

**See course pages to discover where our graduates work now.**

# Working with parents



The college helped my child realise their dream. The teachers filled her with confidence and the belief that anything is possible.

The support and encouragement you give your child at home can make a big difference to their success at college.

## Parents' role

### Encourage your child

to complete homework on time. It's set regularly and is essential to their independent learning.

### Make sure they attend regularly

Missing coursework deadlines or exams can really affect your child's chances of success. If they are ill, please call or email their personal tutor.

### Remind them to look after their belongings

and leave expensive equipment at home. It may cost you a lot of money to replace items.

### Talk to us

Come along to our parents' evenings so that we can chat about your child's progress.

## Our role

### Expect regular updates

We'll keep you informed about your child's behaviour, homework, exams, assessments, successes and areas for improvement. You'll get a termly report card, as well as an invitation to parents' evenings.

### Personal guidance and support for your child

Each child has a personal tutor who is responsible for their care, progress and achievement. They're always on hand to help them reach their full potential - and help with any difficulties.



**Want to know more?**

Scan the QR code

## Choose the best for your child

You want the best for your child and so do we. Here's what they'll get when they study at Walsall College.

### A route to university

Aspire to university? A Level 3 vocational technical qualification - like a BTEC or T Level - is equivalent to three A Levels. Most universities accept these for entry to their degrees\*. Your child can also study to degree-level at Walsall College at a fraction of the cost of university.

### A springboard into employment

Want to get to work? Vocational technical qualifications provide a firm foundation for employment. For some careers, they're preferred. They'll equip your child with the skills, knowledge and confidence to pursue their chosen career. You can also rely on award-winning career guidance to help them find and apply for jobs.

### Worthwhile work experience

Your child can boost their prospects with real-life work experience. We'll help them find - and support them to succeed in - an industry placement with one of our employer partners - from the police and NHS to big names in business and industry. See more on page 6-7.

### Essential Maths and English

Maths and English are essential in everyday life and work, so all students aged 16-18 will study English and Maths as part of their course. And if your child obtained a grade 3 on their English or Maths GCSE, we'll help them work towards a grade 4.

### Support at every step

Our doors are always open. If your child has a problem with their academic or personal life, or emotional wellbeing, our pastoral team can help. We also provide careers support.

### A safe place to study

Your child will feel safe at college. All students sign a behaviour agreement and we have a disciplinary system for any breaches. We also have a safeguarding policy that you can view on our website.

\*If in doubt, check out entry requirements for specific degrees on their preferred universities' websites

# Your support at College

During your studies, you'll be challenged in lots of good ways - learning and growing into the new you. But sometimes you might face things you need help with. When you do, we're here for you 100%.



## Careers guidance

Your dream job is closer than ever thanks to support from our award-winning Careers Guidance Team. Explore your higher education and employment options and get help in applying for part-time jobs.



## Support with money

If you're under 19, our courses are free. But if you're struggling with other costs - like travel, equipment and exams - you might be able to get financial help. Just talk to our Customer Service Team for advice.



## Somewhere to study

Not everyone has a quiet place to study at home. If you need room to think, our Learning Resources Centre has everything you need - thousands of books, magazines and digital resources, computers, study areas, and fantastic staff to help you find what you need.



## Free Counselling

If things are getting on top of you, you can get free personal counselling to talk things through. You can also chat with a Pastoral Support Officer for help with social and personal issues.

## It starts with you.

At Walsall College, everyone is treated with respect and expected to adhere to our Ready, Respect, Safe agreement at all times.

- **Ready** - To learn
- **Respect** - Each other and the environment
- **Safe** - Keep yourself and others safe



## Support for Special Educational Needs and/or Disabilities

Whatever your needs, you'll be supported to achieve your full potential across all study programmes and all of our campuses. We welcome students with a wide range of additional needs including:

- Autism spectrum disorder
- Physical disabilities
- Hearing impairment
- Visual impairment
- Learning difficulties/specific learning difficulties
- Mental health conditions
- Medical conditions

### Support available

- Support from our highly skilled Learning Mentors
- One-to-one and small group support
- Support in class and at break/lunch times
- Transport meet and greet
- One-to-one assignment support sessions
- Specialist dyslexia support
- Examination access arrangements assessments
- Specialist Language Support
- Educational Interpreters and Notetakers

### Supported Learning Provision

We have a range of programmes within our Supported Learning Provision from Pre-Entry to Level 1 that cater specifically for individuals aged 16 years to adults with additional needs. See page 102 for more details.

These courses are designed to prepare students for adulthood - and to promote independence, personal and social development. Our specialist tutors and support staff work with smaller groups to help everyone achieve their potential.

### Help us plan your support

If you (or your child) have additional needs, let us know so we can support you appropriately. We want to make sure you're supported from the start. We'll put an individual support plan in place to support your college journey - so you can achieve your personal potential and goals.

### Education, Health and Care Plan

If you are aged 16-25 years and have an Education, Health and Care Plan please let us know on your application form. A formal consultation with your Local Authority and the college will then take place. Alongside this we may also invite you in to complete a curriculum interview and needs assessment with our Inclusive Support Team.

### Your future

Our students achieve their qualifications and build on their holistic skills. They progress onto higher level courses, into employment/voluntary work, and both supported and independent living.

Please contact us at [inclusivesupport@walsallcollege.ac.uk](mailto:inclusivesupport@walsallcollege.ac.uk) if you have any queries.



**Want to know more?**  
Scan the QR code



**Check out  
our 360° tour**  
Scan the QR code

# Fantastic facilities, fantastic prospects

Step into our campuses for the first time and you'll be impressed. We've invested millions in our campuses to give you the very best equipment and facilities. How can we be so sure? Because we've worked with industry leaders - the very people who will want to employ you - to create them.

## It's the perfect place to study. We have:

- Drop in learning decks that have all the latest technology
- Free wi-fi
- Free job search services
- Onsite award winning Littleton Restaurant
- Onsite nursery
- Music campus with recording studio and equipment
- Cisco Networking Academy/ Oracle Academy
- Bell Painting and Decorating Academy
- Theatre and dance space
- Hairdressing Salon and Barber Shop
- Digital Innovation Hub
- Beauty Therapy Spa including sauna, jacuzzi and steam room
- Workshops in: Brickwork, Engineering, Gas, Plumbing, Electrical, Plastering, Motor Vehicle, Carpentry, and more
- Onsite gym
- Sports hall with badminton courts
- Sports training and injury clinic
- Conference/meeting rooms
- Dedicated Engineering Campus that includes: Solid Works and Autodesk suite, 3D printing technologies, CNC machines, pneumatic training rigs and more!



**NEW!**

Our three-floor extension of our Green Lane Campus includes additional space in the gas and plumbing, carpentry and electrical workshops and classrooms. Plus more social space for students and new canteen facilities.

**Green Lane**



# How to get here

Most of Walsall College's campuses are just a short walk from Walsall's main bus and train station which welcomes routes from all over the West Midlands and Staffordshire area. Choose to join us and you may even be eligible for a FREE Bus Pass\*.

## If you're wondering how to get here

Wisemore Campus is just a few minutes walk from the railway station and central bus stops in Walsall town centre - and within walking distance of our Green Lane Campus, Digital Engineering Skills Centre, Broadway Campus and The Hub.

To reach our Hawbush Campus jump on bus 31 or 32 in Walsall which comes every few minutes and you will be onsite in 16 minutes. Our Inclusive Support Team can advise non-independent travellers and arrange disabled parking spaces.

## Car parking for students

Students may park on the Wisemore Campus car park free of charge after 4.30pm (Monday to Friday). On Saturdays and Sundays, the Wisemore car park becomes a council-run pay and display.

## Bike stands

There are bike stands available at all of our campuses.

## Buses to Walsall

No.	From	To
4	Blackheath via West Bromwich	36 Walsall to Alumwell to circular
4H	Hayley Green via Halesowen, Blackheath   West Bromwich	37 Willenhall via Lodge Farm   Darlaston
4M	Merry Hill Shopping Centre via Blackheath   West Bromwich	39 Stowlawn via Bilston and Darlaston
6	Sutton Coldfield via Mere Green, Little Aston   Aldridge	41 Willenhall via New Invention   Bentley
7	Castlefort via Aldridge	51 Birmingham - Walsall via Great Barr
8	Lichfield via Rushall   Pelsall, Clayhanger   Brownhills   Burntwood	69 Wolverhampton via New Cross Hospital   Wood End   New Invention   Beechdale
9	Wolverhampton via Rushall   Pelsall, Bloxwich   New Invention   Bentley Bridge	70 Bloxwich to Walsall Bus Station via Dudley Fields   Beechdale
10	Brownhills via Shelfield	70A Walsall to Beechdale to Circular via Green Lane   Sainsburys
11	Merry Hill to Dudley to Walsall via Powis Avenue   Wood Green Road	77 Erdington via Streetly   New Oscott, Sutton Coldfield
11A	Merry Hill to Dudley to Walsall via Gospel Oak   Myvod	77A Erdington via Streetly   New Oscott   Sutton Coldfield
19	Bloxwich via Blakenall   Goscote	529 Wolverhampton via Willenhall
29	Bloxwich via Blakenall	X529 Wolverhampton
31	Mossley via Bloxwich	934 Birmingham via Kingstanding   Pheasey
32	Lower Farm via Bloxwich	935 Birmingham via Kingstanding   Streetly
34	Bilston via Darlaston	997 Birmingham via Perry Barr   Old Oscott   Pheasey   Aldridge
35	Aldridge (via Rushall)	X51 Cannock to Birmingham via Walsall   Great Barr

\*subject to eligibility

## Trains to Walsall

Direct trains are available from the following stations: Birmingham New Street, Tame Bridge Parkway, Bloxwich, Bloxwich North, Landywood, Cannock, Hednesford, Rugeley Town, Rugeley Trent Valley, Wolverhampton, Coseley, Tipton, Dudley Port, Sandwell & Dudley, Smethwick Galton Bridge, Smethwick Rolfe Street, Duddeston, Aston, Witton, Perry Barr, Hamstead.

## Key

- Pedestrian area
- Max stay 4 hours parking
- Max stay all day parking
- St. Paul's Bus Station



**1** **Wisemore Campus**  
*Littleton St West, WS2 8ES*  
 This campus includes fully-fitted areas for the study of business, creative arts, health, protective services and computing. There is also a performance area, a hair and beauty training salon and a nursery.

**2** **Broadway Campus**  
*Littleton St West, WS2 8ES*  
 An exclusive space just for music students and set in a listed building with its own grounds, students have access to state of the art instruments to enable them to perfect their musical talents.

**3** **The Hub**  
*Littleton St West, WS2 8ES*  
 Whether you need a great restaurant to meet up with friends, a gym and fitness classes, a meeting space, business start-up advice or business training, The Hub is open to students and the general public.

**4** **Green Lane Campus**  
*Long Acre St, WS2 8HX*  
 This campus is the centre for construction trades/ services. Modelled on industry standards, the centre has simulated workshop areas for trades, including painting and decorating, brickwork and carpentry.

**5** **Digital Engineering Skills Centre**  
*Portland St, WS2 8AB*  
 Our Digital Engineering Skills Centre (DESC) includes a range of revolutionary equipment for the engineering and advanced construction industries, including our Light Electric and Alternative Fuel (LEAF) Vehicle Training Centre.

**6** **Hawbush Campus**  
*Beeches Road, WS3 1AG*  
 Based in Leamore, this campus offers a variety of courses for 19+ adults and supported learners including Maths, English, ICT, horticulture & gardening, health & social care, childcare and many more.

**7** **Whitehall Campus**  
*Weston St, WS1 4EQ*  
 Based in the heart of the community, this campus offers community Interpretation, ESOL reading, speaking, listening and writing classes as well as Functional Maths and ICT skills.

# Join the Students' Union



Our Students' Union offers many ways to enjoy yourself, enrich your CV and improve your chances of landing that dream job.

### Make friends

The induction and Freshers Fair both take place in September and are a great chance to make friends and find out what we've got to offer. The Student Lounge offers games consoles, pool tables, table tennis, and PCs - it's your place to relax and enjoy your free time.

## TOTUM CARD

Make the most of discounts from the following brands, plus many more!



College gym



Freshers Fair

### Volunteer and impress employers

Get some great work experience when you volunteer and really stand out from the crowd. It's a brilliant way to boost your skills and show employers how enterprising you are. To find out about volunteering opportunities email:

**volunteer@walsallcollege.ac.uk**

### Speak Up

Only you can know what it's like to be a student and if you want to get more involved in the student experience then becoming a Student Rep, Student Union Officer or Student Governor could be the role for you. You will receive training, support and will help other students get their voice heard. To find out about these roles email: **studentsunion@walsallcollege.ac.uk**

### Make great savings

Walsall College Students' Union is affiliated to the National Union of Students who promote and represent students' rights & issues. Being part of the NUS enables students to engage with a range of national campaigns **www.nus.org.uk**

Students can also save money with the TOTUM card which offers over 200 discounts online and in store. Find out more at, **www.totum.com**

### Have fun

We want you to enjoy your time at college and we have lots of events and activities throughout the year. We always want to hear if you have any ideas or suggestions so please feel free to drop in and see us when you start college or find us at:

**Facebook: WalsallSU**

**Email: studentsunion@walsallcollege.ac.uk**



We are part of the AoC Sports League scheme with teams in basketball and football.

# Healthy Body, Positive Future

Alongside your study programmes, our state-of-the-art sports hall offers you the chance to come and have a go at football, cricket, volleyball, basketball, table tennis, tennis, badminton and dodgeball, as well as a range of dance and relaxation classes including yoga and pilates.

It's a great way to have fun, socialise and make new friends. There's also opportunities to get involved in volunteering and offsite activities and try something really exciting.

This year has seen college students involved in many activities including tennis and golf.

The best part is that it's all **FREE!** We have academies in basketball and football, they offer talented students an opportunity to work towards sporting success. For more information email [sportsdevelopment@walsallcollege.ac.uk](mailto:sportsdevelopment@walsallcollege.ac.uk)



## Enrichment

Taking part in enrichment and extracurricular activities is a crucial part of student life. They are a brilliant way to meet different people, try new things, get active and of course, have fun while learning important life skills.

Many of our enrichment activities are linked to the courses we offer. On one day you could be flying a drone and on another day, learning how to patch plaster a wall. There's even pinhole photography, building your own digital device or games art visualisation to try out.

What's more, activities can be provided to reflect students' interests, so if there is ever anything you would like us to offer such as a jewellery-making class, then we'd be happy to set something up.

We also invite you to hear from guest speakers, raise money for charity and enjoy marking national events such as Remembrance Day and other key awareness, cultural and religious festival dates from Black History Month to Chinese New Year to Diwali.

**We look forward to getting you involved.**

# How to Apply

Don't forget to apply early to get on to the course you want!

<p><b>+ Apply</b></p>	<p><b>Interview</b></p>
<p><b>Fill in your application form</b> Complete the online form, or call us for a paper copy if that's easier.</p>	<p><b>Come and meet us</b> We'll invite you in for an interview with the subject tutor - it's a great chance to talk about the course, and discuss how it can help you achieve the career you want. It might also include an assessment - perhaps a portfolio review or an audition. We'll also invite you and your parent/s or guardian to an admissions evening to really get a feel for the College.</p>

## HAVE ANY QUESTIONS? GET IN TOUCH:

 **01922 657000**  
 **walsallcollege.ac.uk**

<p><b>✓ You're In</b></p>	<p><b>Start Course</b></p>
<p><b>Congratulations - you've been offered a place!</b> This will be a conditional offer based on your predicted results and any other conditions for your course. If you don't get the results you need, please don't panic. We're right here to help you look at different options.</p>	<p><b>Start your course!</b> Welcome to Walsall College. Courses kick off in September with induction activities and a Freshers Fair.</p>

**Visit us** Come along to an Open Day and discover for yourself why Walsall College is a brilliant place to start your journey for your ambitions! For fast track entrance to our Open Days, register your details on our website [www.walsallcollege.ac.uk/planmyvisit](http://www.walsallcollege.ac.uk/planmyvisit)

**Don't Forget!** If you are successful, make sure to check your emails and accept your offer. We will also be in touch to invite you into the College to meet your tutors prior to starting your course.

<p><b>Open Day</b> 11th Oct (4pm - 8pm)</p>	<p><b>Open Day</b> 16th Nov (4pm - 8pm)</p>		<p><b>Open Day</b> 13th Jan (10am - 2pm)</p>		<p><b>Open Day</b> 20th Mar (4pm - 7pm)</p>				<p><b>Open Day</b> 20th Jun (4pm - 7pm)</p>		<p><b>Results Day</b> Collect your VTQ/ T Level/ A Level/ GCSE Results</p>	<p><b>Start of Term</b></p>
<p>October 2023</p> <p>1 2</p>	<p>November 2023</p> <p>1 2</p>	<p>December 2023</p> <p>1 2</p>	<p>January 2024</p> <p>1 2 3</p>	<p>February 2024</p> <p>1 2 3</p>	<p>March 2024</p> <p>1 2 3</p>		<p>April 2024</p> <p>1 2 3</p>	<p>May 2024</p> <p>1 2 3</p>	<p>June 2024</p> <p>1 2 3</p>	<p>July 2024</p> <p>1 2 3</p>	<p>August 2024</p> <p>1 2 4</p>	<p>September 2024</p> <p>2 4</p>
<p><b>1 Apply to Walsall College</b> Applications are open from the October Open Day. Most students apply early as places fill up fast!</p>			<p><b>2 Course/Apprenticeship Interviews</b> Attend your interview - this may be during school hours or scheduled on a weekday evening (some interviews may be conducted virtually).</p>			<p><b>3 Visit us</b> Once you have applied, you will be invited into college to get a taste of what life will be like on your new course. You will get chance to meet your tutors, peers and get all the information you need about your course.</p>			<p><b>4 Enrolment</b> Come and enrol on your course!</p>			

# Stay Local, Go Further with our HE courses

With smaller classroom sizes, face to face learning and lower fees than most universities. Your Walsall College education doesn't need to stop when you reach 18, or when you get a job. We offer a range of higher education courses including degrees right here.



With our HI:ED university level courses, we can help you on the way to your dream job without going any further afield. And if university is your goal, you'll find it's a fantastic, cost-effective step on the way.

### Access Courses (pre Higher Education)

Get the skills you need for HE - they're a great foundation to build on.

### Foundation Degrees

Get the know-how and up-to-date specialist industry skills that employers need - then top-up to full degree level at the College or university if you like.

### Higher National Certificate/ Diplomas (HNCs/HNDs)

These offer a mix of the academic, practical and vocational, including our new HTQ accredited qualifications. Enjoy your improved career prospects straightaway or top up to degree level.

### Level 6 Top-Up Degrees

We're delighted to offer our one-year top-up designed to convert an existing qualification at Level 5 into a full BA or BSc Honours qualification at Level 6. It's aimed at successful HND/FdA (or equivalent) graduates who want to gain an affordable, accessible university level qualification. Visit our website to see what's on offer.

### Higher Apprenticeships

Get the higher level skills employers want - with the opportunity to enrol on higher level courses (may need additional qualifications for some higher level courses).

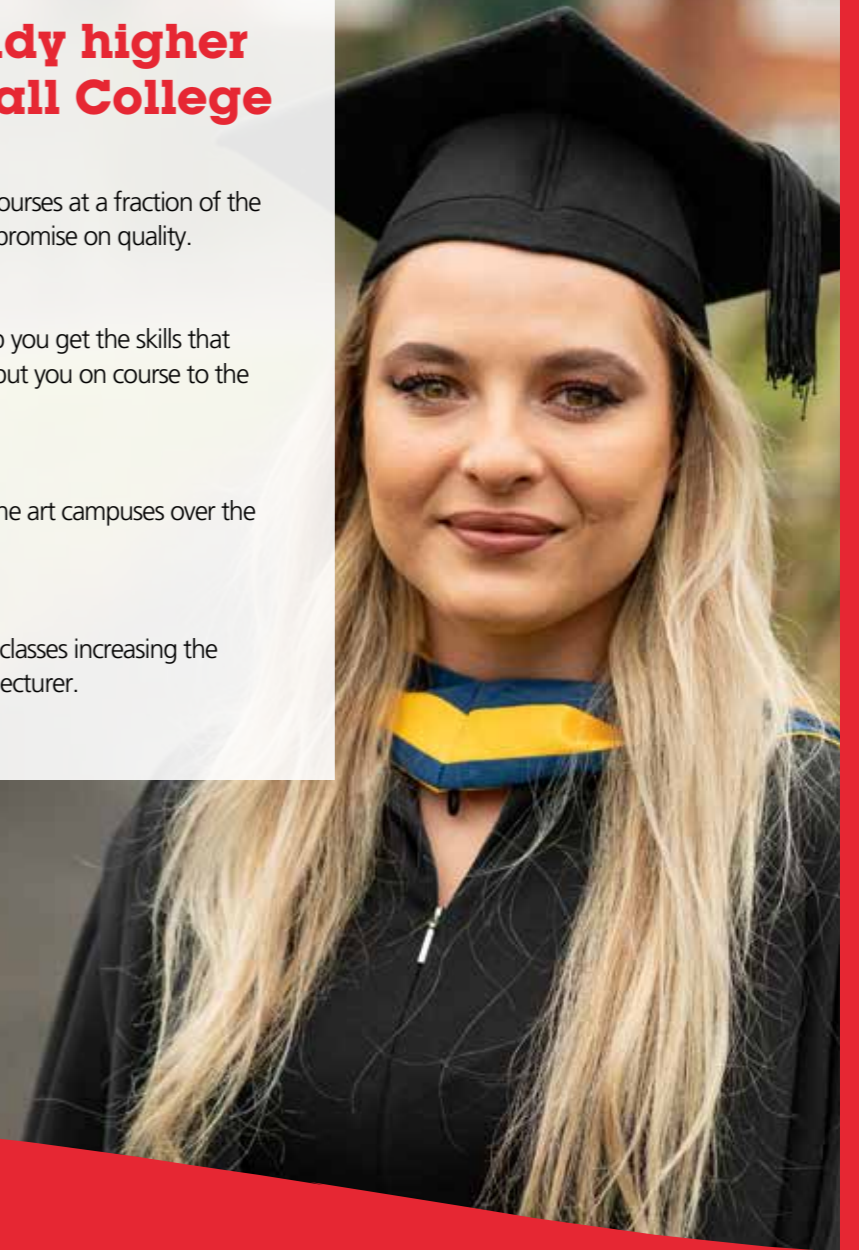
### Professional Qualifications

Enhance your skills and career prospects with these higher level courses.



## Four reasons to study higher education at Walsall College

- Spend less** Study our HNC/D and top-up courses at a fraction of the price of university with no compromise on quality.
- Achieve More** Our close industry links will help you get the skills that employers are looking for and put you on course to the career you want.
- Fantastic Facilities** £76m invested in five state of the art campuses over the last seven years.
- Small Class Sizes** Our lessons are taught in small classes increasing the one-to-one support from your lecturer.



# Where are they now?

Your future starts with Walsall...but the world awaits. Our graduates go on to universities around the globe. Where will your course take you?



*"My course was full of practical activities that put all my learning into perspective. And you get clear career insights that help you progress."*

**Shardae Watson**  
**Studied:** Level 3 Protective Services  
**Progression:** BSc Hons Paramedic Science at Birmingham City University



*"My distinction grade was down to my wonderful lecturers. They've so much knowledge you can draw on and which inspires and motivates you further along your career path."*

**Bethan Austin**  
**Studied:** T Level in Education and Childcare  
**Progression:** BA Hons Primary Education at University of Wolverhampton



*"After studying a T Level and completing an industry placement, I now understand how other construction professions can impact on my future career as an architect."*

**Amandeep Sond**  
**Studied:** T Level in Construction: Design, Surveying and Planning  
**Progression:** BSc Hons Architecture at University of Wolverhampton



*"Studying a BTEC and an A Level meant my workload was spread over two years. Lecturers are thorough and there are lots of resources available to prepare you for every science-related university pathway."*

**Rex Jeffries**  
**Studied:** Level 3 Applied Science with A Level Biology  
**Progression:** BSc Diagnostic Radiology at University of Derby



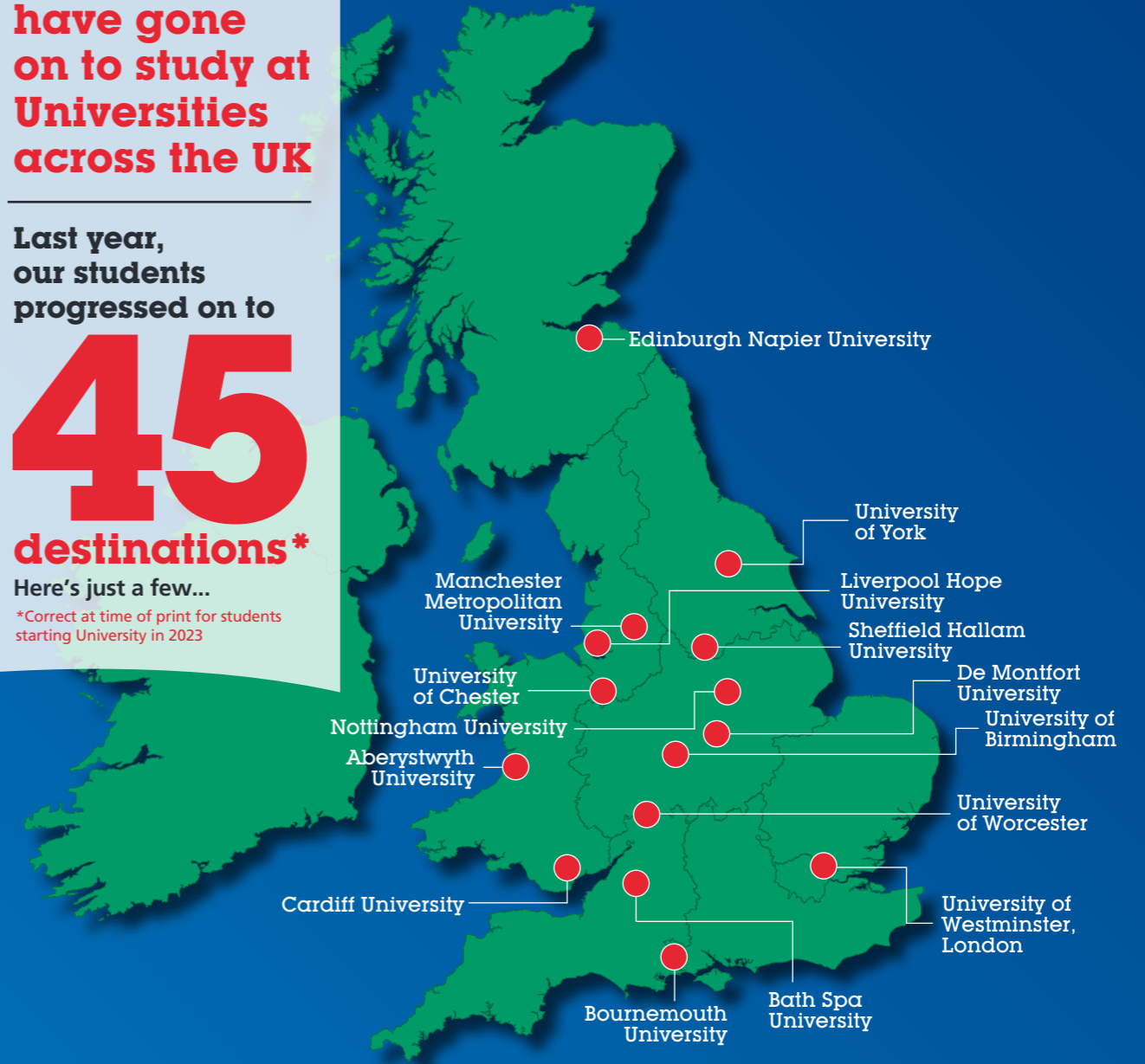
## Our students have gone on to study at Universities across the UK

Last year, our students progressed on to

# 45 destinations\*

Here's just a few...

\*Correct at time of print for students starting University in 2023



# Apprenticeships



See our  
latest  
vacancies

Scan the QR code

## How does an Apprenticeship work?

### Initial Assessment

Before you begin your apprenticeship, we will conduct an initial assessment with you. This will assess your English and Maths skills.

### Developing Knowledge, Skills and Behaviours

Your apprenticeship will develop the knowledge, skills and behaviours you need to be able to work competently in the particular occupation you have chosen:

**Knowledge** - the information, technical detail, and 'know-how' that you develop and understand to successfully carry out your duties. Knowledge will be occupation-specific and generic.

**Skills** - the practical application of knowledge needed to successfully undertake your duties. These are learnt through on and/or off-the-job training or experience.

**Behaviours** - mindsets, attitudes or approaches needed for competence. These may be similar across other apprenticeships, for example, being adaptable and professional.

### Off-the-Job Training

Off-the-job training is learning completed outside of your day-to-day work duties. This could be your time studying at college. This training is part of your normal (contracted) working hours.

### English and Maths

Applicants who do not have grades 4 in GCSE Maths and English or equivalent, will be required to study these to improve their grades. This will be a mandatory element of the programme.

### Gateway

The 'Gateway' is a set of requirements that need to be met so your employer is able to put you forward for an 'End Point Assessment'. This includes completion of the mandatory aspects of the apprenticeship and any work that supports specified assessment methods.

### End Point Assessment

End point assessment (EPA) is an assessment of the knowledge, skills and behaviours that you have learned throughout your Apprenticeship and which confirms that you are occupationally competent.

## Apprenticeships

An apprenticeship is a brilliant first step on the career path in many businesses. They're an excellent way of gaining nationally recognised qualifications whilst earning a wage, and combine practical 'hands on' work experience with academic knowledge.

Put the skills you learn into practice on the job, in the workplace, in real life situations - what could prepare you better?

Apprenticeships are available from Level 2 to Level 7 in a wide range of subjects.

### How do you become an apprentice?

You might already be employed but if not, to find job vacancies go to:

- [www.apprenticeships.gov.uk](http://www.apprenticeships.gov.uk)
- [www.walsallcollege.ac.uk/apprenticeships](http://www.walsallcollege.ac.uk/apprenticeships)

### If you are already employed...

If you want to further your qualifications in the job you are currently in, you could ask your employer if this is possible. Apprenticeship training won't cost your employer anything\* if you are between the ages of 16-18. \*Subject to eligibility.

### How much can you earn?

The National Minimum Wage for apprentices is £5.28\*\* per hour (as of Apr 2023), but many employers pay more - the average salary is approximately £211 per week, but some employers could pay more.

### What are the entry requirements?

Ideally you will possess grade 4 or above in English and Maths; we can offer support if required. Each employer and Standard will have different entry criteria. Check with our Apprenticeships Team for further information.

### What if you don't meet the entry criteria?

Don't worry, there are a number of routes you can follow to help you get the required skills to do an Apprenticeship. Please come in to the college to the Job Shop or call **01922 651129** and we can discuss your options.

\*\*subject to change (correct at time of print)

### We offer Apprenticeships in:

- Accounting, Finance and Management
- Administration and Customer Service
- Automotive
- Business Accounting and Enterprise
- Construction and Property Maintenance
- Dental
- Education and Teacher Training
- Electrical Installation
- Engineering
- Health & Social Care
- Pharmacy
- Signmaking
- Scaffolding, Roofing & Groundwork



You're paid to learn and receive excellent training. I love being in control of my schedule. My work life is more flexible and I've benefited more financially.

# Achieving Together



## The Achieving Together programme is designed for young people aged 14-17 looking for a mainstream education experience that is an alternative to school or home study.

The programme focuses on improving your academic qualifications in English, Maths and ICT, whilst delivering a package of employability qualifications to develop skills and qualities related to communication, team work, confidence and problem solving. You'll get English, Maths, ICT and a package of employability and social skills you need for life and work. You'll also work on building up your confidence, enhance your problem solving skills and build on your communication by working in teams. Smaller class sizes - and dedicated attention from our encouraging tutors - help you achieve your potential in a supportive environment.



## How to join:

This programme is available in the following ways:

**School Links:** A referral from your school

**Elected Home Educated (EHE):** Students who are currently registered as Elected Home Educated with the Local Authority (LA)

**Post 16:** Students who are over 16 years of age but do not have the academic qualifications to enrol onto a mainstream vocational course, or who need additional social or emotional support to succeed.

The Achieving Together team will work with students to improve their knowledge in a variety of subjects, with the aim of achieving Entry 3, Level 1 and Level 2/GCSE qualifications.

## Entry Requirements

There is no formal entry criteria. There will be an Interview, Initial Assessment and discussion on past achievements (non-educational).

## Subjects covered:

- Functional Skills English (Entry Level 1 – Level 1)
- Functional Skills Maths (Entry Level 1 – Level 1)
- Functional Skills ICT (Entry Level 2 – Level 2)
- GCSE English & Maths
- The Prince's Trust
- Personal Social Development and Employability
- Group Tutorial



Achieving Together

## Pastoral Support

As an Achieving Together student you'll have a dedicated Pastoral Officer who is assigned to you and will be committed to every aspect of your well-being. The Pastoral Officer will provide support to students facing barriers preventing you from maximising your academic potential. Support can be focused on mental health, social and emotional well-being, lack of confidence, low self-esteem or simply a listening ear.

## Thinking about next steps?

You can move on to a cross-college course, training programme or employment.



*"Achieving Together is about being confident, making new friends and improving your English and Maths. Best of all, it's so much fun through the activities you do and trips you go on It helps build your future."*

**Harshdeep Kaur**  
Progression: Level 1 Hair & Beauty

**FIND OUT MORE**





# Aviation Operations, Travel & Tourism



## Are you passionate about travelling and would like to experience new adventures, cultures and a world of employment opportunities?

The tourism industry is growing fast and there are lots of opportunities at home and abroad. Develop a career in this diverse industry, become a travel agent, aircraft dispatcher, cabin crew, passenger service agent...the world is your oyster.

### Employer links include:

- Access Bookings
- Birmingham Airport
- Click Travel
- Cooperative Travel
- TUI
- Virgin Holidays

## Aspire to be...

There are so many careers in Travel and Tourism including:

- Aircraft Dispatcher
- Resort/Holiday Rep
- Departure / Arrival Agent
- Cabin Crew
- Travel Consultant
- Baggage Advisor
- Customer Service Agent
- and more!

## Did you know...

By 2025, the tourism industry UK is set to be worth over **£257 billion.**

## You could earn...

Travel Agency Manager  
**£20,000 - £40,000**

## Choose your pathway

Study Aviation, Operations or Travel and Tourism **your** way with one of the following pathways:

### VTQ Pathway

- Level 2 Diploma in Air Cabin Crew
- Level 2 Certificate in Aviation Ground Operations

### Travel and Tourism VTQ Pathway

- Level 2 Diploma in Travel & Tourism
- Level 3 Extended Diploma in Travel & Tourism

## Develop career-ready skills and knowledge

- Holiday promotion, sales and customer service
- Understanding tourism in the UK and the world
- Knowledge of overseas resort operations
- Interpersonal and communication skills
- Understanding of airline and aviation operations
- Knowledge of health, safety, security and emergency procedures
- Crew room duties and the role of cabin crew
- Security and Communications required to work in an Aviation environment

## Thinking about next steps?

You can move on to a higher level apprenticeship, university or employment.



*"Working for Jet2 as an airport dispatcher at Birmingham Airport is everything I wanted it to be. At my job interview, I proved I was a team player, conscientious and a good communicator and decision-maker"*

**Connor Boden**  
Level 3 Diploma in Aviation Operations

**FIND OUT MORE**



## Entry Requirements

### Aviation and Cabin Crew Pathway

**Level 2:** 4 GCSEs at grades 3 or above including English Language and/or Maths.

### Travel and Tourism Pathway

**Level 2:** 3 GCSEs at grades 3-2, to include English or a Level 1 related qualification.

**Level 3:** 4 GCSEs at grades 4 or above including English Language and/or Maths or a Level 2-related qualification.

## How to apply

Pick the qualification pathway you would like to study, for your chosen subject on our website. During your interview you will be assigned a level dependent on your predicted grades.



# Automotive

**Do you have a driving ambition to work with vehicles? If you love fixing cars, trucks and motorbikes, our courses can lead to a rewarding career in the retail motor industry.**

In our industry-standard training workshop, you'll learn how to service vehicles, and diagnose and fix mechanical and electric issues. You'll also experience hybrid and electrical technology, preparing you for the future of the automotive sector.

### Employer links include:

- Halfords
- West Midlands Ambulance Services
- West Midlands Fire Service
- Electude UK
- Trade Centre UK
- Autotech Academy

### Aspire to be...

There are so many careers in the automotive sector including:

- Auto Technician
- Automotive Engineer
- Dealership Manager
- MOT Inspector
- Car Manufacturing Technician
- Vehicle Service Technician
- and more!

### Did you know...

**More than 1.5 million** engines were built in the UK in 2022

### You could earn...

- Motor Mechanic: £18,000 - £35,000
- Automotive Engineer: £20,000 - £45,000

## Choose your pathway

Study Automotive **your** way with one of the following pathways:

VTQ Pathway	T Level	Apprenticeships
Level 1 Motor Vehicle Maintenance Level 2 Motor Vehicle Maintenance Level 3 Diploma in Light Vehicle Maintenance and Repair Principles	T Level in Engineering Maintenance, Installation and Repair (Light and Electric Vehicles)	Autocare Technician Apprenticeship Standard Heavy Vehicle Service and Maintenance Technician Apprenticeship Standard Motor Vehicle Service and Maintenance Technician (Light Vehicle) Apprenticeship Standard

## Develop career-ready skills

- Vehicle systems - suspension, steering, braking, engine, electronic
- Electric / Hybrid vehicle technologies and systems
- Tyre legislation and technical information
- Diagnostic procedures
- Customer care and satisfaction
- Carrying out vehicle safety inspections and routine maintenance
- Automotive Fast-Fit systems
- Digital skills including use of autodata software and diagnostic equipment

## How to Apply

Pick the qualification pathway you would like to study, for your chosen subject on our website. During your interview you will be assigned a level dependent on your predicted grades.

## Entry Requirements

### VTQ Pathway

**Level 1:** No formal qualifications are required. Interview, dexterity test and an initial assessment will be required.

**Level 2:** A Level 1 qualification in a related subject, interview, initial assessment and a dexterity test.

**Level 3:** A Level 2 qualification in a related subject, interview, initial assessment and a dexterity test.

### T Level Pathway

- Grade 5 in Maths, English and Science.
- Interview with a tutor and initial assessment
- A commitment to undertaking a 45-day industry placement following a successful interview with an employer.

### Apprenticeships

Ideally you will possess grade 4 or above in English and Maths; we can offer support if required. Each employer and Standard will have different entry criteria. Check with our Apprenticeships Team for further information.

**Thinking about next steps?**

You can move on to a higher level apprenticeship, university or employment.



**FIND OUT MORE**



# Business, Management and Marketing

**Business is booming and you can be part of it. You'll discover how organisations work and what different departments do to make them a success.**

Learning from industry experts, you'll gain essential skills in communication, professionalism, leadership, decision-making, administration, marketing and more. So whatever your career ambitions - whether you want to work in a business or start your own - you're set up for success.

## Employer links include:

- Dudley Council
- whg
- The Entertainer
- Dudley Group NHS Foundation Trust
- Aston University

## Aspire to be...

Business and management skills open the door to careers like:

- Administrator
- Marketing Officer
- Human Resources Officer
- Business Development Officer
- Business Founder/Owner
- General Manager
- and more!

## You could earn...

Marketing Executive	£28,000 - £75,000	Business Project Manager	£28,000 - £75,000
---------------------	-------------------	--------------------------	-------------------

## Choose your pathway

Study Business and Management **your** way with one of the following pathways:

### VTQ Pathway

- BTEC Level 2 Certificate in Marketing
- BTEC Level 2 Marketing - Games Event Planning
- BTEC Level 3 Extended Diploma in Business and Management
- BTEC Level 3 Extended Diploma in Business and Marketing

### Apprenticeships

- Team Leader/Supervisor Apprenticeship Standard
- Operations or Departmental Manager Apprenticeship Standard

## Develop professional skills

- Professional workplace communication
- Business administration and report writing
- Marketing, events and promotion
- Business decision-making and leadership styles
- Digital skills inc software systems, email and social media tools
- Understanding Equality, Diversity and Inclusion
- Understanding HR systems and legal requirements
- Look at business improvement techniques
- Devising digital marketing campaigns
- Branding a business
- International business
- Recruitment and selection

## Entry Requirements

### VTQ Pathway

**Level 1:** 2 GCSEs at grade 4 and above, and 3 GCSEs at grade 3 including Maths and English or related qualifications at Level 1. You will also be asked to complete a short written assessment.

**Level 2:** 5 GCSEs grade 3/4 including GCSE Maths and English grade 3 or above.

**Level 3:** 5 GCSEs at grade 4 or above including Maths and English. You will also be asked to sit a short written assessment.

### Apprenticeships

Ideally you will possess grade 4 or above in English and Maths; we can offer support if required. Each employer and Standard will have different entry criteria. Check with our Apprenticeships Team for further information.

## How to Apply

Pick the qualification pathway you would like to study, for your chosen subject on our website. During your interview you will be assigned a level dependent on your predicted grades.

**Thinking about next steps?**

You can move on to a higher level apprenticeship, university or employment.



**FIND OUT MORE**



# Accounting and Finance



## If you're good with numbers and want a career in business, accounting and finance could be for you.

Finance skills are in demand - every business needs to balance the books, submit their taxes, and pay staff and suppliers.

Whether you go straight into employment - for example, as a finance officer or accounts clerk - or want to develop skills and confidence to begin further training, a rewarding career starts here.

### Employer links include:

- Wolverhampton Council
- Walsall Council
- HSBC
- Natwest

## Industry Spotlight

There are so many careers in accounting and finance including:

- Accounts Payable Clerk
- Bookkeeper
- Credit Controller
- Budget Analyst
- Finance Officer
- Financial Advisor
- Accountant
- and more!

## You could earn...

Advertising Account Executive	Private Practice Accountant	Graduate Accountants
<b>£19,000 - £36,000</b>	<b>£22,000 - £65,000</b>	<b>£30,000 - £84,000</b>

## Choose your pathway

Study Accounting and Finance **your** way with one of the following pathways:

VTQ Pathway	T Level	Apprenticeships
Level 3 Business and Management Accounting	T Level in Legal, Finance and Accounting	Accounts or Finance Assistant Apprenticeship Standard Assistant Accountant Apprenticeship Standard Payroll Administrator Apprenticeship Standard Professional Accounting or Taxation Technician Apprenticeship Standard
A Level Pathway		
A Level Accounting, A Level Economics and A Level Business		

## Develop in-demand financial skills

- Calculating VAT and submitting a VAT return
- Learning about different types of pay and pensions
- Using payroll software to pay wages
- Working with sales and purchase ledgers
- Understanding accounting transactions
- Running calculations and ensuring payments are correct
- Complying with relevant legal requirements
- Producing reports using accounting software
- Look at security and risk
- Fundamentals of law
- Data driven analytics and innovation

## How to Apply

Pick the qualification pathway you would like to study, for your chosen subject on our website. During your interview you will be assigned a level dependent on your predicted grades.

## Entry Requirements

### VTQ Pathway

**Level 3:** 5 GCSEs at grade 4 or above including Maths and English. You will also be asked to sit a short written assessment.

### T Level Pathway

Grade 5 GCSE in Maths and English Language and at least 4 other GCSEs at grade 4 and above in relevant subjects.

### A Level Pathway

Minimum grade 5 or above in GCSE English Language and Maths along with other grade 5 or above GCSE achievements.

### Apprenticeships

Ideally you will possess grade 4 or above in English and Maths; we can offer support if required. Each employer and Standard will have different entry criteria. Check with our Apprenticeships Team for further information.

**Thinking about next steps?**

You can move on to a higher level apprenticeship, university or employment.



**FIND OUT MORE**



# Business Administration and Customer Service



## If you want to work in retail or hospitality - or excel in a call centre environment - customer service skills are essential.

And with our customer service apprenticeships, you can earn while you learn them. You'll split your time between studying and working in a customer service role, putting your new skills into practice. Learn how to build rapport, give great service, make sales, resolve complaints, and keep customers happy.

### Employer links include:

The Dudley NHS Group Foundation Trust

University Hospitals Birmingham NHS

EDS Worldwide

## Aspire to be...

Customer service skills can lead to jobs like:

Call Centre Agent Retail Manager

Patient Care Coordinator Bank Clerk

Technical Support Representative

Help Desk / Receptionist Help Desk Support

Retail Manager and more!

## Did you know...

109,000 people in the UK work in customer service.

## You could earn...

Business Advisor

£25,000 -  
£54,000

Business Analyst

£25,000 -  
£54,000

Study Business Administration **your** way with one of the following pathways:

### T Level

T Level in Management and Administration

### Apprenticeships

Business Administrator Apprenticeship Standard  
Customer Service Practitioner Apprenticeship Standard  
Customer Service Specialist Apprenticeship Standard

## Develop career-ready skills

- Understanding customers and building rapport
- Creating a customer focused experience
- Achieving sales through effective selling skills
- Managing customer expectations
- Knowing how to adapt your service style
- Dealing with customer conflict and challenge
- Understanding industry best practice
- Digital customer service skills
- Look at business improvement techniques
- Writing reports



## Entry Requirements

### T Level Pathway

**Level 3:** Grade 5 GCSE Maths and English Language and at least 4 other GCSEs at grade 4 and above in relevant subjects.

A successful interview with a tutor. A commitment to undertaking a 45 day industry placement following a successful interview with an employer.

### Apprenticeships

Ideally you will possess grade 4 or above in English and Maths; we can offer support if required. Each employer and Standard will have different entry criteria. Check with our Apprenticeships Team for further information.

## How to apply

Pick the qualification pathway you would like to study, for your chosen subject on our website. During your interview you will be assigned a level dependent on your predicted grades.

Thinking about next steps?

You can move on to a higher level apprenticeship, university or employment.



FIND OUT MORE



# Law, Criminology and Psychology



## From crime and courtroom drama, to consumer and human rights, law touches every part of our lives.

It's a fascinating topic and not just for aspiring barristers and solicitors. Studying law can lead to work in a legal firm or business, victim support, law enforcement, or rehabilitation of offenders, and more. If you can't get enough of true crime podcasts, combine law with criminology and psychology for an insight into the criminal mind.

### Employer links include:

Bila Legal Services | HCB solicitors

## Aspire to be...

There are so many careers in law including:

- Legal Secretary | Barrister
- Paralegal | Solicitor | Court Usher/Officer
- Victim Care Officer | Probation Officer
- Company Secretary | **and much more!**

## Did you know...

There are over 219 thousand solicitors in the UK.

## You could earn...

Company Secretary	Barrister	Crown Prosecutor
£30,000 - £78,000	£20,000 - £78,000	£38,000 - £42,630

## Choose your pathway

Study Law, Criminology and Psychology **your** way with one of the following pathways:

### VTQ Pathway

Level 3 Applied Law, Criminology & Psychology

### A Level Pathway

A Level in Law, A Level Psychology and Criminology VTQ

## Develop sought-after skills and knowledge

- Understand the British legal system
- Learn about criminal liability, consumer rights and more
- Discover the history of law, criminal law and family law
- Explore criminology, crime and punishment
- Understand the human mind
- Develop business and marketing skills
- Conduct digital research and develop IT skills
- Crime scene to court room
- Criminological theories
- Psychological approaches and applications
- Conducting psychological research



## Entry Requirements

### VTQ Pathway

**Level 3:** 4 GCSEs at grade 4 including Maths plus a grade 5 in English Language.

You also will be asked to sit a short written assessment.

### A Level Pathway

4 GCSEs at grade 4 including English at Grade 6 and Maths at Grade 4.

You will also be asked to sit a short written assessment.

## How to apply

Pick the qualification pathway you would like to study, for your chosen subject on our website. During your interview you will be assigned a level dependent on your predicted grades.

## Thinking about next steps?

You can move on to a higher level apprenticeship, university or employment.



# Childcare & Early Years



## Dream of working in a school or nursery? Develop your abilities to care for, teach and support children with one of our rewarding childcare courses.

You'll learn about child development and communication, planning and managing educational activities, how to keep children safe and healthy, and lots more. You will also have the opportunity to work with local primary schools where you will host forest school activities. Your course could lead straight to a career with young people or lay the foundations for further study.

### Employer links include:

Nurseries and primary schools across Walsall, West Bromwich, Cannock and Birmingham

## Industry Spotlight

There are so many careers in childcare and education including:

- Primary or Secondary Teacher
- Nursery Worker   Educational Psychologist
- Education Welfare Officer   Youth Worker
- Teaching Assistant   **and much more!**

## Did you know...

**802,000 people** work in childcare in the UK

## You could earn...

Primary Teacher	Youth Worker
<b>£28,000 - £43,000</b>	<b>£18,000 - £33,000</b>

## Choose your pathway

Study Childcare and Early Years **your** way with one of the following pathways:

VTQ Pathway	T Level	Apprenticeship
Level 1 Foundation Diploma in Caring for Children Level 2 Certificate Introducing Caring for Children and Young People Level 2 Diploma for the Early Years Practitioner Level 3 Diploma in Childcare and Education	T Level in Education and Childcare	Teaching Assistant Apprenticeship Standard

## Develop career-ready skills

- Understanding children's growth and development
- Safeguarding, protection and welfare of babies and children
- Supporting children through play, musical and craft activities
- The communication needs of children with learning difficulties
- Paediatric first aid skills
- Healthy eating and nutrition for children and families
- Observation, assessment and planning activities
- Understanding schools, policies and procedures

## How to apply

Pick the qualification pathway you would like to study, for your chosen subject on our website. During your interview you will be assigned a level dependent on your predicted grades.

## Thinking about next steps?

You can move on to a higher level apprenticeship, university or employment.

FIND OUT MORE



## Entry requirements

### VTQ Pathway

**Level 1:** 2 GCSEs GCSE grade 2 in English and Maths. An initial assessment will need to be undertaken and an interview conducted to assess suitability for the programme.

**Level 2:** GCSEs at GCSE grades 3 - 1 (including English and Maths). Or a relevant Level 1 related qualification.

**Level 3:** 5 GCSEs at GCSE grade 4 or above including English Language and/or Maths (some courses may require both, please check your individual course). Or a relevant Level 2 related qualification.

### T Level Pathway

Grade 5 GCSE in Maths and English Language and at least 4 other GCSEs at Grade 4 and above in relevant subjects.

A successful interview with a tutor. A commitment to undertaking a 45-day industry placement following a successful interview with an employer.

### Apprenticeships

Ideally you will possess grade 4 or above in English and Maths; we can offer support if required. Each employer and Standard will have different entry criteria. Check with our Apprenticeships Team for further information.

# Health & Social Care



**There are more than 350 different roles in health and social care - from nursing and midwifery, to social work and speech therapy.**

Our courses are your first step to working in this rewarding sector. You'll develop the professional skills you need to care for people with compassion and dignity through work experience and employer-led masterclasses. You could then go directly into employment - for example, as a care worker - or use your course as a springboard to further specialist study.

### Employer links include:

- NHS Walsall Manor Hospital
- Royal College of Nursing
- The Dudley Group NHS

### Aspire to be...

There are over 350 different careers in health and social care including:

- Adult or Children's Nurse
- Midwife
- Speech Therapist
- Psychologist
- Counsellor
- Social Worker
- Health Visitor
- and much more!

### Did you know...

1.54 million people work in adult social care in the UK.

### You could earn...

Midwife	Nurse
<b>£27,055 -</b>	<b>£27,055 -</b>
<b>£47,672</b>	<b>£40,588</b>

## Choose your pathway

Study Health and Social Care **your** way with one of the following pathways:

VTQ Pathway	T Levels	Apprenticeships
Level 1 Introductory Diploma in Health & Social Care Level 2 Extended Diploma in Health and Social Care Level 3 Extended Diploma in Health & Social Care	T Level in Health (Adult Nursing/Therapy/Midwifery)	Adult Care Worker Apprenticeship Standard Lead Adult Care Worker Apprenticeship Standard Healthcare Support Worker Apprenticeship Standard Senior Healthcare Support Worker Apprenticeship Standard

## Develop professional skills and knowledge

- Understanding human development, anatomy and physiology
- Developing effective communication skills with adults and children
- Supporting people with social activities, eating, mobility and personal care
- Understanding and promoting healthy eating and lifestyles
- Monitoring health and wellbeing
- Ensuring compliance with regulations, policies and procedures

## How to apply

Pick the qualification pathway you would like to study, for your chosen subject on our website. During your interview you will be assigned a level dependent on your predicted grades.

## Thinking about next steps?

You can move on to a higher level apprenticeship, university or employment.

FIND OUT MORE

## Entry requirements

### VTQ Pathway

**Level 1:** 2 GCSEs grades 3 - 1 although students without qualifications may apply.

**Level 2:** 4 GCSEs at grades 3 - 1 (including a curriculum-related subject), or a Level 1 related qualification. Successful completion of a DBS check.

**Level 3:** 5 GCSEs at grade 4 or above including English Language/Literature and/or Maths, or a Level 2 related qualification (minimum Extended Diploma) at overall Merit grade. Successful completion of a DBS check.

### T Level Pathway

5 GCSEs at grade 4 or above, including Maths, English Language and Combined Science. Successful completion of a DBS check. Full medical history & health assessment. Evidence of childhood vaccinations to include MMR, Hepatitis A, Hepatitis B & Tetanus.

A successful interview with a tutor. A commitment to undertaking a 45-day industry placement following a successful interview with an employer.

### Apprenticeships

Ideally you will possess grade 4 or above in English and Maths; we can offer support if required. Each employer and Standard will have different entry criteria. Check with our Apprenticeships Team for further information.



# Pharmacy & Dental



## From dispensing medications to helping dentists treat their patients, there are lots of hands-on healthcare roles in pharmacy and dentistry.

These jobs complement other medical professions, ensuring patients get high-quality care that keeps them healthy. You'll learn clinical skills to support your chosen career path - such as measuring and packaging medicines or how to use common dental equipment - and develop knowledge of the human body.

### Employer links include:

- Oswyn House Dental Practice
- Church Stretton Dental
- Alpha Pharmacy

### Aspire to be...

There are over 350 different careers in pharmacy and dental including:

- Pharmacy Technician
- Dispensing Assistant
- Pharmacy Assessor
- Clinical Technician
- Dental Nurse
- Dental Therapist
- Dental Hygienist
- Orthodontic Dentist

### Did you know...

There are currently **14,465 dental practices** across the UK.

### You could earn...

- |                  |                  |
|------------------|------------------|
| Dentist          | Pharmacist       |
| <b>£34,728 -</b> | <b>£33,706 -</b> |
| <b>£96,154</b>   | <b>£65,262</b>   |



### Apprenticeships

- Dental Nurse Apprenticeship Standard
- Pharmacy Services Apprenticeship Standard
- Pharmacy Technician Apprenticeship Standard

## Develop career-ready skills

### Pharmacy

- Dispensing procedures and practices
- The different types of prescriptions
- Doses and forms of medicines
- Issues that may affect how medicines are taken

### Dental

- Dental anatomy, respiratory and circulatory systems
- Health promotion and disease prevention
- The transmission of infectious diseases and their prevention
- Dental clinical skills

## Entry requirements

Ideally you will possess grade 4 or above in English and Maths; we can offer support if required. Each employer and Standard will have different entry criteria. Check with our Apprenticeships Team for further information.

## How to apply

Pick the qualification pathway you would like to study, for your chosen subject on our website. During your interview you will be assigned a level dependent on your predicted grades.

## Thinking about next steps?

You can move on to a higher level apprenticeship, university or employment.



*"My Apprenticeship is full of interesting, fun and enjoyable moments. I was attracted to the role because of its active, hands-on nature."*

**Faiza Hoque**  
Apprentice Pharmacy Services Assistant at Larvic Pharmacy

## FIND OUT MORE



Pharmacy Courses



Dental Courses



# Computing

## From web design and games development to data analysis and cyber security, computing skills are in high demand.

And - as computers become ever-more important in our lives - the opportunities for computer experts will keep growing. Choose a computing course that matches your experience and aspirations - then get hands-on with the latest technology in our high-spec labs. You'll be supported by industry experts and benefit from our close links with tech brands and local employers.

### Employer links include:

- Covatic
- Methods
- LearnPlay Foundation
- CISCO
- Oracle

## Aspire to be...

There are so many careers in computing including:

- IT Technical Support
- Security Engineer
- Network Technician/Engineer
- Software Developer/Engineer
- Games/Web Developer
- Database Architect
- Software Analyst
- and much more!

## You could earn...

- Solutions Architect
- Software Engineer
- £16,000 - £35,000
- £18,000 - £70,000

## Choose your pathway

Study Computing **your** way with one of the following pathways:

### VTQ Pathway

Level 1 BTEC in Computing  
 Level 2 BTEC in Computing  
 Level 3 BTEC in Computing (Software Development, Cyber Security, Computer Networks)

### T Level

T Level in Computing: Digital Production, Design and Development

### A Level Pathway

A Level Computing , A Level Maths and BTEC Level 3 Extended Certificate in Computing

## Develop cutting-edge career skills

- Understanding software, systems and networks
- Web and games design and programming
- Programming languages and writing code
- Building computer systems
- Application and interface design
- System analysis and design
- Software development
- Cyber security

\* Your exact topics and skills will depend on the course and level you choose.

## How to apply

Pick the qualification pathway you would like to study, for your chosen subject on our website. During your interview you will be assigned a level dependent on your predicted grades.

## Entry Requirements

### VTQ Pathway

- Level 1:** No formal qualifications needed.
- Level 2:** 3 GCSEs at grade 3 or above including English Language and Maths. Relevant Level 1 qualifications will also be considered.
- Level 3:** 5 GCSEs at grade 4 or above including English Language and/or Maths (some courses may require both, please check with course tutor at interview). Level 2 qualifications in relevant subjects will also be considered.

### A Level Pathway

Level 3: English and Maths at grades 6-9 and a Science GCSE at grades 6-9. Additional GCSE results at grades 5-9 will be an advantage.

### T Level Pathway

Grade 5 GCSE in Maths and English Language and at least 4 other GCSEs at Grade 4 and above in relevant subjects.  
 A successful interview with a tutor. A commitment to undertaking a 45-day industry placement following a successful interview with an employer.

## Thinking about next steps?

You can move on to a higher level apprenticeship, university or employment.

FIND OUT MORE



# Bricklaying

**Build a brilliant career with bricklaying. As a bricklayer, you'll be in demand on construction sites, erecting new homes and business premises.**

You can also progress to niche areas like heritage restoration and stonemasonry. Experienced bricklayers can progress to construction site management, self-employment, tutoring and more. You'll study under industry experts to become a competent, confident bricklayer - with the skills to pursue your preferred career path.

### Employer links include:

- Jessup    Keepmoat Homes
- Ibstock Bricks    Taylor Wimpey

### Aspire to be...

Bricklaying skills can lead to lots of careers including:

- Bricklayer    Self-employed tradesperson
- Construction Site Supervisor    Stonemason
- Construction Manager    Heritage Restorer
- and much more!**

### Did you know...

**12,000 construction jobs** have been created in the West Midlands over the last 3 years.

### You could earn...

Bricklayer  
**£17,000 - £40,000**

## Choose your pathway

Study Bricklaying **your** way with one of the following pathways:

VTQ Pathway
Level 1 Bricklaying Level 2 Bricklaying

Apprenticeship
Bricklayer Apprenticeship Standard

## Develop in-demand construction skills

- Constructing block walling, brick walling and cavity walling
- Mixing and preparing construction materials
- How to construct chimneys, fireplaces and decorative features
- How to repair and maintain masonry
- Health, safety and welfare in construction
- Knowledge of construction technology
- Digital skills in communication and information management
- Working safely and professionally

## Entry Requirements

### VTQ Pathway

- Level 1:** No formal qualifications needed.
- Level 2:** A Level 1 Bricklaying qualification and an appropriate level of English and Maths.

### Apprenticeship

Ideally you will possess grade 4 or above in English and Maths; we can offer support if required. Each employer and Standard will have different entry criteria. Check with our Apprenticeships Team for further information.

## How to apply

Pick the qualification pathway you would like to study, for your chosen subject on our website. During your interview you will be assigned a level dependent on your predicted grades.

### Thinking about next steps?

You can move on to a higher level apprenticeship, university or employment.

### Student bricklayers go green and virtual

SCAN TO  
**READ  
MORE**

**FIND  
OUT  
MORE**

# Building Maintenance

**If you're good with your hands and want to experience different areas of construction and repair, building maintenance is for you.**

You'll get hands-on with a range of construction crafts - including bricklaying, carpentry, plastering and tiling - becoming highly skilled in them all. After your course, you'll be ready to develop a career in estates, facilities or building management. Or, if you discover a talent for a particular trade, progress to further training.

## Employer links include:

- Taylor Wimpey
- E-Act Academy
- Dudley Council
- Bromford Housing

## Aspire to be...

Building Maintenance skills can lead to lots of careers including:

- Bricklayer
- Construction Site Manager
- Multi-skilled Technician
- Joinery
- Heritage/Historic Building Manager
- Plasterer
- Carpenter
- and much more!

## Did you know...

Construction will need **217,000 new workers by 2025** to meet demand.

## You could earn...

- Building Control Officer: £22,000 - £60,000
- Building Surveyor: £25,000 - £70,000

## Choose your pathway

Study Building Maintenance **your** way with one of the following pathways:

VTQ Pathway	Apprenticeships
Pathways into Construction Trades Level 1 Building Maintenance Operative Level 2 Building Maintenance Operative	Roofer Apprenticeship Standard Scaffolder Apprenticeship Standard Property Maintenance Operative Apprenticeship Standard Groundworker Apprenticeship Standard Highways Maintenance Skilled Operative Apprenticeship Standard

## Develop career-ready construction skills

- Learn bricklaying, carpentry, joinery, painting, decorating, boarding, plastering, tiling and sign making
- Understand plumbing and drainage systems
- Use hand tools - such as screwdrivers, power drills, pliers and paper strippers - safely
- Understand different construction methods and materials
- Carry out repairs to walls, doors, frames, skirting boards
- Digital skills in communication and information management
- Working safely and professionally

\* Your exact topics and skills will depend on the course and level you choose.

## How to apply

Pick the qualification pathway you would like to study, for your chosen subject on our website. During your interview you will be assigned a level dependent on your predicted grades.

## Entry Requirements

### VTQ Pathway

**Level 1:** No formal qualifications needed.

**Level 2:** A Level 1 Construction qualification and an appropriate level of English and Maths.

### Apprenticeship

Ideally you will possess grade 4 or above in English and Maths; we can offer support if required. Each employer and Standard will have different entry criteria. Check with our Apprenticeships Team for further information.

## Thinking about next steps?

You can move on to a higher level apprenticeship, university or employment.



John F Hunt Regeneration Ltd host a brownfield site tour at M6 J9/10, set to become new logistics and manufacturing hub, SPARK Walsall.

**FIND OUT MORE**



# Carpentry and Joinery



## Carpentry and joinery combine creativity, patience and practical skills to create furniture, fittings, floors, doors and more.

From making furniture to installing kitchens, if you enjoy working with wood and other materials, this could be the trade for you. You'll study the theory and practice of joinery and carpentry, getting plenty of hands-on instruction from expert professionals. On completion, a world of work awaits - from construction to heritage and the arts.

### Employer links include:

- Liberon
- Nuttall
- Taylor Wimpey
- GreenSquareAccord
- Lovell Homes

## Aspire to be...

Carpentry and joinery skills can lead to lots of careers including:

- Commercial/Construction Carpenter
- Bespoke Wooden Stair Builder
- Sculptor
- Wooden Floor Installer
- Furniture Maker
- Heritage Restorer
- and much more!

## Did you know...

Carpenters are the **largest group** of the building trades workers

## You could earn...

Carpenters  
**£17,000 - £38,000**

## Choose your pathway

Study Carpentry and Joinery **your** way with one of the following pathways:

VTQ Pathway
Level 1 Carpentry and Joinery
Level 2 Site Carpentry
Level 2 Bench Joinery

Apprenticeships
Level 2 Carpentry and Joinery Apprenticeship Standard
Level 2 Furniture Manufacturer Standard
Level 2 Bench Joinery Standard

## Develop practical professional skills

- Maintain and use relevant hand tools and power tools
- Produce woodworking joints
- Carry out first and second fix operations
- Carry out maintenance, non-structural and structural work
- Set up and operate cutting and shaping
- Digital skills in CAD, communication and information management
- Commercial operations like costing and scheduling
- Working safely and professionally

## Entry Requirements

### VTQ Pathway

**Level 1:** No formal qualifications needed.

**Level 2:** A Level 1 Carpentry and Joinery qualification and an appropriate level of English and Maths.

### Apprenticeship

Ideally you will possess grade 4 or above in English and Maths; we can offer support if required. Each employer and Standard will have different entry criteria. Check with our Apprenticeships Team for further information.

## How to apply

Pick the qualification pathway you would like to study, for your chosen subject on our website. During your interview you will be assigned a level dependent on your predicted grades.

## Thinking about next steps?

You can move on to a higher level apprenticeship, university or employment.



*"You pick up so much experience as an apprentice that's 'for real'. You also make plenty of contacts, including your colleagues, sub-contractors and suppliers."*

**Jenni Birchill**  
Level 2 Carpentry and Joinery Apprenticeship Standard

**FIND OUT MORE**



# Electrical Installation



## Does working in electrical technology spark your interest?

Whether it's powering people's homes or working on large-scale energy projects, there are lots of jobs in the sector that will be in demand – in or out of a recession. Our hands-on electrician courses will help you develop the skills to become a qualified electrician. You'll learn in our electrical workshop - built to industry standards - mastering electrical principals and installation techniques.

### Employer links include:

- Certsure LLP
- Denmans Electrical Wholesalers
- NAPIT
- Schneider Electric
- Niglon

## Industry Spotlight

Electrical installation skills can lead to so many careers including:

- Installation Electrician
- Electrical Winder
- Maintenance Electrician
- Electrical Fitter
- Marine Electrician
- Panel Builder
- Telecommunication Operative
- and more!

## You could earn...

Electrician	Approved Electrician	Electrical Engineer
£20,000 - £25,000	£28,000 - £40,000	£60,000+

## Choose your pathway

Study Electrical Installation **your** way with one of the following pathways:

VTQ Pathway	Apprenticeship	T Level
Level 1 Electrical Installation Level 2 Electrical Installation Level 3 Electrical Installation	Installation Electrician/Maintenance Electrician Apprenticeship Standard	T Level in Construction and Building Service Engineering: Electrical Engineering

## Develop in-demand practical skills

- Electrical installations technology
- Installation of wiring systems and enclosures
- Fabrication techniques for electrical installation
- Electrical science and technology
- Health and safety in building services engineering
- The legislation for inspection, testing, commissioning and certification of electrotechnical systems and equipment
- Organising the work environment, maintaining tools and equipment
- Digital skills for research, measuring, recording, and using industry-specific software

## How to apply

Pick the qualification pathway you would like to study, for your chosen subject on our website. During your interview you will be assigned a level dependent on your predicted grades.

## Entry Requirements

### VTQ Pathway

- Level 1:** No formal qualification needed.
- Level 2:** Level 1 Electrical qualification. It is expected that students will have GCSE Maths and English grades 4 or above.
- Level 3:** Completion of the Level 2 in Electrical Installations, along with an interview and good levels of literacy and numeracy is a requirement of entry.

### T Level Pathway

- 5 GCSEs at grade 5 or above including English and Mathematics. It is preferable that applicants will also have a Science GCSE at Grade 5 or above.
- A successful interview with a tutor. A commitment to undertaking a 45-day industry placement following a successful interview with an employer.

### Apprenticeship

- Ideally you will possess grade 4 or above in English and Maths; we can offer support if required. Each employer and Standard will have different entry criteria. Check with our Apprenticeships Team for further information.

Thinking about next steps?

You can move on to a higher level apprenticeship, university or employment.



FIND OUT MORE



# Painting and Decorating



## Painters and decorators are always in demand - from working with construction companies to running your own business.

Under the guidance of industry professionals, you'll learn specialist techniques, such as preparing surfaces, different methods of applying paint, and creating decorative finishes. You'll develop your skills in a lifesize simulated environment - learning everything you need to work safely and professionally - so you can advance your career with confidence.

### Employer links include:

- Bell Group
- Chambers & Hall
- Jonhstone's Paint
- Dulux Paints
- Repair Care International
- AkzoNobel

## Aspire to be...

Painting and decorating skills can lead to lots of careers including:

- Self-employed painter and decorator
- Painter/Decorator for construction company
- Industrial painting and finishing
- Historic Restorations **and much more!**

## Did you know...

The painting and coatings industry contributes to approximately **15% of the United Kingdom's economy** and over 250,000 people are engaged in the supply chain of products.

## You could earn...

Painter/Decorator  
**£17,000 - £32,000**

## Choose your pathway

Study Painting and Decorating **your** way with one of the following pathways:

VTQ Pathway
Level 1 Painting and Decorating
Level 2 Painting and Decorating

Apprenticeship
Painter and Decorator Apprenticeship Standard

## Develop career-ready skills

- Applying paint by brush, roller and HVLP spray equipment
- Applying papers to ceilings and walls, around windows etc
- Preparing surfaces for decorating by filling holes and sealing cracks
- How to select, use, maintain and store paint, tools, wall coverings, equipment etc
- How to produce specialist decorative finishes
- Measuring, estimating and costing jobs
- Working safely and professionally
- Digital skills in communication and information management

## Entry Requirements

### VTQ Pathway

**Level 1:** No formal qualifications needed.

**Level 2:** A Level 1 Painting & Decorating qualification and an appropriate level of English and Maths.

### Apprenticeship

Ideally you will possess grade 4 or above in English and Maths; we can offer support if required. Each employer and Standard will have different entry criteria. Check with our Apprenticeships Team for further information.

## How to apply

Pick the qualification pathway you would like to study, for your chosen subject on our website. During your interview you will be assigned a level dependent on your predicted grades.

## Thinking about next steps?

You can move on to a higher level apprenticeship, university or employment.



Restoration skills explored by painting and decorating students



FIND OUT MORE



# Plastering



**Develop the skills for core construction career by learning to plaster. You'll get hands-on experience in our full-size simulated environment, with different room sets to test your skills.**

Guided by industry experts, you'll master different materials - including solid and fibrous plaster, floor screed and external render. You'll also develop essential knowledge around health and safety, professionalism, pricing and more - so you're ready to work for an employer or yourself.

### Employer links include:

The Wrekin Housing Group

Bromford Housing

GreenSquareAccord

Unicorn

### Aspire to be...

Plastering skills can lead to lots of careers including:

Construction Plasterer

Self-employed Plasterer

Construction Site Supervisor

Maintenance Technician

Heritage Restorer **and much more!**

### Did you know...

Construction will need **217,000 new workers by 2025** to meet demand

### You could earn...

Plasterer  
**£19,000**

Experienced Plasterer  
**£34,000**



### Apprenticeship

Plasterer Apprenticeship Standard

### Develop in-demand practical skills

- Plastering surfaces - including complex walls, ceilings, around windows etc
- Preparing surfaces and work areas
- Mixing, applying and finishing plaster for a professional finish
- Managing, storing, costing and using different materials
- Laying floor screeds and applying external render
- Dry lining materials, methods and finishes
- Digital skills in communication and information management
- Working safely and professionally

### Entry Requirements

Ideally you will possess grade 4 or above in English and Maths; we can offer support if required. Each employer and Standard will have different entry criteria. Check with our Apprenticeships Team for further information.

### Thinking about next steps?

You can move on to a higher level apprenticeship, university or employment.



*"Serving my Apprenticeship at Wrekin has provided me with a great kick-start to my career and an amazing environment for me to learn."*

**Trish Barnes**  
Plasterer Apprenticeship Standard

**FIND OUT MORE**





# Plumbing and Gas



## Plumbers are always in demand, fitting and maintaining water systems, heating systems and gas boilers.

Whether you're just starting out or looking to build on your existing experience, our courses help you progress along this lucrative career path. You'll master essential plumbing techniques in our real-life simulated environment, as well as learn the science and theory of plumbing. Afterwards, you'll be ready for the next stage of professional training.

### Employer links include:

- Wolseley UK
- Alpha Heating
- Adey
- Altecnic
- Ground and Heat Source Association (GSHPA)
- Baxi
- Worcester Bosch
- McAlpine Plumbing Products

## Aspire to be...

There are so many careers in Plumbing and gas including:

- Domestic Plumber
- Heating Engineer
- Commercial Plumber
- Installation & Maintenance
- Renewable Energy and Technologies
- and much more!

## You could earn...

Plumber **£15,000** ..... Experienced Plumber **£40,000**



### VTQ Pathway

Level 1 Certificate in Plumbing  
Level 2 Certificate in Plumbing

### T Level

T Level in Building Service Engineering:  
Plumbing and Heating

## Develop in-demand technical skills

- Installation, repair and maintenance of plumbing systems
- Scientific principles for domestic, industrial and commercial plumbing
- Common plumbing processes
- Domestic gas principles and central heating
- Copper and steel pipework installations
- Jointing and pressure testing systems
- Drainage systems and sanitation
- Cold and hot water systems
- Domestic gas principles and central heating

## Entry Requirements

### VTQ Pathway

**Level 1:** No formal entry qualifications.

**Level 2:** A Level 1 plumbing qualification and a good standard of English and Maths.

### T Level Pathway

5 GCSEs at grade 5 or above including English and Mathematics. It is preferable that applicants will also have a Science GCSE at Grade 5 or above.

A successful interview with a tutor. A commitment to undertaking a 45-day industry placement following a successful interview with an employer.

## Thinking about next steps?

You can move on to a higher level apprenticeship, university or employment.



Mini plumbing industry expo comes to Walsall College



FIND OUT MORE



# Professional Construction



## If you'd like a career managing construction projects, you'll learn everything you need to know with this two-year T Level.

You'll discover how projects are run, from inception to completion, and what's involved every step of the way. You'll get practical experience working in project teams, exploring different roles to see which works for you. You'll also complete 315 hours\* of work experience too - so you're ready for further study or employment.

\*Equivalent to 45 days

### Employer links include:

- Balfour Beatty VINCI
- Bomer & Kirkland
- Volkerfitzpatrick Ltd
- Kier Highways
- Tilbury Douglas
- Winvic

### Aspire to be...

Professional construction skills can lead to lots of careers including:

- Surveying Technician
- Quantity Surveyor
- Engineering Design Technician
- Construction Site Supervisor
- Architectural Technician
- and more!

### Did you know...

Every **1 in 14 people** globally work in the construction or building sector.

### You could earn...

- |                          |                          |
|--------------------------|--------------------------|
| Quantity Surveyor        | Construction Supervisor  |
| <b>£21,000 - £80,000</b> | <b>£30,000 - £55,000</b> |



### T Level

T Level in Construction: Design, Surveying and Planning

### Develop career-ready construction skills

- How construction projects are run
- Methods of building design
- Building information modelling and geospatial surveying techniques
- How digital technology is used within the construction industry
- Scientific principles in construction - material properties, chemical composition etc
- Digital skills including computer aided design, digital measuring tools, BIM software
- Project management
- Commercial aspects of construction

### Entry Requirements

Grade 5 GCSE in Maths and English Language and at least 4 other GCSEs at Grade 4 and above in relevant subjects.

A successful interview with a tutor. A commitment to undertaking a 45-day industry placement following a successful interview with an employer.

### Thinking about next steps?

You can move on to a higher level apprenticeship, university or employment.



*"I applied for this course because I wanted to do something practical and academic. The more I did things like presentations in front of an audience, the more confident I became."*

**Jemma Cotterill**  
T Level in Construction: Design, Surveying and Planning

**FIND OUT MORE**



# Signmaking



**If you're good with your hands, like design and have great attention to detail, it could be a sign about what to study.**

Learn to design, create and install a wide range of signage - from building and roadside signage to vinyl vehicle wraps. You'll get practical experience creating signage using different materials. And learn design software and principles, as well as commercial operations like costing and scheduling projects.

### Employer links include:

- Bowden and Dolphin Signs
- Morelock Signs
- Signgeer
- Viewtec Signs
- Xsign
- Midland Signs & Graphics

### Aspire to be...

Signmaking skills can lead to lots of careers including:

- Graphic Sign Maker
- Graphics Installer
- Roadside Maker and Fitter
- Transport and Vehicle Wrapper
- Neon Glass Bender
- Sign Designer
- and much more!

### Did you know...

83% of businesses use signage to promote their business.

### You could earn...

Signmaker  
**£17,000 - £26,000**



### Apprenticeship

Signage Technician Apprenticeship Standard

### Develop career-ready skills

- Designing, making and installing signage to customer requirements
- Knowledge of the signage industry and British Standards for Signage
- Experience using different signmaking materials - including vinyls, metals, fibreglass and more
- Experience of signmaking machinery, tools and equipment
- Design principles including layout, colour, scale and proportion
- Digital skills in CAD, communication and information management
- Commercial operations like costing and scheduling
- Working safely and professionally

### Entry Requirements

Ideally you will possess grade 4 or above in English and Maths; we can offer support if required. Each employer and Standard will have different entry criteria. Check with our Apprenticeships Team for further information.

### Thinking about next steps?

You can move on to a higher level apprenticeship, university or employment.



*"An Apprenticeship is only as good as you make it. You do have to push yourself. Then the jobs and responsibilities you are given will increase once you start proving yourself."*

**Andy George**  
Level 3 Signage Technician Apprenticeship Standard

**FIND OUT MORE**



# Art & Design



## If you have designs on a creative career, immerse yourself in art, craft and design at Walsall College.

You can study everything from painting, photography and illustration, to digital design, textiles and printmaking. You'll be encouraged to express yourself through your own personal projects and have plenty of time to indulge your passion for different media. You'll learn about professional practice for artists and enjoy trips to galleries and museums for inspiration.

### Employer links include:

The New Art Gallery Walsall | Birmingham Art Gallery

## Aspire to be...

There are so many careers in art and design including:

- Animator
- Fashion Designer
- Fine Artist
- Museum/Gallery Curator
- Product Designer
- Graphic Designer
- Photographer
- and more!

## Did you know...

The creative arts industry employs **2 million people** in the UK.

## You could earn...

Graphic Designer	Art Therapist
<b>£18,000 - £60,000</b>	<b>£33,700 - £47,700</b>

## Choose your pathway

Study Art and Design **your** way with one of the following pathways:

### VTQ Pathway

- Level 2 Art and Design Skills
- Level 3 BTEC Art and Design
- Level 3/4 Foundation Diploma Art and Design

## Develop creative career skills

- Master your chosen media - fine art, photography, sculpture, design, graphics, textiles, printmaking, illustration
- Use ideas to explore, develop and produce art and design
- Build an art and design portfolio
- Work on live briefs
- Use design software such as Photoshop and Illustrator
- Use innovative new technology such as 3D printing

## Entry requirements

**Level 1:** 4 GCSEs at grade 3 - 1 (including a curriculum-related subject). Or a Level 1 related qualification.

**Level 2:** 4 GCSEs at grade 4 or above including English Language and/or Maths are required. Or a Level 2 related qualification.

**Level 3/4:** 1 A Level grade C (or equivalent Level 3 qualification) in a subject and a strong GCSE profile including English GCSE grade 4 or above. AS qualifications are also welcomed. Mature students with alternative qualifications and/or work experience are welcomed.

## How to apply

Pick the qualification pathway you would like to study, for your chosen subject on our website. During your interview you will be assigned a level dependent on your predicted grades.

## Thinking about next steps?

You can move on to a higher level apprenticeship, university or employment.



*"Ideas come to me quickly. I talk about my work confidently in class and when we exhibit our work publicly. I'm a better artist and better student."*

**Natalia Klobowska**  
Level 2 and 3 Art & Design

## FIND OUT MORE



# Photography

## Explore photography as a medium for self-expression and a future career.

Under expert guidance, build on your existing photography skills to produce a portfolio of high-quality images. You'll experience a range of genres - from fashion and advertising, to landscapes and portraiture - working on real briefs from clients. You'll also develop skills for professional practice such as lighting techniques, darkroom skills, and digital post-production.

### Employer links include:

British Institute of Professional Photography (BIPP)

Eileen Mason Photography

## Aspire to be...

Photography skills can lead to careers including:

Fine Art Photographer

Press Photographer Wildlife Photographer

Forensics Photographer and more!

## Did you know...

You'll need a **portfolio** of your work to demonstrate your ability and style. You can develop this through work experience, volunteering, college projects or awards.

## You could earn...

Photographer  
£17,250 -  
£45,000

Press  
Photographer  
£18,000 -  
£60,000



### VTQ Pathway

Level 3 BTEC Extended Diploma in Photography

## Develop creative and technical skills

- Understanding the theory and practice of photography
- Communicating visually
- Developing and executing creative ideas
- Capturing and editing digital images
- Studio and location photography
- Experimental imagery in photography
- Darkroom practice
- Digital skills including Photoshop and post-production
- Photographic media, techniques and technology

## Entry Requirements

4 GCSEs at grade 4 or above including Art, English Language and/or Maths. You will be invited to attend an interview, with a portfolio of images.

## Thinking about next steps?

You can move on to a higher level apprenticeship, university or employment.



Check out last years Creative Festival Pinterest board.



SCAN TO  
READ  
MORE

## FIND OUT MORE



# Creative Media

## Aspire to work in film or TV production? Our courses could give you the competitive edge.

You'll work on a range of creative projects - like producing a short documentary - and complete 40 hours of work experience producing content for real clients. You'll develop practical skills in camera techniques, TV production and production design - and can get even more experience with our in-house student production company, Future Flames Productions.

### Employer links include:

Ductu James Brindley Foundation NHS One Walsall  
Royal Television Society Wolverhampton Racecourse

## Aspire to be...

There are so many careers in creative media including:

Broadcast Journalist Camera Operator  
Film Producer Lighting Technician  
Media Researcher Radio Broadcaster  
Studio Sound Engineer and more!

## You could earn...

Broadcast Journalist	Media Researcher	Studio Sound Engineer
£14,000 - £60,000	£14,000 - £60,000	£17,000 - £40,000



### VTQ Pathway

Level 2 BTEC Diploma in Creative Media Skills  
Level 3 BTEC Extended Diploma in Creative Media Production (TV & Film)

## Develop creative and technical skills

- Fundamentals of creative practice
- Generating and communicating ideas
- TV production and production design
- Producing documentaries, videos and adverts
- Using filming cameras
- Pre-production, production and post-production
- Using 4K video equipment
- Editing footage on top-spec PCs and Macs using industry-standard software
- Film studies

## Entry Requirements

**Level 2:** 4 GCSEs at grade 3-1. Or a Level 1 related qualification.

**Level 3:** 5 GCSEs at grade 4 or above including English Language and Maths. Or a Level 2 related qualification.

## How to apply

Pick the qualification pathway you would like to study, for your chosen subject on our website. During your interview you will be assigned a level dependent on your predicted grades.

Thinking about next steps?

You can move on to a higher level apprenticeship, university or employment.



FIND OUT MORE



# Fashion



## Whether you dream of being a designer, stylist or visual merchandiser, we'll help you channel your passion for fashion.

You'll explore your personal creativity by producing designs and garments using a range of materials and techniques. You'll learn about the fashion industry - as well as fashion promotion and visualisation - and take part in a fashion show or photoshoot. You'll leave with a portfolio of work to show potential employers and universities.

### Employer links include:

Couture Company | Lauren Broxton | Brady Bags

### Aspire to be...

There are so many careers in fashion including:

- Fashion Designer | Stylist
- Jewellery Designer | Textile Designer
- Retail Buyer | Visual Merchandiser
- Fashion Journalist | **and much more!**

### You could earn...

Retail Buyer	Merchandising Manager
<b>£18,000 - £50,000</b>	<b>£16,000 - £36,000</b>



### VTQ Pathway

Level 3 BTEC Extended Diploma in Fashion

### Develop practical and creative skills

- Producing garments and pattern construction
- Using different materials, techniques and processes
- Fashion visualisation and promotion
- Visual recording in art and design
- Professional practice in art and design
- Computing in art and design
- Digital skills in design software
- Materials, techniques and processes

### Entry Requirements

4 GCSEs at grades 4 or above including English Language and/or Maths. Or a Level 2 related qualification.

### Thinking about next steps?

You can move on to a higher level apprenticeship, university or employment.



**FIND OUT MORE**



# Games Art



## The game art industry is a captivating realm that offers a world of boundless creativity and limitless possibilities.

It's a field where imagination comes to life, where breathtaking virtual worlds are born, and where captivating characters spring forth from the depths of the artist's mind. In the games industry, you have the power to shape immersive experiences, blend visual aesthetics with interactive storytelling, and transport players to extraordinary realms. From crafting stunning landscapes to designing intricate characters, the artistry in games holds the potential to captivate, inspire, and entertain millions of people worldwide.

### Aspire to be...

There are so many careers in games art including:

- Pixel Artist
- Technical Artist
- Environment Artist
- Concept Artist
- Animator
- Game Artist
- and much more!**

### You could earn...

Computer Game Developer	Computer Game Tester	Web Designer
<b>£25,000 - £70,000</b>	<b>£24,000 - £50,000</b>	<b>£18,000 - £40,000</b>



### VTQ Pathway

Level 3 BTEC Diploma in Games Art

### Develop practical and creative skills

- Develop your drawing, sculpture, photography, animation and Illustration skills
- Gain insights into how both 2D and 3D software is utilised to create game characters, environments and objects
- Learn about the rich history of gaming and how this links to the history of art & design
- How traditional and contemporary visual culture inspires games design

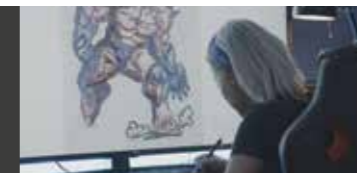
### Entry Requirements

4 GCSEs at grade 4 or above including Art & Design/ Creative Subjects, English Language and/or Maths (or a Level 2 related qualification).

Portfolio-based interview and demonstrate a strong ability in observational drawing.

### Thinking about next steps?

You can move on to a higher level apprenticeship, university or employment.



**FIND OUT MORE**





# Graphic Design



## If you're artistic and love communicating ideas visually, studying graphic design could lead to a lucrative, lifelong career.

You'll study a variety of areas of design - from photography and typography to advertising and animation - under the guidance of expert staff, who are all active practitioners in the industry. You'll enjoy visits to galleries, design studios and agencies for inspiration - and develop a professional quality portfolio to impress future employers.

### Employer links include:

Public Health Walsall | Urban Hax

## Aspire to be...

There are so many careers in graphic design including:

- Graphic Designer | Web Designer
- Branding Consultant | Illustrator/Animator
- Marketing Officer | Exhibition Designer
- Studio Manager | **and much more!**

## You could earn...

Graphic Designer	Illustrator	Furniture Designer
<b>£18,000 - £35,000</b>	<b>£18,000 - £40,000</b>	<b>£20,000 - £38,000</b>



## VTE Pathway

Level 3 BTEC Extended Diploma in Graphic Design

## Develop specialist design skills

- Generating and executing visual concepts
- Photography, illustration and typography
- Packaging, advertising and editorial design
- Corporate identity
- Computer graphics, digital and web design
- 2D animation and 3D computer modelling
- Digital skills in Adobe design software, web design and desktop publishing

## Entry Requirements

4 GCSEs at grades 4 or above including English Language and/or Maths. Or a Level 2 related qualification

## Thinking about next steps?

You can move on to a higher level apprenticeship, university or employment.



"I had creative freedom to make decisions, problem solve and learn along the way. As time went on, my decision making improved, along with confidence in my work."

Faiz Fatima  
Level 3 Graphic Design

## FIND OUT MORE



# Music



## Do you want to be a performer, producer, or work in the music industry? Develop your performance and professional skills with these courses.

You'll receive expert tuition from experienced musicians to perfect your music practice - and have plenty of opportunities to perform as an individual and as part of an ensemble. You'll also learn music production techniques and develop practical skills for a successful career.

### Employer links include:

Lauren Grace Musician

Splinter Studios Resonance

### Aspire to be...

There are so many careers in music including:

Session Musician Artist/Tour Manager

Sound/Recording Engineer

Music Journalist Music Teacher

Music Therapist Music Producer

and much more!

### You could earn...

Music Promotions Manager	Studio Sound Engineer	Live Sound Engineer
<b>£24,000 - £65,000</b>	<b>£17,000 - £40,000</b>	<b>£25,000 - £40,000</b>



### VTQ Pathway

- Level 2 BTEC Diploma in Music Industry Skills
- Level 3 BTEC Extended Diploma in Music

### Develop performance and professional skills

- Music performance and production techniques
- Using different musical styles
- Understanding the music business
- Working and developing as a musical ensemble
- Understanding the sound and music industry
- Music events management
- Songwriting
- Studio recording

### Entry Requirements

**Level 2:** 4 GCSEs grade 3 - 1 (including a curriculum-related subject), or a Level 1 related qualification. Music performance and/or music technology experience, and an audition.

**Level 3:** 4 GCSEs at grade 4 or above including English Language and/or Maths. Or a Level 2 related qualification. Attend an audition.

### How to apply

Pick the qualification pathway you would like to study, for your chosen subject on our website. During your interview you will be assigned a level dependent on your predicted grades.

### Thinking about next steps?

You can move on to a higher level apprenticeship, university or employment.



**FIND OUT MORE**



# Performing Arts

## (Acting and Dance)



**Whether you see yourself dancing on stage or acting on film, studying performing arts can prepare you for a creative career.**

Our courses offer acting and dance pathways, developing your skills through practice and performance at our campus theatre. The Venue. Aspiring actors will learn stagecraft, singing and musical theatre skills and more. Meanwhile, dancers will train in a range of genres, from classical ballet, hip hop and street to contemporary dance.

### Employer links include:

- Birmingham Hippodrome
- The Birmingham Rep
- Birmingham MAC
- New Art Gallery Walsall
- Curtis Stanley

### Aspire to be...

There are so many careers in Performing Arts including:

- Actor/Theatre Performer/Dancer
- Choreographer
- Theatre Manager
- Costume/Prop/Set Designer
- Community Arts Worker
- Cruise Ship/Holiday Camp Entertainer
- Stage Manager
- and more!

### Did you know...

**315,000 people work** in music, performing and visual arts in the UK.



### Performing Arts Acting VTQ Pathway

- Level 2 BTEC Performing Arts
- Level 3 BTEC Performing Arts (Acting)

### Performing Arts Dance VTQ Pathway

- Level 3 Performing Arts (Dance)

### Develop performance and professional skills

- Working in the performing arts industry
  - Performing arts production process
  - Acting skills and techniques
  - Musical theatre performance
  - Devising and performing plays
  - Developing your career as an actor or dancer
  - Developing a professional showreel\*
- \* Level 3 only

### Entry Requirements

#### Acting Pathway

**Level 2:** 4 GCSEs at grades 3 - 1 (including a curriculum-related subject). Or a Level 1 related qualification

**Level 3:** 4 GCSEs at grades 4 or above including English Language and/or Maths. Or a Level 2 related qualification. Attend an audition.

#### Dance Pathway

**Level 2:** 4 GCSEs at grades 3 - 1 (including a curriculum-related subject). Or a Level 1 related qualification

**Level 3:** 4 GCSEs at grades 4 or above including English Language and/or Maths. Or a Level 2 related qualification. Attend an audition.

### How to apply

Pick the qualification pathway you would like to study, for your chosen subject on our website. During your interview you will be assigned a level dependent on your predicted grades.

### Thinking about next steps?

You can move on to a higher level apprenticeship, university or employment.



*"Studying acting at college has helped me achieve even more than I expected. I've grown, matured and learned what it means to not only be an actor, but show as an artist how passionate I am about my work."*

**Tyrelle Scarlett**  
Level 3 Performing Arts (Acting)

**FIND OUT MORE**



# Engineering Machining and Manufacturing



**Whether you're interested in exploring a career as an engineer - or looking to qualify as an engineering machinist - we have lots of courses to get you there.**

You'll study relevant engineering skills under the guidance of our expert tutors - such as mechanical and electrical assembly, and producing and understanding technical drawings. You'll also learn how to work safely and professionally in this diverse and lucrative sector.

### Employer links include:

Stenmar Gauge & Model Co Ltd

Comid Engineering Ltd Winward Engineering Ltd

### Aspire to be

There are so many careers in engineering machining and manufacturing including:

Engineering Operative Machine Setter

Engineering Maintenance Technician

Mechanical Engineering Technician

Toolmaker Welder and much more!

### Did you know...

**18% of the UK** working population work in engineering

### You could earn...

Manufacturing Engineer  
**£23,000 - £60,000**

## Choose your pathway

Study Engineering Machining and Manufacturing **your** way with one of the following pathways:

VTQ Pathway	T Level	Apprenticeships
Level 1 Engineering Machinist Level 2 Engineering Machinist	T Level Engineering in Maintenance, Installation and Repair for Engineering and Manufacturing	Level 2 Engineering Operative Apprenticeship Standard Level 3 Engineering Technician Apprenticeship Standard Level 2 Lean Manufacturing Operative Apprenticeship Standard Level 3 Maintenance & Operations Engineering Technicians Apprenticeship Standard

## Develop in-demand technical skills

- Engineering principles - both mechanical, electrical and electronic
- 3D design and printing
- Machining materials and mechanical assembly
- Hydraulics and pneumatics
- Mathematics for engineering technicians
- Producing engineering drawings
- Carrying out mechanical assembly
- Digital skills including using CAD software, measuring equipment and CNC machines

## How to apply

Pick the qualification pathway you would like to study, for your chosen subject on our website. During your interview you will be assigned a level dependent on your predicted grades.

## Entry Requirements

### VTQ Pathway

**Level 1:** Level 1 in English and Maths. An aptitude for physical tasks is also essential for this course along with good dexterity.

**Level 2:** GCSEs at grade 4 (including English and Maths).

### T Level Pathway

Grade 5 GCSE in Maths, English Language and Science and at least 3 other GCSEs at Grade 4 and above in relevant subjects. A successful interview with a tutor.

A commitment to undertaking a 45-day industry placement following a successful interview with an employer.

### Apprenticeship

Ideally you will possess grade 4 or above in English and Maths; we can offer support if required. Each employer and Standard will have different entry criteria. Check with our Apprenticeships Team for further information.

**Thinking about next steps?**

You can move on to a higher level apprenticeship, university or employment.



**FIND OUT MORE**



# Beauty Therapy

**Do you love pampering people and making them feel great about themselves? Studying beauty therapy could be the start of a gorgeous career!**

Our state-of-the-art beauty salon and training facilities will teach you skills to become a qualified therapist working in a salon, spa, hotel, cosmetic company, or even on cruise liners. You'll get professional masterclasses with industry experts, plus insights into the latest beauty trends and techniques.

### Employer links include:

Hazel Dixon (multi award winning Nail Technician Educator)

Glam Ibiza Rebecca Orme (London Fashion Week)

Hoar Cross Hall/ Steiners Dermalogica

### Aspire to be...

There are so many careers in beauty therapy including:

- Beauty Therapist
- Nail Technician
- Eyelash Technician
- Make-up Artist
- Salon Owner
- Social Media Influencer
- Massage Therapist
- and much more!

### Did you know...

In 2023, the UK beauty industry is currently worth over **£13.4 billion**.

### You could earn...

Beauty Therapist  
**£16,000 - £25,000**



### VTQ Pathway

- Level 1 Diploma in Beauty Therapy
- Level 2 Diploma in Beauty Therapy
- Level 3 Diploma in Beauty Therapy
- Level 3 Diploma in Nail Technology

### Develop salon-ready skills

- Skin care and make-up skills
- Manicures, pedicures and nail art
- Salon reception duties
- Waxing and hair removal
- Eyelash and eyebrow treatments
- Tanning and massage
- Electrotherapy treatments
- Health and Safety
- Sustainability and commercial skills
- Spa treatments

### Entry Requirements

- Level 1:** No formal qualifications required.
- Level 2:** A Level 1 qualification in Beauty Therapy and/or GCSEs at grade 4 or equivalent. Plus English and maths GCSE at grade 4.
- Level 3: Beauty**  
A Level 2 qualification in Beauty Therapy and/or GCSEs at grade 4 or equivalent. Plus English and maths GCSE at grade 4.
- Level 3: Nails**  
Level 2 Diploma in Beauty Therapy/Nail Services. GCSE English and Maths grades 4 or above are desirable.

### Thinking about next steps?

You can move on to a higher level apprenticeship, university or employment.



*"It is true what people say about college being fun and one of the best times in your life."*

**Jo Clarke**  
Level 2 and 3 Beauty Therapy

**FIND OUT MORE**



# Barbering and Hairdressing



## Whatever your current level of barbering or hairdressing skill, we can help you build to the next.

You will learn everything you need to become a highly competent haircare professional - specialising in trimming, cutting, colouring and styling hair - as well as male grooming. You'll learn communication and consultation skills, how to market and sell your services, and professional practice including health and safety.

### Employer links include:

- Francesco Group
- FG Man
- Wella
- KEM Unisex Salon

## Aspire to be...

There are so many careers in barbering and hairdressing including:

- Barber or Hairdresser
- Salon Manager
- Hair Loss Specialist
- Hair Product Marketer
- Stylist for Film and Photography
- and more!

## Did you know...

1 in 50 working people in the UK are employed in the hair and beauty industry.

## You could earn...

Hairdresser	Barber
<b>£14,000 -</b>	<b>£16,000 -</b>
<b>£30,000</b>	<b>£36,000</b>



### VTQ Pathway

Level 1 Hairdressing	Level 1 Barbering
Level 2 Women's Hairdressing	Level 2 Barbering
Level 3 Hairdressing	Level 3 Barbering

## Develop professional skills

- Customer consultation skills
- How to shampoo, condition and treat the hair and scalp
- Cutting, styling and colouring hair
- Trimming facial hair into shape with shaving services
- Hair extensions, bridal hair and other specialisms
- How to promote and sell products/services
- Professionalism and values
- Safe working practices (health and safety)

## Entry requirements

- Level 1:** GCSEs in English and Maths Grade 2 and above.
- Level 2:** Level 1 Hairdressing/Barbering qualification, or prior experience within the industry, plus GCSE English at Grade 4 or above.
- Level 3:** Level 2-related hairdressing qualification or prior experience running a column within the hairdressing industry. 2 GCSEs in English and Maths grades 4 – 9. Practical cut and finish assessment.

## Thinking about next steps?

You can move on to a higher level apprenticeship, university or employment.



"Through college, I took part in and became an industry competition winner; a huge achievement that I know helps me stand out as I turn fully professional."

**Jack Bradshaw**  
Level 2 and 3 Barbering

**FIND OUT MORE**



# Cookery and Catering



**If you love creating meals and cooking food - or enjoy hosting customers and making them happy - our cookery and catering courses are for you.**

Whether you have some experience or are new to the sector, you'll build on your current knowledge and grow into a capable food service professional. From the basics of cookery - to advanced techniques used by top chefs - your skills will soon be sharper than your kitchen knives.

## Employer links include:

- Hundred House Hotel    Quorn Foods
- Fairlawns Hotel and Spa    Dunstall Park
- Walsall Council Town Hall    The Boat Inn
- The Manor House    Henry Tudor House Shrewsbury

## Aspire to be...

Culinary skills can lead to lots of careers including:

- Events Caterer    Recipe Developer
- Chef (executive, private, pastry, sous etc)
- Food Writer    Food Stylist
- and more!

## Did you know...

In Spring 2022 there were 171,000 vacancies available.

## You could earn...

Chef  
**£25,500 - £32,600**



### VTQ Pathway

- Level 1 Certificate in Introduction to Culinary Skills
- Level 2 Technical Certificate in Professional Cookery
- Level 3 Advanced Diploma for Professionals Chef (Kitchen & Larder)

## Develop kitchen-ready culinary skills

- Preparing and cooking food
- Cooking techniques (boiling, poaching, steaming, stewing, braising, baking, roasting, grilling, frying)
- Producing professional quality dishes (vegetarian, meat, poultry, game, fish, shellfish, desserts)
- Serving food and drink and delivering customer service
- Promoting and running a hospitality event
- How to use different knives, tools and equipment
- How to organise yourself as a chef, working safely and hygienically

## Entry requirements

- Level 1:** No formal qualifications are required.
- Level 2:** 4 GCSEs at grades 3-1. A curriculum related qualification.
- Level 3:** 4 GCSEs at grades 3-1, relevant Level 2 qualification and previous industry experience.

## Thinking about next steps?

You can move on to a higher level apprenticeship, university or employment.



*"You don't just learn the kitchen basics, you learn specialist skills so that you can be flexible about where to take your career."*

**Jack Truman**  
Level 2 Certificate in Professional Cookery and Level 3 Advanced Diploma for Professional Chefs

**FIND OUT MORE**



# Hospitality and Events Supervisory



## Hospitality combines customer service, supervisory skills and creativity to give guests an unforgettable experience.

With opportunities to plan a dining experience and hold a personal/corporate event, you'll share your creativity, innovation and high quality service values, all underpinned with involvement from employer clients.

### Employer links include:

Fairlawns Hotel and Spa | Dunstall Park

Walsall Council Town Hall | The Boat Inn

The Manor House | Quorn Foods

### Aspire to be...

There are so many careers in hospitality and events management including:

Accommodation Manager | Event Manager

Conference Banqueting Supervisor

Restaurant, Hotel or Pub Manager

Restaurant and Bar Supervisor

Wedding Planner | and much more!

### Did you know...

Hospitality makes up **6.9%** of all UK employment.

### You could earn...

Events Manager  
**£21,000 - £40,000**

### VTQ Pathway

Level 3 Extended Diploma in Hospitality with Events

### Develop professional skills

- Serving food and drink - including preparing alcoholic drinks, barista skills and more
- Personal professional development
- Human resources in hospitality
- Personal selling and promotional skills
- Organise and planning events
- Marketing for hospitality and events
- Customer service skills

### Entry requirements

**Level 1:** No formal qualifications are required.

**Level 2:** 4 GCSEs at grades 3-1 and a curriculum-related qualification.

**Level 3:** 4 GCSEs at grades 3-1, a relevant Level 2 qualification and previous industry experience.

Thinking about next steps?

You can move on to a higher level apprenticeship, university or employment.



FIND OUT MORE





# Protective Services



## If you want a career protecting your community - or your country - our protective services courses are ideal.

They're for people who want to work for the armed forces, police, fire or prison services. You'll develop essential fitness, teamwork and leadership skills for success in your chosen area. And through our industry links, get to talk to professionals in the sector and discover the skills you'll need to join them.

### Employer links include:

- British Army
- Royal Navy
- Birmingham Airport
- West Midlands Police
- Counter Terrorism Units
- West Midlands Fire Service
- HMS Prisons
- Royal Air Force

## Aspire to be...

There are so many careers in Protective Services including:

- The Armed Forces
- Police Service
- Fire Service
- Prison Service
- Security Sector
- Revenue and Customs
- and more!

## Did you know...

There's a 13% skills shortage in protective services

## You could earn...

- Police Officer: £19,000 - £41,000
- Firefighter: £24,000 - £32,000



### VTQ Pathway

- Level 1 Public Services
- Level 2 Public Services
- Level 3 Uniformed Protective Services

## Develop professional skills

- Essential wellbeing and physical fitness
- Dealing with public service incidents
- Responding to emergency service incidents
- Assisting the public
- Expedition skills (through outdoor and adventurous activities)
- Planning and participating in events
- Aspects of the legal system and current affairs
- Understanding crime and its effects
- Teamwork, leadership and communication
- Behaviour and discipline
- Security work and procedures

## Entry requirements

- Level 1:** No formal entry requirements.
- Level 2:** 4 GCSEs at grade 3 (including a curriculum related subject), or a Level 1 related qualification.
- Level 3:** 4 GCSEs at grade 4 or above including English Language and/or Maths, or a Level 2 related qualification with a final grade of at least a Merit.

## Thinking about next steps?

You can move on to a higher level apprenticeship, university or employment.



"My course was ideal preparation for the Royal Navy in terms of developing leadership and communication skills, plus fitness endurance."

**Elliot Sutton**  
Level 3 Extended Diploma in Protective Services

FIND OUT MORE



# Science



**If you'd like to study science at university - or want a stepping stone to a scientific career - our courses will give you the knowledge and practical skills to succeed.**

Depending on your chosen course, you'll immerse yourself in fascinating topics such as microbiology, organic chemistry and astrophysics. You'll get hands-on in our high-spec labs, learning practical techniques and conducting your own experiments - and explore different career options.

### Employer links include:

Aston University | Birmingham City University

### Aspire to be...

Science skills can lead to fascinating careers in:

- Forensic Science | Industry and Technology
- Environment and Manufacturing
- Biomedical science and genetics | Pharmacy
- Food science and Nutrition | and more!

### Did you know...

Global health and life science is predicted to grow up to 10% per year

### You could earn...

Lab Technician	Climate Scientist
<b>£17,000 -</b>	<b>£15,500 -</b>
<b>£30,000</b>	<b>£55,000</b>

## Choose your pathway

Study Science **your** way with one of the following pathways:

VTQ Pathway
Level 2 BTEC Diploma in Applied Science Level 3 BTEC National Extended Diploma in Applied Science

A Level Pathway
A Level Physics and A Level Chemistry combined with BTEC Level 3 Extended Certificate Applied Science A Level Biology and A Level Chemistry combined with BTEC Level 3 Extended Certificate Applied Science A Level Physics and A Level Maths combined with BTEC Level 3 Extended Certificate Applied Science

## Develop scientific skills and knowledge

- Understanding the fundamentals of science
- Scientific investigation and practical skills
- Maths and statistics for science
- Physiology of the human body
- Organic and inorganic chemistry
- Biochemistry and biochemical techniques
- Scientific techniques in microbiology, medical physics and more
- Digital skills for research, recording data, and communication
- Particles and radiation
- Astrophysics and many more

\*Your exact topics and skills will depend on the course and level you choose. See our website full listing of modules.

## Entry requirements

### VTQ Pathway

**Level 2:** Grade 3 in GCSE Maths and English or a minimum of Level 1 Initial assessment in Maths & English.

**Level 3:** A previous Level 2-related qualification or higher GCSE results may allow direct entry to the BTEC National Foundation Diploma in Applied Science. Ideally 5 GCSEs, grade 4 including Maths, English and a Science qualification.

### A Level Pathway

Level 3: English and Maths at grades 5-9 and a Science GCSE at grades 6-9. Additional GCSE results at grades 5-9 will be an advantage.

## How to apply

Pick the qualification pathway you would like to study, for your chosen subject on our website. During your interview you will be assigned a level dependent on your predicted grades.

### Thinking about next steps?

You can move on to a higher level apprenticeship, university or employment.



**FIND OUT MORE**



# Sport & Fitness

## Indulge your brain AND body with a Sport and Fitness course.

You'll learn about the human body, nutrition, physiology and psychology from industry experts. Plus develop your physical fitness, use our gym, and participate in sports tournaments. You'll visit different sports grounds and get inspiration from sector professionals, thanks to our links with leading sports clubs. Your future career could be in education, the NHS, self-employment, at a sports club or governing body.

### Employer links include:

Walsall Football Club   Aston Villa Football Club  
Inspire   Streetly Tennis Club

## Aspire to be...

There are so many careers in Sport and Fitness including:

- Sports Coach   Sports Centre Manager
- Fitness Instructor / Personal Trainer
- Professional Athlete/Sportsperson
- Sport and Exercise Psychologist
- and more!

## Did you know...

The sport and fitness sector is growing!

## You could earn...

Health Trainer	Sports Physiotherapist
<b>£18,700 -</b>	<b>£24,000 -</b>
<b>£28,500</b>	<b>£45,000</b>



### VTQ Pathway

- Level 1 Diploma in Active Sport and Leisure
- Level 2 in the Foundations of Strength and Conditioning for Sports Fitness/Player Development
- Level 3 Diploma in Personal Training
- Level 3 Extended Diploma in Sport Development
- Level 3 Personal Training: Indoor and Outdoor Environments

## Develop professional skills

- Experience of different sports and exercise activities
- Understanding anatomy, physiology, nutrition, and sports psychology
- Planning fitness programmes and preparing goals
- Promoting health and fitness for wellness
- Sports coaching skills
- Officiating skills including rules and regulations
- Understanding the healthcare systems and exercise referral process
- Skills for self-employment

## Entry requirements

- Level 1:** Entry Level 3 in English and Maths.
- Level 2:** 4 GCSEs grade 3 and above including Maths and English.
- Level 3:** 4 GCSEs at grades 4 or above including English Language and Maths. If you have studied BTEC Level 2 in Sport you must achieve Merit grade or above.

## How to apply

Pick the qualification pathway you would like to study, for your chosen subject on our website. During your interview you will be assigned a level dependent on your predicted grades.

## Thinking about next steps?

You can move on to a higher level apprenticeship, university or employment.



Students succeed as sports day hosts



FIND OUT MORE



# Supported Learning



**FIND OUT MORE**

**At Walsall College, we passionately believe that education should be available for everyone who can benefit from it.**

Our programmes lead towards progression on to cross college courses, independent living or a Supported Internship.

## Employer links include:

- Association of Colleges
- Birmingham FA
- Walsall Leather Museum
- MLSS Gym
- The Co-operative
- Ninja Warrior UK
- Dunelm

## Supported Learning Pathways

### Preparation for Adulthood

- Entry Level 1 Life Skills
- Entry Level 2 Skills for Independence

### Employability

- Entry Level 2 Skills for Progression
- Entry Level 3 Skills for Employment
- Supported Internship

### Vocational

- Level 1 Art & Design
- Level 1 Performing Arts
- Level 1 Media
- Level 1 Sport Academy
- Entry Level 3/Level 1 Catering

## Preparation for Adulthood Pathway

### Entry Level 1 Life Skills

**Duration:** 1 year  
**Location:** Wisemore Campus or Hawbush Campus  
**Entry Requirements:** This course is suitable for students aged 16-25 who have an Education Health and Care Plan. While you will not need any formal qualifications, you will need to attend an assessment and interview with our Supported Learning tutors.

**Ideal for:** This programme is ideal for SEND students with complex to moderate LDD. The course aims to improve students' 'life skills'.

The aim of the course is to help students develop a range of life skills and become more independent at home and at college.

A possible 3 years on the course, students will work towards an Entry Level 1 qualification.

**You'll learn:** skills which are needed in daily life such as basic food preparation, personal safety and communication skills.

**Expect:** to learn in a variety of settings including the local community.

**You'll love:** the practical activities which will support you to improve a wide range of skills

**What's next?** You may be able to progress to higher level courses within Supported Learning, other progression routes include social care provision.

### Entry Level 2 Skills for Independence

**Duration:** 1 year  
**Location:** Wisemore Campus or Hawbush Campus  
**Entry Requirements:** This course is suitable for students aged 16-25 who have an Education Health and Care Plan. While you will not need any formal qualifications, you will need to attend an assessment and interview with our Supported Learning tutors.

Students aged 16-18 who do not have an EHCP but require this course to improve specific skills or students aged 19+ who do not have an EHCP may be suitable but will be assessed on an individual basis.

**Ideal for:** students who want to improve their ability to live more independently by developing independence skills, including accessing different campuses at Walsall College.

**You'll learn:** about shopping and basic food preparation, personal safety, community participation and safety in the home.

**Expect:** individual and group activities, real life scenarios and practical, written and verbal assessments.

**You'll love:** the opportunity to develop independent living skills in a community based venue.

**What's next?** There may be possible progression options to higher level courses within Supported Learning, based on your interests/skills.

Other routes include social services provision, voluntary and/or paid employment.

## Support we offer:

- Support from highly skilled learning mentors
- One-to-one and small group support
- Support in class and lunch/break times
- Transport meet and greet
- Specialist dyslexia support
- Specialist Language Support
- Educational Interpreters and Notetakers

- Support for personal care needs
- Pastoral Support (behaviour and welfare support).

# Supported Learning

## Employability Pathway

### Skills for Progression Entry Level 2

**Duration:** Up to 2 years

**Location:** Wisemore Campus or Hawbush Campus

**Entry Requirements:** You will not need any formal qualifications. You will need to attend an assessment and interview with Supported Learning tutors.

**Ideal for:** This course is designed to help students with learning difficulties and/or disabilities progress from a school to college environment, improving skills in English, Maths, digital skills, promoting good health and wellbeing and personal development. It allows for different vocational areas to be experienced, helping students to choose their future employment or college progression.

**You'll learn:** practical skills in a range of subjects such as catering, care, motor vehicle, art and design, performing arts, media, sports and gardening.

**Expect:** to study Functional Skills in Maths, English and ICT as part of this course.

**You'll love:** the support you'll get from tutors and the chance to meet new people and make friends.

**What's next?** Progress onto higher level courses within Supported Learning/cross college, based on your interests and skills. Other routes include social services provision, voluntary and/or paid employment.

## Employability Pathway

### Skills for Employment Entry Level 3

**Duration:** 1 year

**Location:** Wisemore Campus

**Entry Requirements:** You won't need any formal qualifications however you should be working at Entry Level 2 to Entry Level 3, and be able to independently access a work placement with minimal support. Suitability to the course will be assessed by a course tutor.

**Ideal for:** Students who want to gain the foundation skills required in the workplace to help you get a job.

**You'll learn:** about dealing with problems in daily life, preparing for work and exploring job opportunities available to you.

**Expect:** to study Functional Skills in English, Maths and ICT with exam based assessments.

**You'll love:** the chance to gain real life work experience with a local employer.

**What's next?** Supported Internship, a cross college vocational course, paid or voluntary employment.

## Employability Pathway

### Supported Internship

**Duration:** 1 year

**Location:** Wisemore Campus

**Entry Requirements:** You won't need any formal qualifications however you should be working at Entry Level 3 to Level 1, and be able to independently access a work placement with minimal support. Suitability to the course will be assessed by a course tutor.

**Ideal for:** 16 to 24-year-olds with SEND, who have an education, health and care (EHC) plan. The core aim of a Supported Internship study programme is a substantial work placement, facilitated by the support of an expert job coach. This course is all about getting students work ready, building on their vocational skills and improving their employability skills and confidence. It's also ideal for students with SEND who, with the right level of guidance and support, are ready and prepared to learn skills to make the step into employment.

**You'll learn:** skills which will help you to gain and maintain employment, whilst also learning on the job skills through your Internship placement.

**Expect:** to develop your employability skills during an internship with a local employer and study English and Maths.

**You'll love:** the support you'll get from tutors during your placement to help you get the most out of your experience.

**What's next?** Progress on to an Apprenticeship or employment based on your interests and skills. Or progress back on to a College course.

## Vocational Pathway

### Level 1 in Art & Design

**Duration:** 1 year

**Location:** Wisemore Campus

**Entry Requirements:** You will not need any formal qualifications. You will need to attend an assessment and interview with Supported Learning tutors.

**Ideal for:** Those who want to develop your creativity by exploring a variety of art and design techniques and gain more confidence in applying these skills.

**You'll learn:** different art and design methods including painting and drawing, 3D design, photography, computer generated graphics, textiles and printmaking.

**Expect:** to work on personal projects and build up your own portfolio of artwork.

**You'll love:** field trips to local art galleries and museums.

**What's next?** Level 2 cross college courses, Supported Internship, Apprenticeship, employment.

# Supported Learning

## Vocational Pathway

### Level 1 Performing Arts

**Duration:** 1 year  
**Location:** Wisemore Campus  
**Entry Requirements:** You will not need any formal qualifications. You will need to attend an assessment and interview with Supported Learning tutors.

**Ideal for:** Students who want to develop your confidence and communication skills by exploring a variety of different performing arts techniques.

**You'll learn:** a range of practical performance skills including acting, dancing and music, as well as social skills and health and safety knowledge.

**Expect:** individual and group activities, real life scenarios and practical, written and verbal assessments.

**You'll love:** performing on stage during various productions.

**What's next?** Level 2 cross college courses, Supported Internship, Apprenticeship, employment.

## Vocational Pathway

### Level 1 Media

**Duration:** 1 year  
**Location:** Wisemore Campus  
**Entry Requirements:** You will not need any formal qualifications. You will need to attend an assessment and interview with Supported Learning tutors.

**Ideal for:** Students who have a keen interest in video and audio production and want to improve your media skills within a supported learning environment.

**You'll learn:** about the media industry and aspects of video and audio production, including film making.

**Expect:** to work on a variety of projects which will allow you to explore different media techniques.

**You'll love:** working on live projects which will allow you to improve your media skills.

**What's next?** Level 2 cross college courses, Supported Internship, Apprenticeship, employment.

## Vocational Pathway

### Level 1 Sport Academy

**Duration:** 1 year  
**Location:** Wisemore Campus  
**Entry Requirements:** You will not need any formal qualifications. You will need to attend an assessment and interview with Supported Learning tutors.

**Ideal for:** Students who have a keen interest in sports, and if you have a learning difficulty or need to improve your English and Maths skills to support you to progress.

**You'll learn:** the skills to participate and coach a wide range of sports through practical and theory sessions.

**Expect:** opportunities to compete regionally in a range of sports. You can expect to be part of the SLDD Football Team who compete on a regional and national level.

**You'll love:** the range of practical sports activities available to students.

**What's next?** Level 2 cross college courses, Supported Internship, Apprenticeship, employment.

## Vocational Pathway

### Level 1 Catering

**Duration:** 1 year  
**Location:** Wisemore Campus  
**Entry Requirements:** You will not need any formal qualifications. You will need to attend an assessment and interview with Supported Learning tutors.

**Ideal for:** Students who have an interest in cooking and want to learn the skills you need to work in the hospitality and catering sector.

**You'll learn:** about a range of practical food preparation and production skills and food hygiene.

**Expect:** to study Functional Skills in Maths, English and ICT as part of this course.

**You'll love:** working in industry standard kitchens and opportunities for work experience in a range of settings.

**What's next?** Level 2 cross college courses, Supported Internship, Apprenticeship, employment.

**We offer English for Speakers of Other Languages (ESOL) for 16-19 year olds.**

## ESOL (16-19)

### English for Speakers of other Languages

**Duration:** 1 year  
**Location:** Wisemore Campus  
**Entry Requirements:** No formal qualifications are required.

**Ideal for:** Students if English is your second language.

**You'll learn:** how to communicate effectively in the English Language.

**Expect:** the opportunity to develop your reading, writing and speaking and listening skills, alongside planning for your chosen career goals and the steps required to reach that goal

**You'll love:** the opportunity to develop independent English skills which will support you in gaining access to the vocational programme of your choice.

**What's next?** Level 2 cross college courses, Supported Internship, Apprenticeship, employment.

# What people say about us



"Thanks to the support of the tutors over the entire six years, I am more confident within myself as a person as well as my chosen career path. Thank you Walsall College."

**Tommie**



"I have studied my HNC and now studying for my HND Level 5. This has proved excellent. The tutors have been brilliant and supportive."

**Claudia**



"I appreciate the help, support and guidance that I received, I hope the College know that I am thankful for everything they have done for me. I learned a lot and gained great grades."

**Shanice**



"I am so happy that I chose to go to college, especially Walsall College, life at Walsall College is helping me to figure out the right career path that I should take."

**Chloe**



"My experience has been the best, I have gained new skills from attending work placement and have enjoyed it very much. Staff and students are all polite and treat each other with respect. I have made many friends that will stick by me and hopefully be by my side for life."

**Sophie**



"Such a pleasant experience, the staff were professional and really helpful throughout the process. I recommend the institution to anyone looking to progress in their career or better their lives."

**Bianca**

## Disclaimer

Our prospectus and college documents are simply here to offer a guide. We accept no liability for any inaccurate statements and are not responsible for any negative outcomes if you rely on an inaccurate statement. When you sign forms and accept a place at the College, you agree to abide by College rules and any changes made to them, and accept that we have the right to reject applicants. You also accept that there are certain circumstances that could prevent us from providing some services or programmes. These are: low class numbers; severe weather conditions; severe damage to buildings; circumstances which may affect the health and safety of staff and/or students, or any other relevant circumstances outside the reasonable control of the College. In these cases, we reserve the right to withdraw any programmes or service. If we close the course within four weeks of the start date, we will give you a full refund.

## Privacy Notice

Walsall College collects and processes personal data relating to potential learners to manage effectively, the administration of their education and to meet its statutory obligations as part of the College's public task. Walsall College is committed to being transparent about the data it collects and uses that data lawfully in line with its data protection obligation. For our full privacy notice, please see the Walsall College website.

Your personal information may be shared with third parties for education, training, employment and well-being purposes, including for research. This will only take place where the law allows it and the sharing is in compliance with data protection legislation. For further information on which organisations we regularly share personal data with, please read our full privacy notice on the Walsall College website.

## Sustainability

This publication has been produced using carbon balanced material. All paper used was a mix of materials from Forestry Stewardship Council certified forests.

# USEFUL CONTACTS

## Course advice

Our impartial Information, Advice & Guidance Team are here to discuss the best options available to you. Contact our Student Services team to discuss your options on **01922 657000**.

## Financial advice

- To find out what financial help may be available to you, talk to our Information, Advice & Guidance Team on: **01922 657000**
- Find out more at: [www.studentfinancedirect.co.uk](http://www.studentfinancedirect.co.uk)

## Stay safe

- If you're worried for yourself or someone else, contact us at: [safeguardingteam@walsallcollege.ac.uk](mailto:safeguardingteam@walsallcollege.ac.uk)

## Students with disabilities

- Apply for Disabled Students Allowance (DSA) at: [www.gov.uk/disabled-students-allowances-dsas/overview](http://www.gov.uk/disabled-students-allowances-dsas/overview)
- Talk in confidence to our Inclusive Support Team on **01922 657093** or **01922 688536**
- For interpreting support for deaf students, contact **01922 657000**.

## Students' Union

- Find out more at: [www.walsallcollege.ac.uk](http://www.walsallcollege.ac.uk) or email [studentsunion@walsallcollege.ac.uk](mailto:studentsunion@walsallcollege.ac.uk)







## Apprenticeships

- Find out more at: [www.walsallcollege.ac.uk/apprenticeships](http://www.walsallcollege.ac.uk/apprenticeships) or call **01922 651129**

# Get social with us...

Stay in touch and keep up-to-date with all our latest news, events and student success stories. You can do this by joining us on social media. Follow us on our socials to check out what life at Walsall College is like.

## Find us at:

 Walsall\_College    @Walsall\_College    @walsallcollege  
 /walsallcollege    Walsall College    Search Walsall College

If you need help accessing this prospectus or would like it in another format e.g. braille, widget or audio, please contact us on **01922 688536**.  
Deaf Users Minicom: **01922 657064**.

# Open Days

Wednesday 11th October 2023 • 4pm - 8pm

Thursday 16th November 2023 • 4pm - 8pm

Saturday 13th January 2023 • 10am - 2pm

Wednesday 20th March 2023 • 4pm - 7pm

Thursday 20th June 2023 • 4pm - 7pm

Bringing talent to life...



 01922 657000

 [www.walsallcollege.ac.uk](http://www.walsallcollege.ac.uk)

If you need help accessing this prospectus or would like it in another format e.g. braille, widget or audio, please contact us on 01922 688536.

