



**BUSINESS  
TRAINING SOLUTIONS**



The Employer Responsive Division of Walsall College



## TRAINING AND RECRUITMENT

### Right People, Right Attributes

Having a workforce with the right qualifications helps, but we all know that employers need something more from individuals if they are going to have a real impact on business stability and growth.

Whether they are full-time students, work-based/distance learners or apprentices - Walsall College Graduates are encouraged to be skilled, professional and enterprising.

This way, when they are in the workplace they are in a great position to make a more valuable contribution to the business objectives of their employer.

Whatever your skills needs, and the size and nature of your company, the training programmes and services we offer aim to futureproof your business.

## At a glance...

- A free recruitment and selection service
- Apprenticeships/T Levels
- Work-based, professional and higher level courses
- Tailored and bespoke training
- Specialist short courses
- Pre-recruitment training packages
- An undergraduate industry placement service
- An Apprenticeship-Levy advice service
- Industry forums
- Industry-based employer boards
- Meeting, conference and events space

Our team of experts can ensure you get the very best out of the training opportunities available.

## Some of the employers we work with:



# The Apprenticeship Way

**Tailored, flexible and personalised - Apprenticeships have fast become the most effective way of recruiting and retaining staff.**

Give your workers the chance to gain job-specific skills through a combination of workplace and offsite training. Qualifications are available from level two through to degree-level, so there's something for everyone to study.

## Hiring an apprentice

With over 1,500 apprentices training with us, we are one of the West Midlands' biggest providers of apprenticeships.

From the moment you decide you want to recruit an apprentice, to the completion of their training programme, we are with you every step of the way, providing:

- advice on the right apprenticeship framework or standard for your industry or business needs
- identifying funding sources based on the apprentice, the programme and size of your business
- advertising your vacancy(s), screening candidates and recruiting the best individual(s) for the job
- easy online tracking using our award winning digital platform Smart Assessor

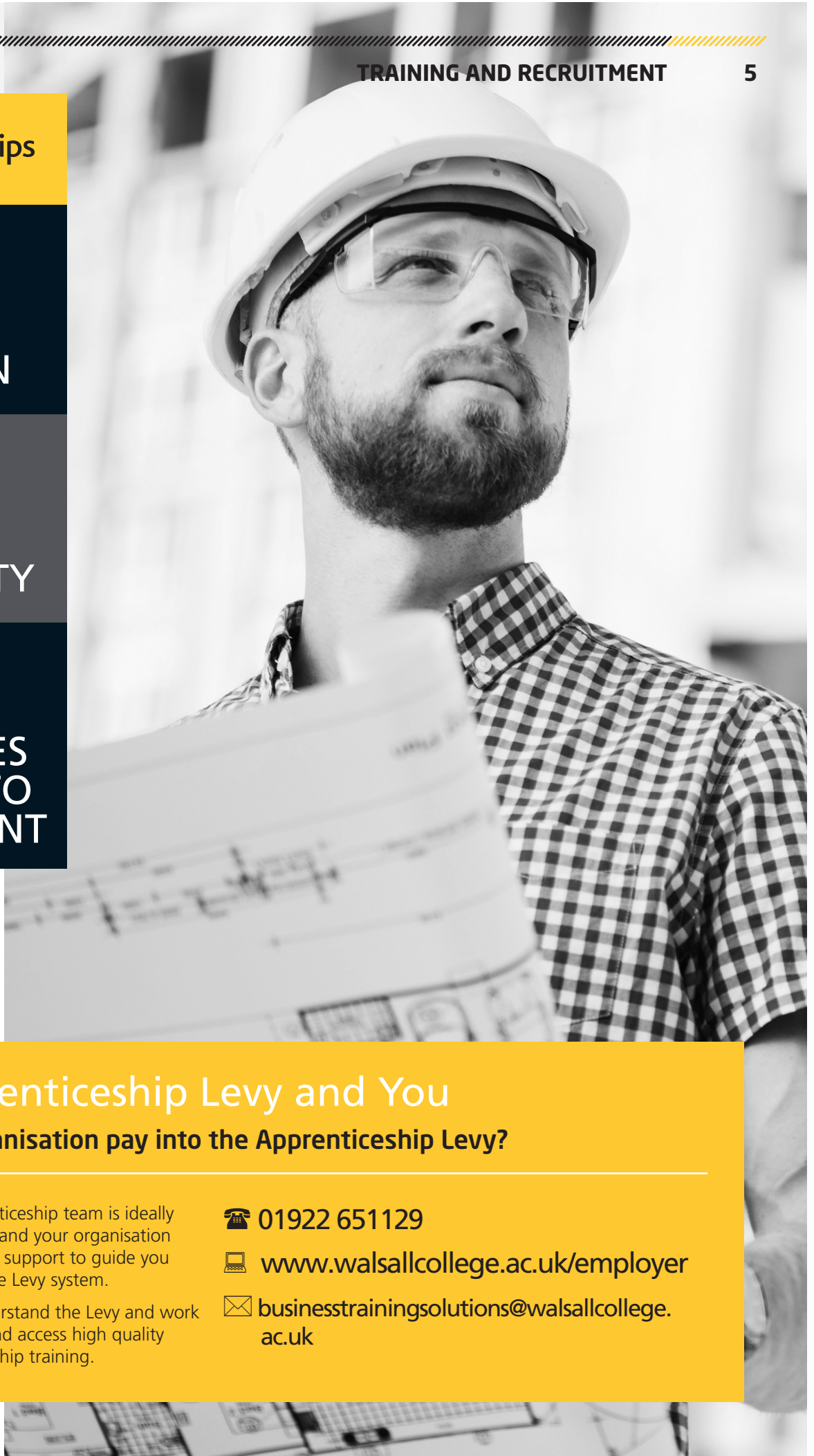
	LOCATION	LEVELS				
		2	3	4	5	6
Accounts/Finance	National	•	•	•		
Adult/Healthcare Support Worker	West Mids & South Staffs	•	•	•	•	
Automotive (Maintenance and Repair)	West Mids & South Staffs	•	•			
Bricklayer	West Mids & South Staffs	•				
Business Administrator	National		•			
Carpentry & Joinery	West Mids & South Staffs	•				
Chartered Manager Degree	West Mids & South Staffs					•
Customer Service	West Mids & South Staffs	•	•			
Dental Nurse	West Mids & South Staffs		•			
Digital Marketer	National		•			
Electrical Installation/Maintenance	West Mids & South Staffs		•			
Engineering (Manufacturing)	West Mids & South Staffs	•	•			
Groundworker	West Mids & South Staffs	•				
Highways Maintenance	West Mids & South Staffs	•				
Learning Mentor	West Mids & South Staffs		•			
Learning and Skills Teacher	West Mids & South Staffs				•	
Painter and Decorator	West Mids & South Staffs	•				
Payroll	National		•			
Pharmacy Assistant/Technician	West Mids & South Staffs	•	•			
Plasterer	West Mids & South Staffs	•				
Plumbing and Domestic Heating	West Mids & South Staffs		•			
Property Maintenance Operative	West Mids & South Staffs	•				
Roofer	West Mids & South Staffs	•				
Scaffolder	West Mids & South Staffs	•				
Signage Technician	National		•			
Team Leading/Department or Operations Management/Supervisor	National				•	
Teaching Assistant	West Mids & South Staffs		•			



**80%**  
STAFF  
RETENTION

**72%**  
IMPROVED  
PRODUCTIVITY

**57%**  
APPRENTICES  
PROGRESS TO  
MANAGEMENT



## The Apprenticeship Levy and You

**Does your organisation pay into the Apprenticeship Levy?**

Our dedicated Apprenticeship team is ideally placed to provide you and your organisation with the expertise and support to guide you effortlessly through the Levy system.

We can help you understand the Levy and work with you to identify and access high quality accredited apprenticeship training.

 **01922 651129**

 **[www.walsallcollege.ac.uk/employer](http://www.walsallcollege.ac.uk/employer)**

 **[businesstrainingsolutions@walsallcollege.ac.uk](mailto:businesstrainingsolutions@walsallcollege.ac.uk)**

## Professional qualifications/ Higher Education courses

Whether it's expertise in Microsoft Office or qualifications from industry bodies, digital specialist skills and chartered professional status are one way for employees to achieve a competitive edge. Our portfolio of Access to Higher Education courses, Higher Level Apprenticeships, university-level and Level 5-6 professional diplomas mean that pathways are open to anyone aiming for a full honours degree or an industry-recognised qualification.

Areas of study include:

- Administration Customer Care, Law and Retail
- Art & Design, Graphic Design, Photography and Fashion
- Automotive
- Business Finance and Enterprise
- Computing & ICT
- Construction & The Built Environment
- Early Years, Health & Social Care
- Hospitality
- Leadership and Management
- Media
- Sport
- Teacher Training



**CIPD**

**Microsoft®**



## Financial Support

There is a range of support packages available to help employees towards the cost of their training.

Advanced Learner Loan - Available to those enrolling on an eligible course at Level 3 or above.

(If you are aged 19 - 23 and do not already have a full Level 3 qualification, you will be entitled to receive free tuition and do not need to apply for an Advanced Learner Loan. If you are aged 19 - 23 and already have a full Level 3 qualification, you can apply for an Advanced Learner Loan.)

**Advanced Learner Loan**

## Bursaries

Higher Education Loans and Bursary - Available through Student Finance England.

Our Student Finance Team can provide further information.

**01922 657000**

**[www.walsallcollege.ac.uk](http://www.walsallcollege.ac.uk)**

**[admissionsandfinance@walsallcollege.ac.uk](mailto:admissionsandfinance@walsallcollege.ac.uk)**

## Distance Learning/ e-learning courses

We know how important it is for professionals to understand industry practices and keep up to date with legislation and government policies.

Our distance learning courses help you do this. And with learners able to study in their own time - either from home or at work - these pathways make it easy for you to stay informed and enhance your knowledge. For a limited time, many of the courses below are free\*.

\*subject to eligibility

Distance learning courses include:

- Level 2 Certificate in Understanding Adverse Childhood Experiences
- Level 2 Certificate in the Principles of Business Administration
- Level 2 Certificate in Understanding Business Improvement Techniques
- Level 2 Certificate in Understanding Common Childhood Illnesses
- Level 2 Certificate in Counselling Skills
- Level 2 Certificate in Caring for the Elderly
- Level 2 Certificate in Common Health Conditions
- Level 2 Certificate in Understanding the Care & Management of Diabetes
- Level 2 Certificate in Children and Young Peoples Mental Health
- Level 2 Certificate in the Principles of Care Planning
- Level 2 Certificate in Principles of Customer Service
- Level 2 Certificate in Introducing Caring for Children and Young People
- Level 2 Certificate in The Dignity and Safeguarding In Adult Social Care
- Level 2 Certificate in Understanding Data Protection and Data Security
- Level 2 Certificate in Equality and Diversity
- Level 2 Certificate in Certificate in Understanding the Principles of End of Life Care
- Level 2 Certificate in Falls Prevention Awareness
- Level 2 Certificate in Mental First Aid and Mental Health Advocacy in the Workplace
- Level 2 Certificate in Awareness of Mental Health Problems
- Level 2 Certificate in Understanding Nutrition and Health
- Level 2 Certificate in the Principles of the Prevention & Control of Infection in Health Conditions
- Level 2 Certificate in Principles of Dementia Care
- Level 2 Certificate in Self-harm and Suicide Awareness and Prevention
- Level 2 Certificate in Special Educational Needs and Disability
- Level 2 Certificate in Understanding the Safe Handling of Medication in Health and Social
- Level 2 Certificate in Understanding Specific Learning Difficulties
- Level 2 Certificate in Understanding Technology Enabled Care
- Level 2 Certificate in the Principles of Team Leading
- Level 2 Certificate in Understanding Autism
- Level 2 Certificate in Understanding Behaviour that challenges
- Level 2 Certificate in Understanding Cancer Support
- Level 3 Certificate in Understanding Autism
- Level 3 Certificate in Understanding the Principles of Dementia Care
- Level 3 Certificate in End of Life Care
- Level 3 Certificate in Understanding Mental Health

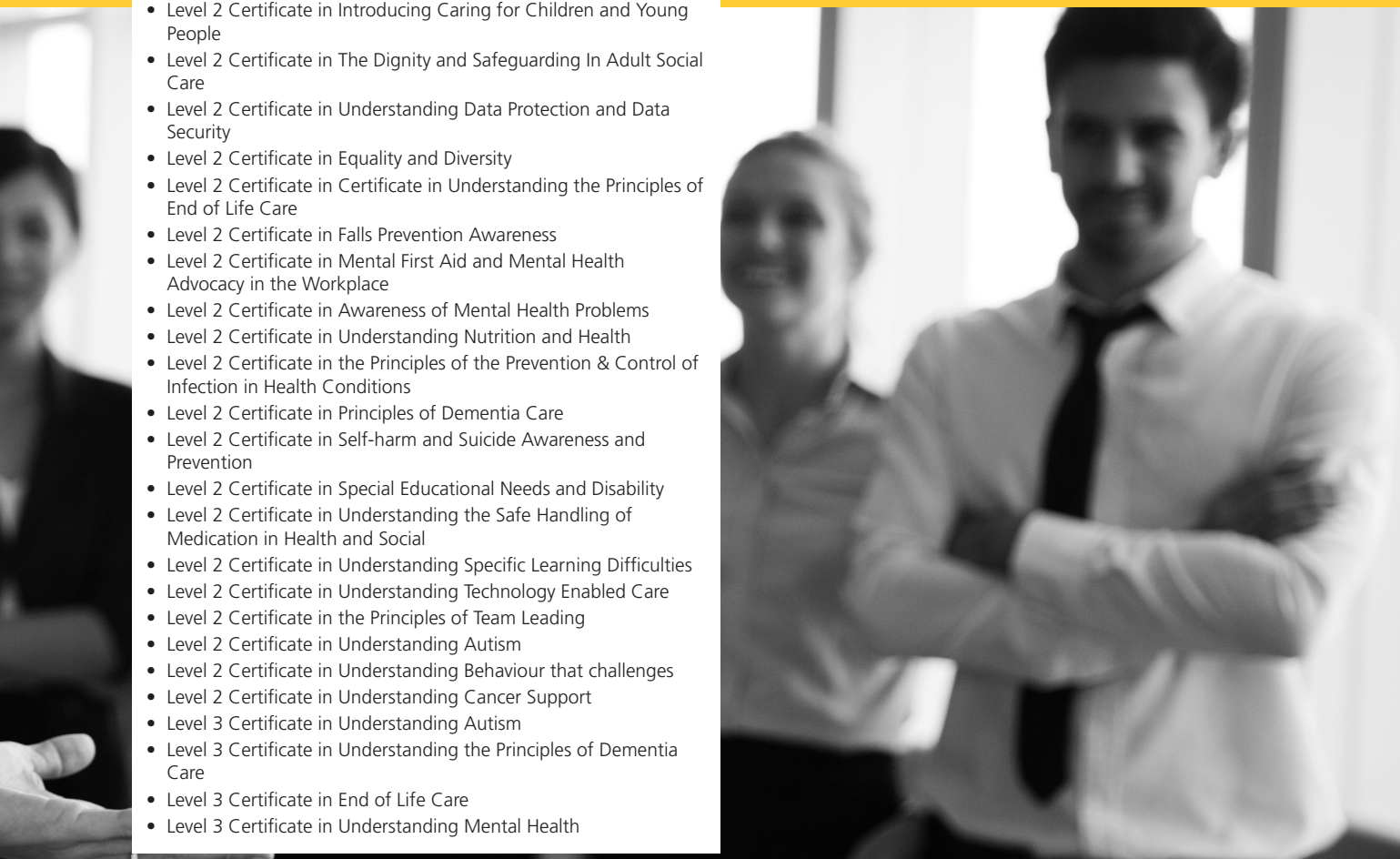
## Flexible learning

We appreciate there are growing demands on employee's time, which is why we've developed adaptable learning solutions suited to the needs of employers. Our partnership with award-winning course provider, Kaplan offers employees flexible online teaching combined with independent learning-that is accessible at any time from any digital device-delivers the ideal balance between supporting employees and ensuring minimal disruption to employers.

Experienced tutors are on hand to provide guidance and encourage discussion, with online lessons containing comprehensive video lectures and exercises to further enhance learning without compromising on work or personal commitments. Our flexible learning courses include:

- AAT Level 2 Foundation Certificate in Accounting
- AAT Level 2 Accounts and Finance Assistant Apprenticeship
- AAT Level 3 Assistant Accountant Apprenticeship
- AAT Level 3 Diploma in Accounting
- AAT Level 4 Professional Diploma in Accounting
- AAT Professional Accounting or Taxation Technician Apprenticeship

aat



## Support filling job vacancies

**If you have an immediate vacancy to fill and struggle to find the time to advertise roles, source candidates and train recruits then let us do the work for you.**

Our industry gateway programmes bring jobseekers together, developing their skills so they are better placed to fill in demand roles quickly. Free, customisable four-week programmes are available in sectors including construction, enabling employers to diversify their workforce and provide consistent high quality training.

## Do you have a language issue in your workforce?

**Employers can access free courses to improve the communication skills for staff whom English is not a first language.**

Training can be provided at company premises for a minimum of 33 weeks. It can also be adapted to fit in with your organisation's operational needs and the language abilities of your employees.

Call **01922 688533** to find out more.

## English and maths in the workplace

**Supporting you to develop the skills of your workforce is what we do. A key part of this is supporting your staff to develop their maths and English skills.**

We offer fully funded\* functional skills English and Maths qualifications at times that suit you and your staff so that learning fits around their work and home life. We are able to create bespoke groups or your staff can join one of the classes we already have in place.

\* subject to meeting eligibility criteria

## Supporting the wider community

Placements aren't the only way your business can give something back, could you:

- Host a site visit
- Sponsor a student award or facility
- Join an industry board
- Participate in our industry forums
- Masterclass talk

 **01922 651129**

 [businesstrainingsolutions@walsallcollege.ac.uk](mailto:businesstrainingsolutions@walsallcollege.ac.uk)



# T-LEVELS - create the workforce of the future

THE NEXT LEVEL QUALIFICATION

A force of bright, motivated students are here to help strengthen your organisation.

As one of the first UK colleges who launched T Levels in 2020, we are inviting employers looking to inspire the next generation, to provide an industry placement. We're already working successfully with construction giant Balfour Beatty VINCI.

Industry placements are already helping employers go further forward, faster.

- Help nurture and develop talent for the future of your industry
- Increase the capacity of your business
- Extra resource for projects
- A more diverse workforce, bringing imaginative ideas and different skills

You'll receive support with planning at every stage of the process from your team at Walsall College.

Industry placements of around 315 hours are an integral part of T Levels, a new 2-year qualification, equivalent to 3 A Levels, that brings classroom and work together.

T Levels have been designed in collaboration with the best businesses and organisations to equip students with the skills and knowledge your business needs.

Take your business to the next level with industry placements and T Levels with Walsall College.

We offer T Levels in

- Digital Production, Design and Development
- Digital Support Services
- Construction: Design, Surveying and Planning
- Construction and Building Service Engineering (Electrical Installation Specialism)
- Education and Childcare
- Health

## Can you offer a placement?

☎ 01922 651129

💻 [www.walsallcollege.ac.uk/tlevels](http://www.walsallcollege.ac.uk/tlevels)

✉ [businesstrainingsolutions@walsallcollege.ac.uk](mailto:businesstrainingsolutions@walsallcollege.ac.uk)

Employers we have worked with include:



## Facilities and Corporate Offers

Take advantage of our world-class facilities, conferencing centre, sports hall and also get corporate membership from our gym and Walsall's best restaurant 'The Littleton'.



Hire The Hub for weddings and large scale events



Hire our conference rooms

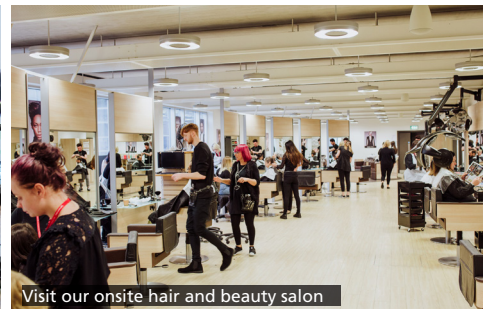
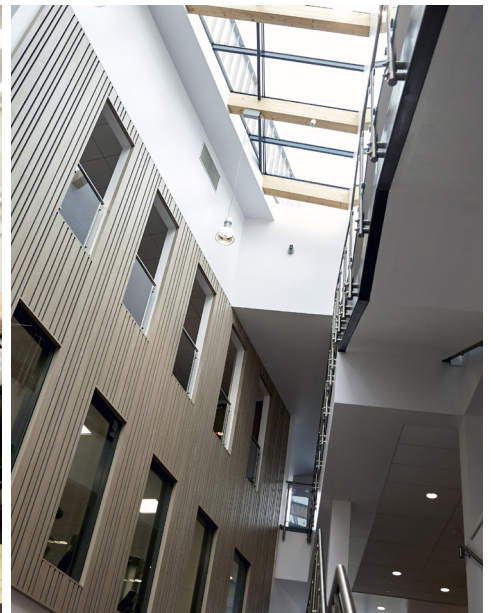
For more information contact us:

☎ 01922 651129

💻 [www.walsallcollege.ac.uk/employer](http://www.walsallcollege.ac.uk/employer)

✉ [businesstrainingsolutions@walsallcollege.ac.uk](mailto:businesstrainingsolutions@walsallcollege.ac.uk)





"Walsall College is uniquely and proudly vocational, delivering technical, professional and community education. Our greatest passion is unleashing the potential of individuals, communities and businesses; our greatest legacy is the talent of our students: *skilled, professional and enterprising.*"



 01922 657000  [www.walsallcollege.ac.uk](http://www.walsallcollege.ac.uk)  [info@walsallcollege.ac.uk](mailto:info@walsallcollege.ac.uk)